

# Configuration Guide of Veilux IP Camera & Veilux Video Server Products

Firmware Version  
- 1.0.10

## Note

This manual provides information to configure Veilux Cameras and Veilux Video Servers products through admin page settings.

For the connection to the admin page enter

**[http://\[IP address:http port\]/admin.htm](http://[IP address:http port]/admin.htm)**

into the address field of internet explorer.

Refer to the manual of each product for product specific installation information or operational guide.

**Revision History**

<b>Date</b>	<b>Rev No</b>	<b>Description</b>
2009-08-20	1.0	Creation of the document
2009-11-06	1.1	Revision of title name
2010-02-08	1.2	Revision of the Video and PTZ setup

## Contents

Contents .....	3
1. Preparation for the connection .....	4
1.1. Product Installation .....	4
1.2. PC Requirements .....	6
2. Configuring IP camera and video server in Admin Mode .....	7
2.1. Log On .....	7
2.2. Layout of the admin page.....	9
2.3. Basic Setup .....	10
2.4. Network Setup .....	12
2.5. Video Setup.....	16
2.6. User Admin & Time Setup .....	21
2.7. Sensor & Capture Setup.....	24
2.8. Alarm Device Setup.....	26
2.9. Motion Detection Setup .....	27
2.10. PTZ Setup.....	29
2.11. Upgrade & Reset.....	32
2.12. Status Report.....	35
3. Web Viewer.....	36
3.1. Web Viewer.....	36
3.2. Buttons and Indicators of Web Viewer. ....	38
3.3. Crop Video Setting .....	40
4. Trouble Shooting and Tips.....	41
4.1. Trouble shooting after installation .....	41
4.2. Trouble shooting after successful connection to the device.....	42
4.3. Do you want to use DDNS Server?.....	43

# 1. Preparation for the connection

## 1.1. Product Installation

Brief information for rapid installation is provided in this section. For more detailed information you are recommended to refer to pertinent documentations provided with the product.

1. **Connect the device to network.**
2. **Apply power to the device**



Varieties of power supplying option are provided for each of the product. Please refer to the manual of each specific product for available option.

3. **Install "IP installer (Ver.3.0.1 or above)" and "NVXR-64 (Ver.5.0 or above)" on your PC.**

Detailed information for installing these programs can be found in [\[IP-Installer User's Guide\]](#) and [\[NVXR-64 User's Guide\]](#), respectively.

4. **Assign IP address to the product using IP installer.**

Identify the type of the network environment and set up IP address. Detailed process of setting up IP address can be found in [\[IP-Installer User's Guide\]](#). If network type is xDSL or Cable modem you need supplementary information provided by your ISP.

### **Brief instruction of using the IP-Installer follows:**

IP-Installer is a PC program for initial network configuration of these products. IP-Installer is provided in a CD supplied with the product or it can be downloaded from "[www.Veilux.net](http://www.Veilux.net)".

- i) Starting IP-Installer

Upon initiation of the IP-Installer, the PC will ask for the selection of proper network adaptor. Click on proper LAN or WIFI network interface module displayed to highlight the selection and click on "**OK**" to start the program.

ii) Find the device for the configuration

Click on **"Refresh"** button to find the list of the products (IP cameras or video servers) connected on the same subnet as the PC.

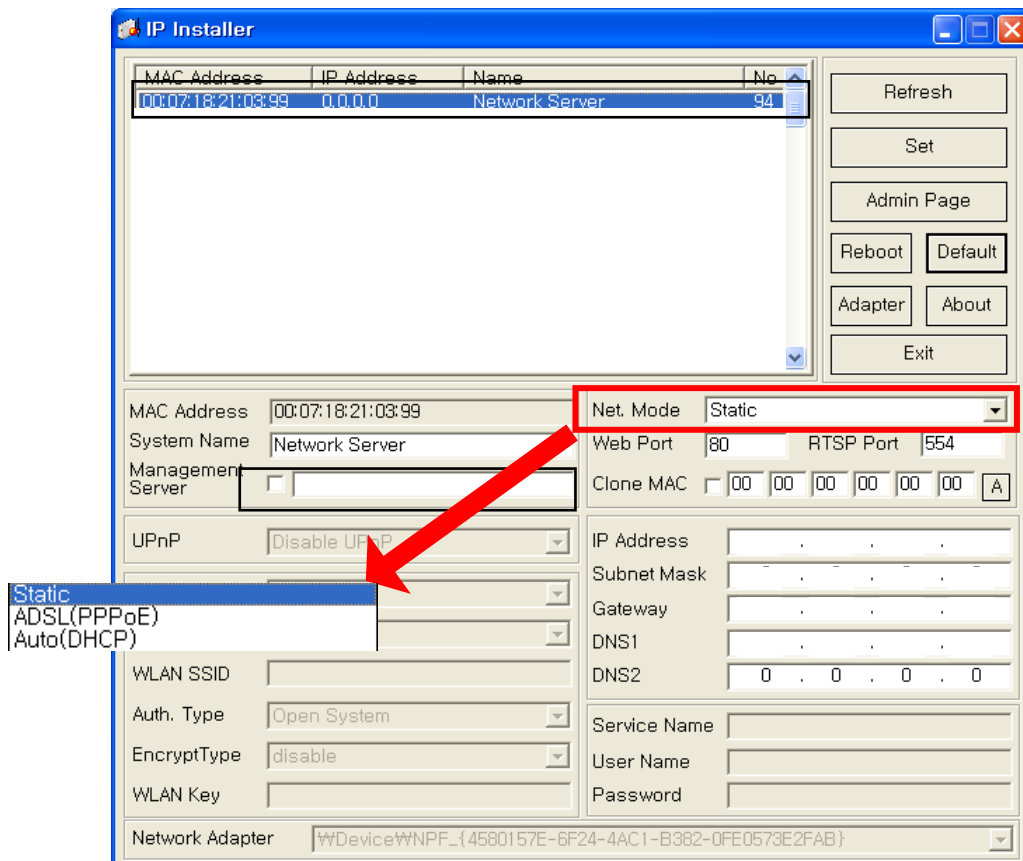


Fig. 1-1. IP-Installer.

iii) Assign network parameters needed for connection to the product. Please follow through the following procedures.

- a. Double click on a product you want to set up.
- b. The selected product will be highlighted and network parameter settings will be shown. Each product can be identified with unique MAC address. Refer to the following figure for an example.
- c. If you want to change or initiate the network settings, fill in the fields with white background (the fields surrounded by red rectangles below) with proper values.
- d. Once you fill in the fields, click on **"Set"** to initialize the product with new settings.

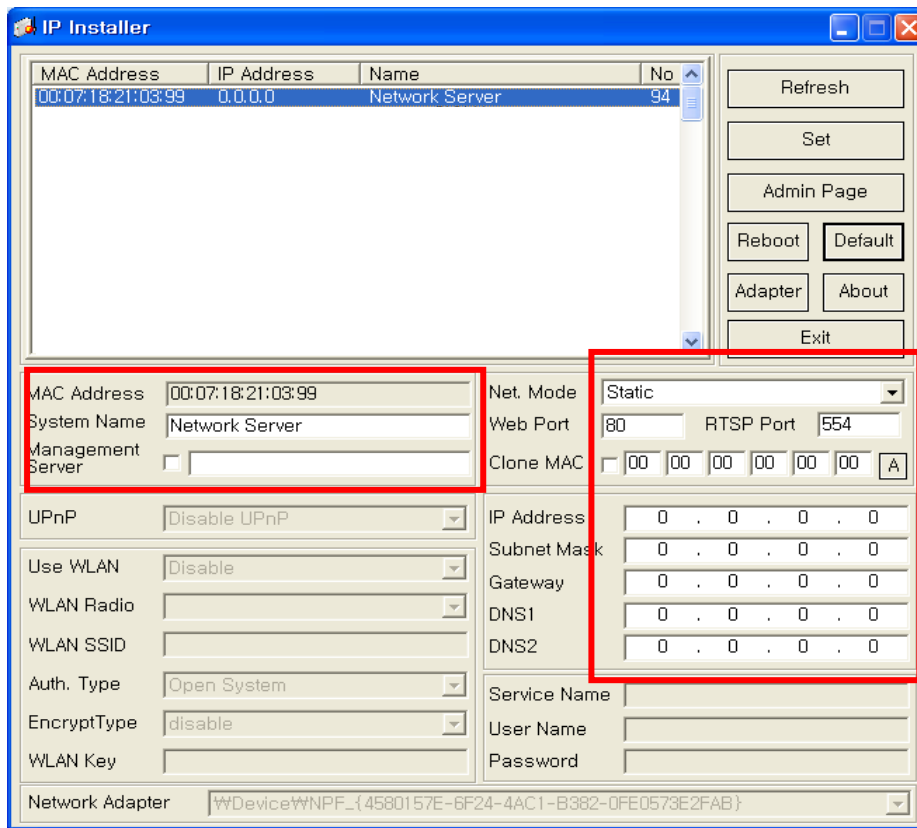


Fig. 1-2. IP-Installer.

## 1.2. PC Requirements

AV streaming data received from IP camera or video server can be decoded or stored in a PC running i-NVR program or other CMS program. Minimum requirement of the PC is recommended as in the following table.

	Recommended minimum	Misc
CPU	Pentium-4 3GHz	
Main Memory	1GB	
Operating system *	Windows XP, Vista, 7 (32 Bit)	
Web browser	Internet Explorer 5.0	
Graphic Card	Chip set based, 64MByte graphic memory	Resolution : 1600x1200
Network	100BT	

## 2. Configuring IP camera and video server in Admin Mode

The operational condition of the IP cameras and video servers can be set up over the network. This chapter describes general information of setting up these products over the network. The products covered include some of the Veilux IP Camera & Veilux IP Video Server products.

The connection to the admin page is made through the internet explorer.

### 2.1. Log On

There are 2 ways of connecting to the IP camera or video server in admin mode. One is through Internet Explorer and the other is through "NVXR-64" program.

#### 1. Using Internet Explorer

Type in the connection address of the product in the address field of the Internet Explorer as followings:

[http://\[IP address of the product\]/admin.htm](http://[IP address of the product]/admin.htm)


**Example: <http://172.16.64.133/admin.htm>**

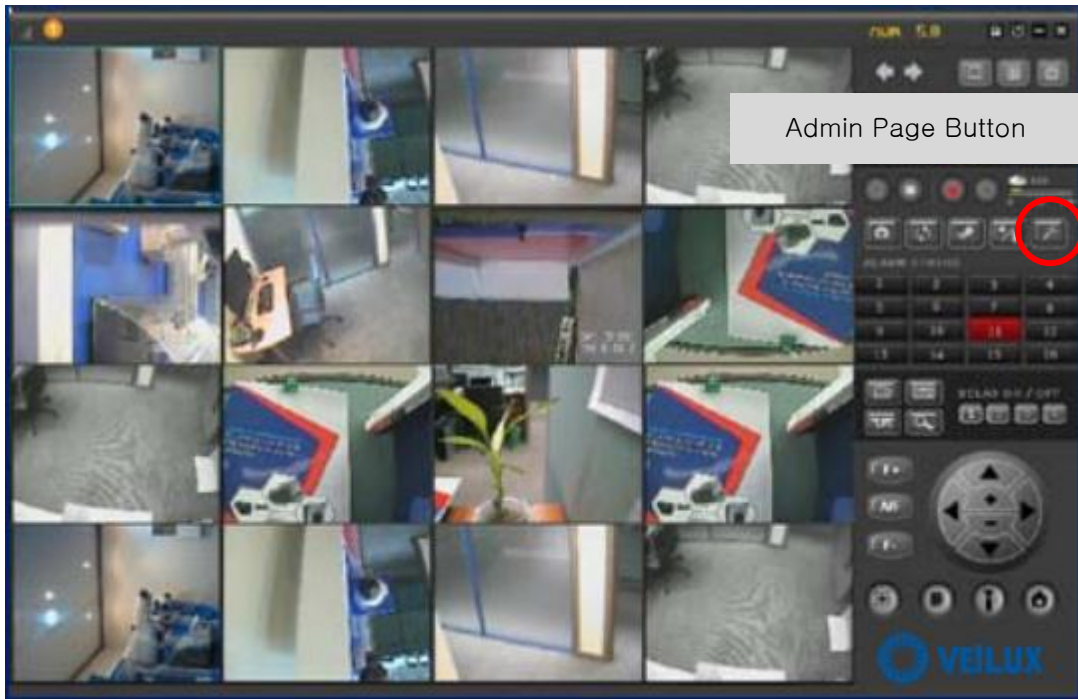
If you changed the HTTP port of the product from default value (80) you can login by typing in:

[http://\[device IP address\]:\[HTTP port\]/admin.htm](http://[device IP address]:[HTTP port]/admin.htm)

**Example: <http://172.16.64.133:8080/admin.htm>**

#### 2. Log on from "NVXR-64"

Select video channel in the viewing window of "NVXR-64". Selected video channel will be highlighted. Click  button on the right side of the display screen. Upon connection, internet explorer starts to initiate the admin page.



**Figure 2-1. Select display channel and click "Camera Admin" button for Log on to admin mode from "NVXR-64"**

**3. Input User Name and Password in the display screen shown in Figure 2-2.**



**Fig. 2-2. Log On Screen**

Factory default **"User Name"** and **"Password"** are set as 'root' and 'admin', respectively. Click on "OK" button to enter into the **Basic Setup** page of Admin mode. If you have changed the username

and password of the Administrator, you must log on with the changed username and password.

## 2.2. Layout of the admin page

Upon initiation of the admin page, the screen similar to the following picture will be shown.

The left side of the admin page shows various admin page menus, while the right side shows the settings of selected admin menu. Click each of the menu items at the left to go into specific admin page.

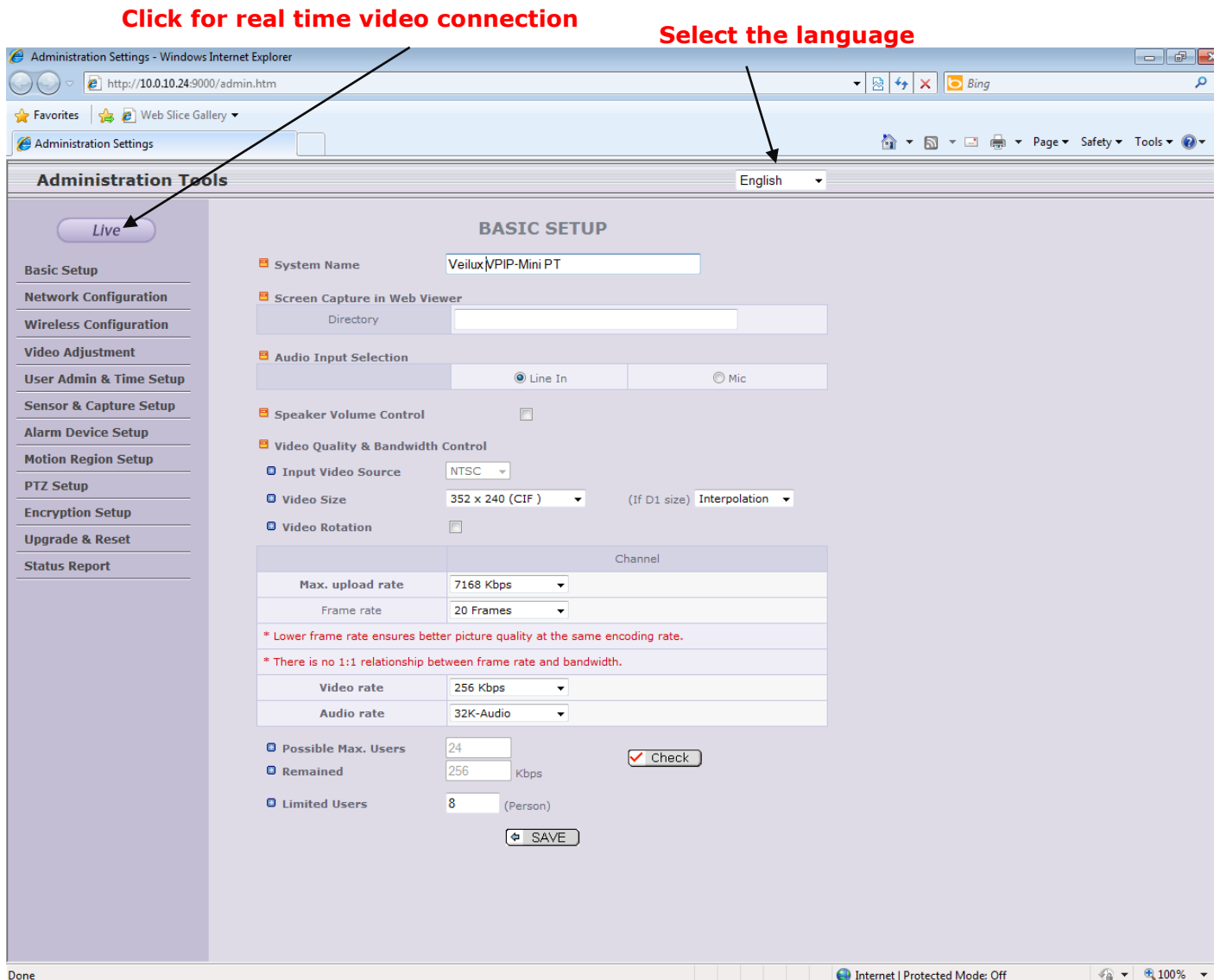


Fig. 2-3. Layout of Admin Page

- Click on “**Live**” button for initiating live video connection.
- Select the language of your preference from drop down list.

The following sections describe details for each admin menu page.

### 2.3. Basic Setup

Setup the basic parameters for the operation of the product.

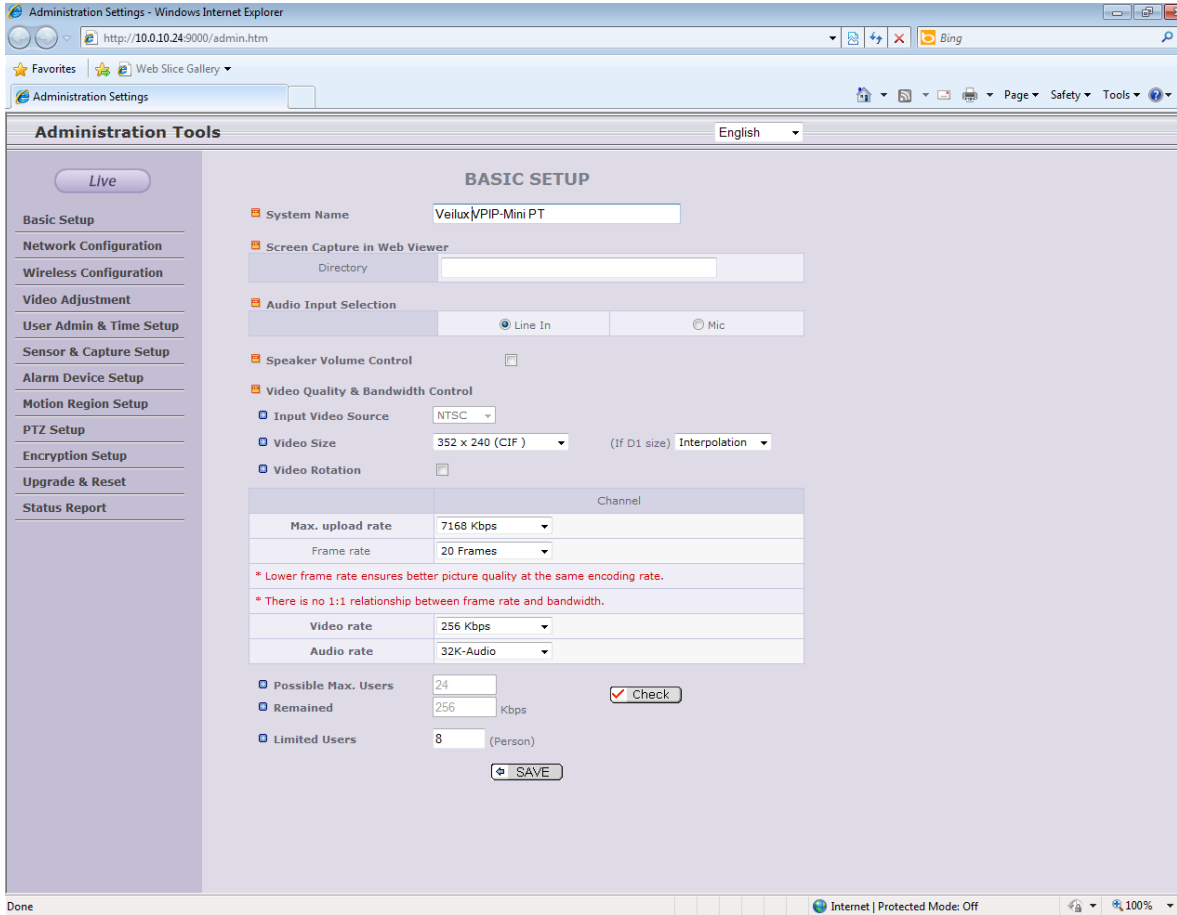
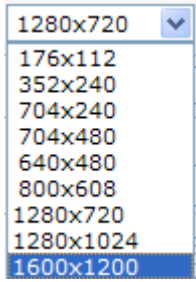


Fig. 2-4. Basic Setup.

Field/Button	Sub Field /Button	Description
System Name		Logical name of the product. It is same as the one set-up by IP-installer. You can reassign the logical name. The system name will be shown in the connection through NVXR-64.
Screen Capture in Web Viewer		Designate the folder to save captured image in Web viewer. Default path is Desktop.
Audio Input Selection		Select the type of input audio. <ul style="list-style-type: none"> <li>● Select <b>Line In</b> to use Line-out from audio device.</li> <li>● Select <b>Mic</b> to use microphone.</li> </ul>
Video Quality	Channel	Maximum three different video profiles can be transmitted

& Bandwidth Control	Enable	through different channel. Check at the box to enable the relevant profile.
	Max upload rate	Assign maximum bandwidth of the uplink for the network connected to device.
	VEnc Type	Assign video codec for the channel. Either H.264 or MJPEG can be chosen.
	Resolution	<p>Select video size from the following sizes. The video frame rate is limited to 15 frames/sec for the sizes 1280x1024 and 1600x1200.</p> 
	Frame rate	Assign video frame rate. You can improve picture quality by lowering frame rate for the same bandwidth. In high resolution video 1280x1024 and 1600x1200, the frame rate is limited to 15 frames/sec.
	Video Crop	Check at the box on channel 3 to enable video crop. Cropped video from other channels will be transmitted through channel 3, when enabled. Cropped video is a video from partial area of other channel. The numbers at the bottom of the box show the coordinate (surrounded by "()" ) and the size of the crop area. Pixel at the top left corner of the image sensor is designated with coordinate (0,0).
	Codec Performance Occupation	The performance demand and the total performance of the Codec are shown. The values are updated when the setting is stored. Error message will be popped up if the performance demand exceed the total performance.
	Video rate	Assign bandwidth for transmitting video data.
	Audio rate	Assign bandwidth for transmitting audio data. Audio data is not transmitted if you select "NA"
	Video rotation	Check at the box to rotate the video by 180°. If the video bandwidth setting is low, the frame rate can be lower than the setting or the video quality can be degraded.
<b>Save</b>		Save the set-up parameters when parameters settings are finished.

## 2.4. Network Setup

Setup the network parameters appropriately in accordance with your network environment. Many of the parameters in this page are same as those set up by "IP-Installer".

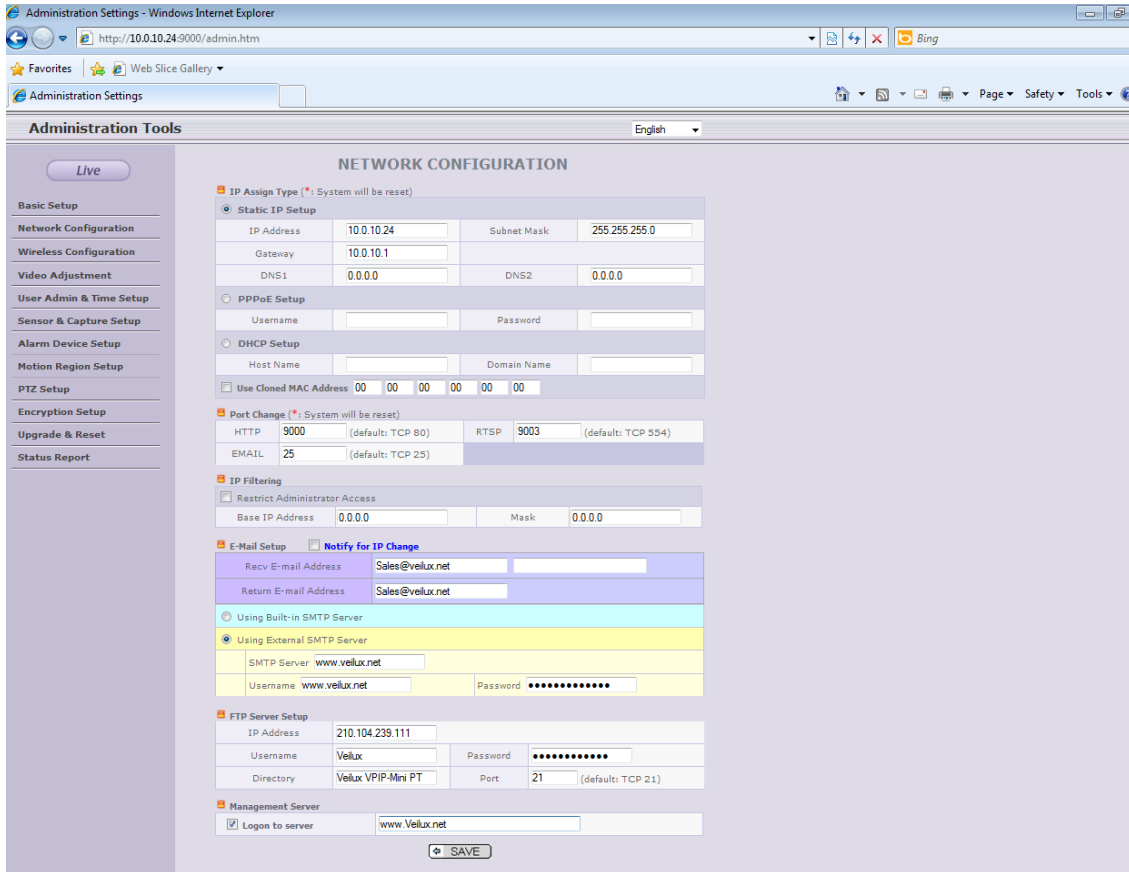


Fig. 2-5. Network Setup

Field/Button	Sub Field /Button	Description
IP Assign Type	The network types supported by the products are LAN(fixed IP), PPPoE, and DHCP(automatic IP allocation)	
	Static IP Setup	When the network environment is fixed IP, select 'LAN' in the network type, and input the IP address, Subnet Mask, Gateway, DNS1 and DNS2. Ask your network administrator or ISP for the information. DNS2 is used when DNS1 does not work.
	PPPoE Setup	When the network environment is PPPoE and IP address is assigned automatically, select 'PPPoE' in the network type. Next, fill in the 'User Name' and 'Password' fields with the values given by your ISP.
	DHCP Setup	When the DHCP server assigns IP address automatically, select 'DHCP' in the network type. Select this mode in case of Cable Modem. Refer to <a href="#">[IP-installer user's guide]</a> for "Host name and domain for Cable Modem"
	Clone MAC	Refer to <a href="#">[IP-installer user's guide]</a> for "Clone MAC"
Port Change	Each port should have a number below 65535.	
	HTTP	HTTP port is used for the connection to the admin page. Default is 80.
	RTSP	The RTSP port is used for transmitting real time audio/video data from the product. Default is 554.
IP Filtering	You can restrict the access to the admin page from IP addresses beyond certain IP address range.	
	Restrict Administrator Access	Check at this box to restrict log on to the admin page.

	Base IP Address	Input IP address of the PC which is intended to be used for log on to admin mode.
E-Mail Setup	Notify for IP Change	If you check this, the IP address will be sent via E-mail whenever the IP address changes. It is sent to the E-mail address set in " <b>Recv E-Mail Address</b> ".
	Recv E-Mail Address	Enter E-mail address of destination to which the information is sent from your product.
	Return E-Mail Address	Fill in this field with active and valid e-mail address to identify sender of the e-mail. Typical e-mail address will be the e-mail address of the owner or the administrator. If not set, the sender address will be set to "support@net-video.net". <i>Note that the e-mail message from the product might not pass through the SPAM filter of the receiver's e-mail server, when this field is not filled in with active e-mail address.</i>
	Using Built-in SMTP Server	If you are using web mail services having no SMTP server, check the radio button at the left of " <b>Using Built-in SMTP Server</b> " and enter active and valid e-mail address to avoid spam filtering on the receiving e-mail server.
	Using External SMTP Server	If you are using external mail server, fill in the fields with proper parameters.
	Use TLS	Check at this box to use SSL log on to the SMTP server.
FTP Server Setup		Setup IP address, Username, Password and Directory of FTP server to send captured video data. Default FTP port number is 21.

<p>Management Server</p>	<p>You can register the product to the Management Server (DDNS Server) for name service.</p>
	<p>Log on to server</p> <p>Check this box to enable log on to <b>management server (DDNS Server)</b>. By log on to the management server your product can use domain name instead of numeric IP address. This feature is particularly useful when your product is using dynamic IP address. Input the URL of valid management server (DDNS Server) for the service.</p> <p>You must have an account on the management server (DDNS Server) and register your product under your account to use this feature.</p> <p>Domain name of your product can be assigned when you register your product to the management server under your account.</p> <p>One of the servers available is <b>mgmt.net-video.net</b>. For opening an account, visit <b><u>www.net-video.net</u></b>.</p>
<p><b>Save</b></p>	<p>Save the set-up parameters when parameters settings are finished.</p>

## 2.5. Video Setup

You can adjust the parameters of input video. For example, the figure below is Video Setup and Camera Module Adjust of Veilux IP Camera series with “++” extension. The parameters will vary following the selection of camera modules. The selection of camera module is notified by the model name extension, which are ‘++’, ‘PB’, ‘E’, ‘MP’. Refer to the tables below for the details.

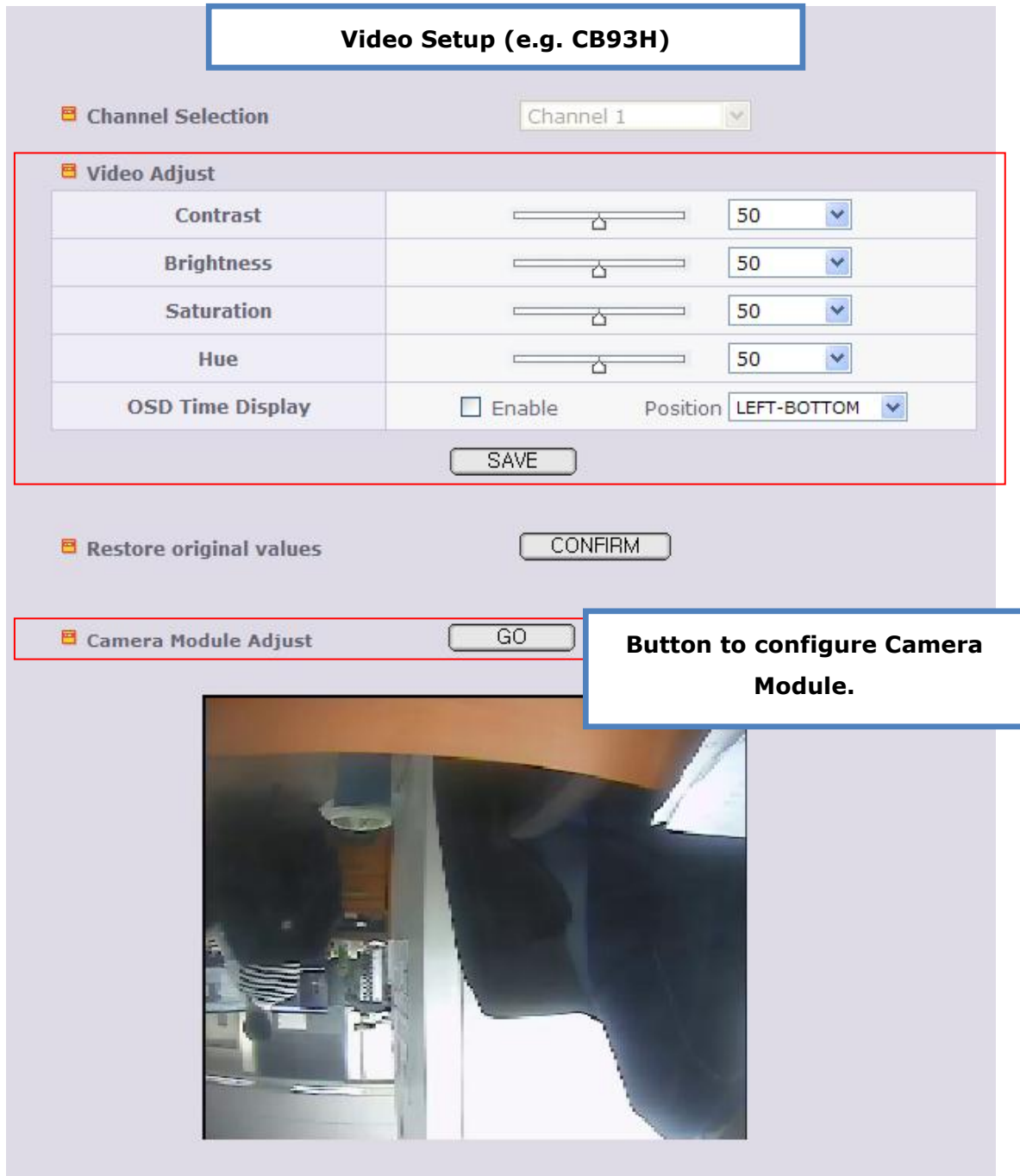


Fig. 2-6. Video Setup

Field/Button	Sub Field /Button	Description	Applicable Models
Channel Selection		Select the channel to adjust the video parameters. This feature is available only in multi channel video servers.	All
Video Control	Contrast	Adjust the contrast.	All
	Brightness	Adjust the brightness.	++, PB, E, Veilux Video Servers
	Saturation	Adjust the saturation.	++, PB, E, Veilux Video Servers
	Hue	Adjust the hue.	All
	OSD	Enable/disable OSD time display and designate the position of the OSD.	All
	SAVE	Save the settings.	All
Restore original values		Click on "CONFIRM" to restore the default settings.	All
Camera Module Adjust		Click on "GO" to adjust the camera module.	All

**Camera Module Adjust (e.g. CB93H)**

**Camera Module Adjust**

Lens Selection	ELC	DC Level	10
Backlight Compensation	OFF		
Auto Gain Control	ON		
Flickerless	ON		
AWB	ATW	Color Blue	17
Sharpness	9	Color Red	17

Restore original values
CONFIRM

SAVE

Video Setup
BACK



Field/Button	Sub Field /Button	Description	Applicable Models
Camera Module Adjust	Lens Selection	DC IRIS Lens	DC IRIS lens is a kind of auto IRIS lens. Opening of IRIS can be adjusted by DC voltage. The opening of IRIS is optimally adjusted by
			All

		detecting the signal level from the image sensor. This type should be selected when DC IRIS lens is mounted on your Product.	
	ELC	Manual Lens without IRIS control.	
DC Level	Adjust the brightness level by adjust this value.		All
Back Light Compensation	When the camera is acquiring video from object under bright backlight, it is hard to identify the details of target object since the object appears very dark. Apply backlight compensation mode for this case. Default mode is backlight compensation Off.		MP, ++, E
White Balance	Select the white balance mode of AWC, ATW, Indoor and outdoor. AWC : Apply this mode for normal usage. This mode provides even color reproduction for wide range of color temperature. ATW : This mode provides coverage for narrower color temperature.		MP, ++, E
Sharpness	Adjust the sharpness of the video.		MP, ++, PB, E
IR Filter	Adjust the IR filter level by selecting from low, normal and high. Default value is normal.		MP
Auto Gain Control	If you set the value to ON, the gain is automatically adjusted in accordance with the illumination condition.		++, PB, E
Flickerless	In case of using NTSC type device in 50Hz AC regions or using PAL type device in 60Hz AC region, video output tends to flicker when device is used under fluorescent lamps. This mode reduces the flickering phenomena. If this mode is selected, electronic shutter speed is set to 1/100 sec for NTSC camera, while it is set to 1/120 for PAL camera to synchronize the shutter speed to AC power cycle.		++, PB, E

		<Note> : Make sure that you apply this mode only when using NTSC camera in PAL region or PAL camera in NTSC region.	
	Color Blue	Adjust the color blue.	++
	Color Red	Adjust the color red.	++
Restore original values		Click on "CONFIRM" to restore the default settings.	All
SAVE		Save the settings.	All
Back		Click on "BACK" to go back to Video Setup page.	All



The settings on this table are not applicable on Video server (6xx series).

### 2.6. User Admin & Time Setup

You can change the ID and password of users and also assign different attributes to each user.

Fig. 2-7. User Admin. & Time Setup

Field/Button	Sub Field /Button	Description
User Administration	Administrator Username	Admin ID. Default ID is "root"

	Administrator password :	Admin password. The default password is "admin".
	Administrator Confirm Password	Enter the password once more to confirm the password.
	Add User Username	Enter the user ID you want to add. Up to 100 users can be registered in the product.
	Add User Password	Enter the user password.
	Add User Attribute	<p>You can assign different privileges to users in the access to system resources.</p> <ul style="list-style-type: none"> <li>● Attributes are Audio, Bi-directional Audio and Pan/Tilt control.</li> <li>● For example, if you want a specified user to hear the audio from the device, check Audio in the check box.</li> </ul>
	User List	<p>You can list "user ids" and " their attributes" here.</p> <ul style="list-style-type: none"> <li>● format : user id[A, BA, P] : <ul style="list-style-type: none"> <li>■ A – audio,</li> <li>■ BA – bi-directional audio,</li> <li>■ P – PTZ(Pan/Tilt/Zoom), attribute.</li> </ul> </li> </ul> <p>You can delete specific user by clicking on "DELETE" button.</p>
Authentication for Viewing	YES SAVE	If you want to restrict viewing access to the product, check at the box left to "Yes" and click on "Save". Users need to input ID and password to connect to the product in viewing mode.
	If No, default attribute	If you uncheck for the "Authentication for Viewing", all users can access the product with the same default attribute. Checked attributes are enabled. Click "Save" to save the default attribute.
Time Setup	Current Time	It shows you the current time kept in the product.
	Synchronize with an Internet Time Server	Synchronize the time kept in the product with the time kept in time server on the internet at the right. When the time server is out of the reach from the product, you can assign time server by filling in "Specific Time Server" field.
	Synchronize With this Computer	Synchronize the time kept in the product with the time in the PC.

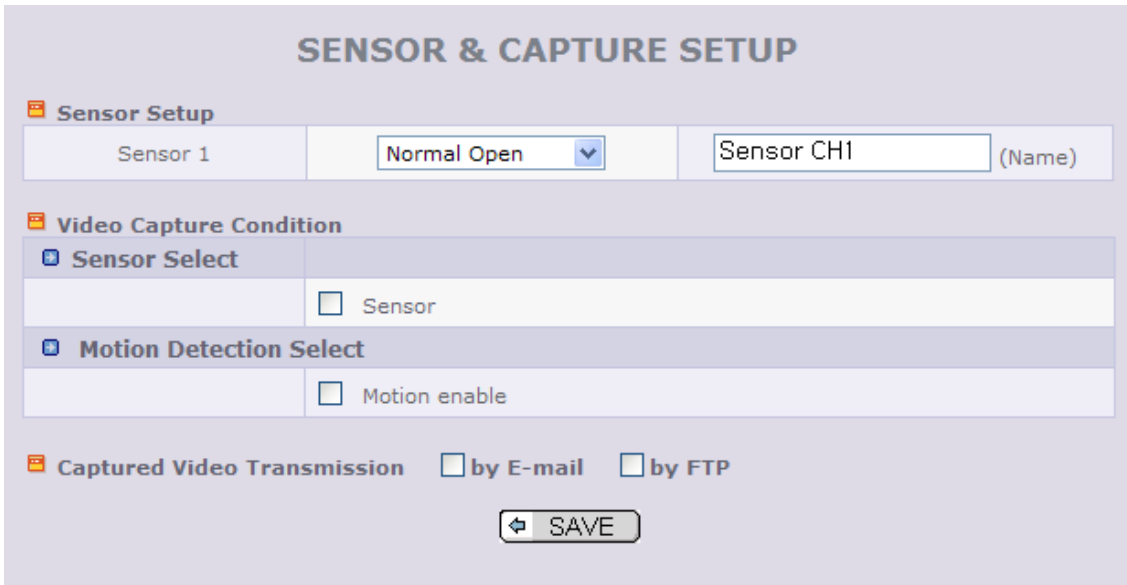
	Time	
	Set Manually	Set the time manually. Fill in the fields with desired formats.
<b>SAVE</b>		Save the set up parameters



**If you lost Administrator's ID and password, the only means of recovery is to reset the settings to factory default, but then you lose your previous settings.**

### 2.7. Sensor & Capture Setup

This is the setup page for sensors and video capture conditions. Captured video can be sent to user by FTP or (and) E-mail, or stored on local HDD.



**Fig. 2-8. Sensor & Capture Setup**

Field/Button	Sub Field /Button	Description
Sensor Setup	Sensor 1	Select sensor type. There are two types of sensors which are <b>Normal Open</b> and <b>Normal Close</b> .
	Name	Input logical name for the sensor.
Video Capture Condition	It sets the condition of video capture for FTP, E-mail or storing in the local storage. The product supports 2 types of conditions which are mutually independent.	
	Sensor Select	Check to enable Sensor initiated capture.
	Motion Detection Select	Check at the box to enable capture on motion detection.
Captured Video Transmission	Select a way of sending captured video. You can send captured video through FTP or(and) e-mail, or store in the local storage residing on the product.	
	By E-Mail	Check to send captured video by e-mail.

		<p>Captured video is sent to the <b>Recv E-mail address</b>. Refer to <b>[Network Configuration] for e-mail setting</b>.</p> <p>Captured video data sent over E-mail consists of intra frames only in consideration of the limited storage space of E-mail account.</p> <p>FTP data contains entire video frames.</p>
	By FTP	<p>Check to send captured video by FTP.</p> <p>Captured video is sent to the <b>FTP Server</b>. Refer to <b>[Network Configuration] for FTP setting</b>.</p> <p>If the FTP server is not properly assigned in "<b>Network Configuration" mode</b>, device ignores the video transmission by FTP.</p>
<b>SAVE</b>		Save the setup parameters.

### 2.8. Alarm Device Setup

Test the alarm output and describe the condition of alarm annunciation.

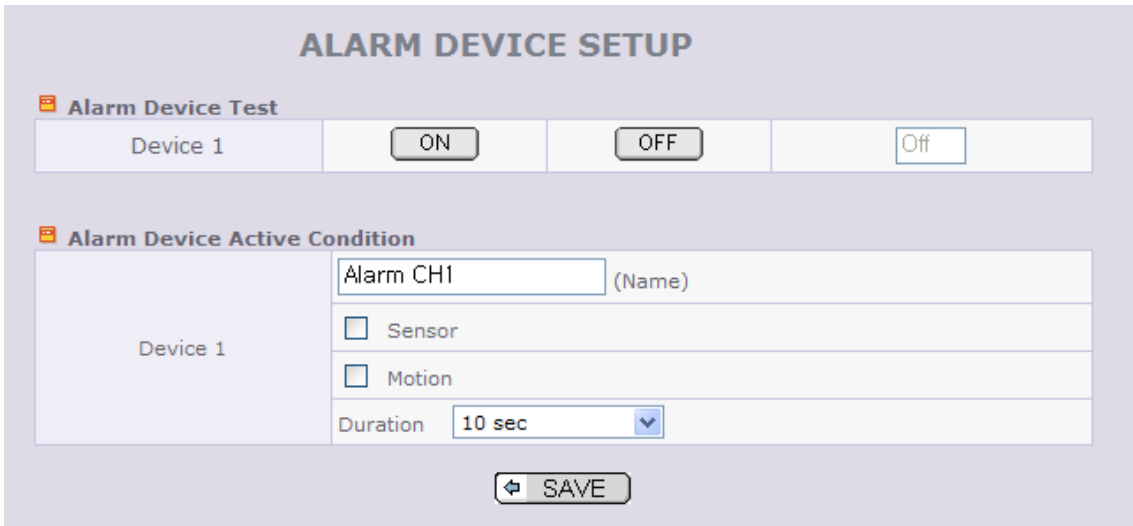


Fig. 2-9. Alarm Device Setup

Field/Button	Sub Field /Button	Description
Alarm Device Test		Test alarm devices. Click on On/Off for testing Small box with white background indicates the On/Off status of the relay.
	ON	On the alarm output (close the relay contact)
	OFF	Off the alarm output (Open the relay contact)
Alarm Device Active Condition		Set up the condition of activating each alarm device. Select sensor or motion detection.
	Name	Logical name of the alarm device can be input into the box at the left.
	Sensor	Check at the box at the left to allow alarm generation upon sensor input.
	Motion	Check at the box at the left to allow alarm generation upon Motion detection
	Duration	Set the duration of Alarm annunciation. 10 sec, 30 sec, 1 min, 2 min, 5 min, 10 min, 30 min, 1 hour.
SAVE		Save the setup parameters.

## 2.9. Motion Detection Setup

Set the motion detection regions. Up to 3 regions can be defined.

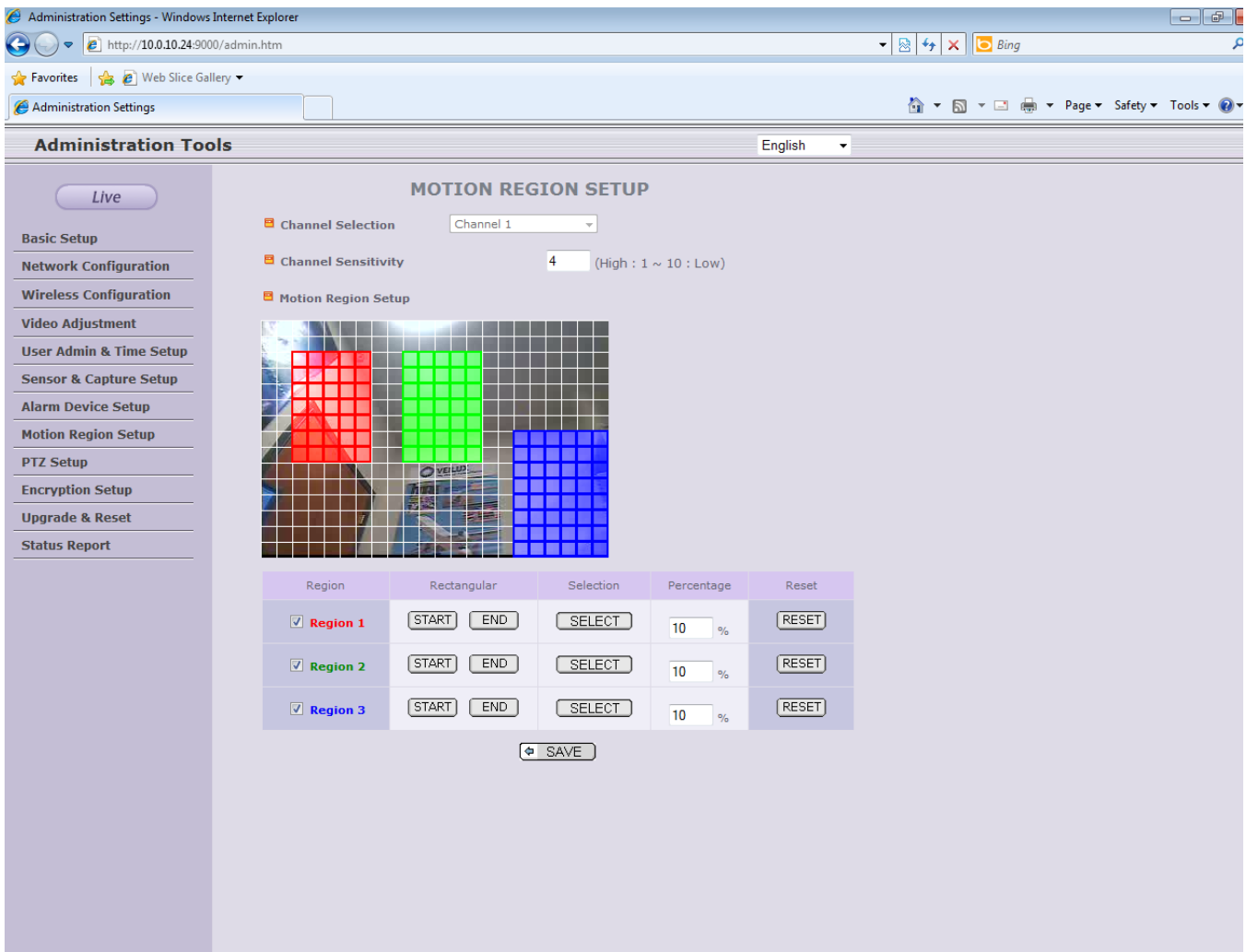


Fig. 2-10. Motion Detection Setup

Field/Button	Sub Field /Button	Description
Channel Selection		Select the channel to configure the motion detection zone. <i>(Channel selection is available only on multi channel products.)</i>
Channel Sensitivity		Set the sensitivity of motion detection for each channel. 1 is the most sensitive, while 10 is the least sensitive. (Default : 6) <i>Note that false motion alarm can be generated under noisy video when the device is set to be unnecessarily sensitive.</i>

Motion Region Setup	Up to 3 motion detection zones can be configured.	
	Region 1, 2, or 3	<p>Enable each zone by checking at the box at the left of each Region.</p> <p><b>. To set the region,</b></p> <ol style="list-style-type: none"> <li>1. Click on <b>START</b> and click on a box overlaid on the video</li> <li>2. Click on <b>END</b> and click on a box overlaid on the video.</li> <li>3. The defined motion detection zone will be indicated with corresponding color.</li> </ol> <p><b>Legend of the color :</b></p> <p>red(region 1), green(region 2), blue(region3).</p>
	START	Enable selection of rectangular zone start.
	END	Enable selection of rectangular zone end.
	SELECT	Click on this button and click on desired rectangle to add or delete a boxed region to the motion detection zone.
	Percentage	<p>This value controls the sensitivity of each region.</p> <p>1 is the most sensitive and 100 is the least sensitive.</p> <p><b>Note that false motion alarm can be generated under noisy video when the value is small.</b></p>
CLEAR	Clears the start & end point to (0,0) & (0,0)	
<b>SAVE</b>	Save the setup parameters.	

### 2.10. PTZ Setup

This is the setup page for PTZ. This page is available on the models including speed dome camera or PT device. You can configure PTZ parameters using Web Viewer or NVXR-64, too.

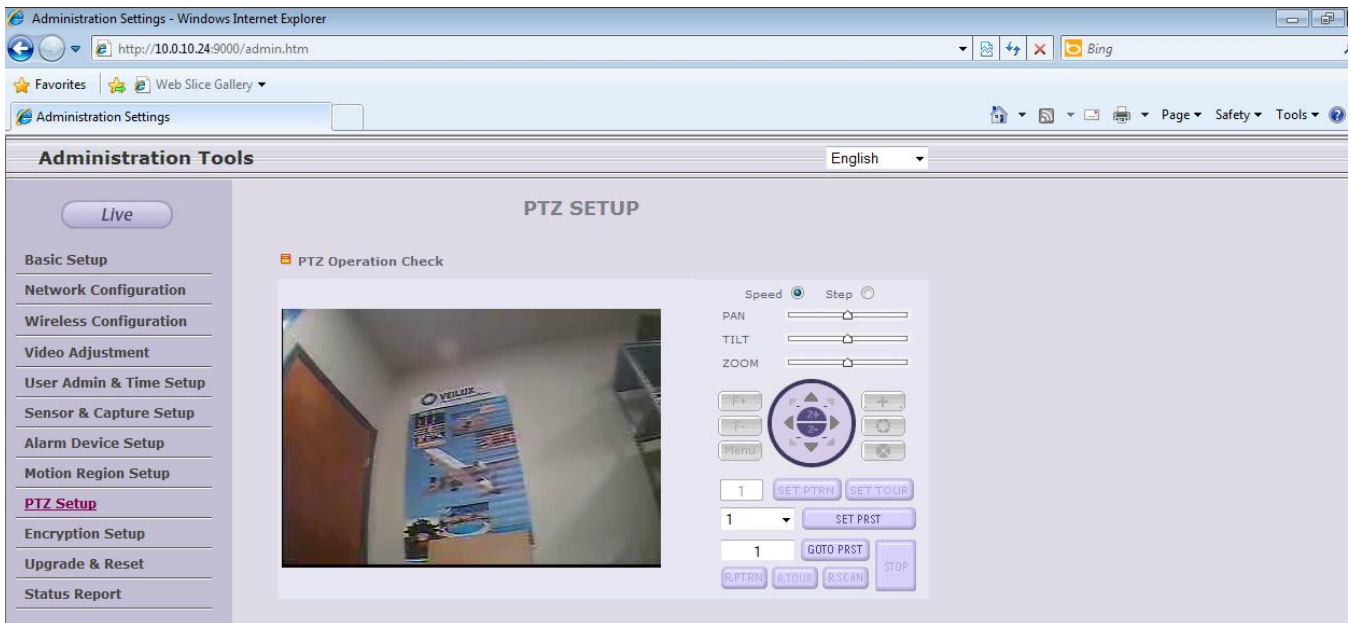

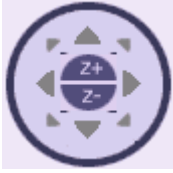
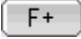













Fig. 2-11. PTZ Setup

Field/Button	Sub Field /Button	Description
<b>Channel Selection</b>		Not applicable
<b>PTZ Model Selection</b>		Choose the PTZ model. Do not change from the default selection for proper operation.
	Delete Button	Click on this button to delete a PTZ model. (Do not delete the default model.)
<b>PTZ Device ID</b>		Your PTZ device needs an ID. Input ID in this field. Click on SAVE to save the ID.
<b>PTZ Operation Check</b>	Speed	Select this RADIO button to set the speed of the PTZ operation.
	Step	Select this RADIO button to set the step size of PTZ operation.
	PAN	Move the slider to adjust the speed or step in panning.
	TILT	Move the slider to adjust the speed or step in tilting.
	ZOOM	Move the slider to adjust the speed or step in zooming.

		<p>Camera Position Control</p> <p>Pan/Tilt control</p> <p>Zoom In</p> <p>Zoom Out</p>
		Focus Far
		Focus Near
		<p>Enter into OSD menu for camera setting.</p> <p>In the OSD menu, use Up/Down buttons to navigate through the menu item on the screen.</p> <p>Depending upon the situations Left/Right buttons will perform one of the followings.</p> <ol style="list-style-type: none"> <li>1. Change parameter value in each submenu.</li> <li>2. Decrement/increment the numbered value.</li> <li>3. Go into lower level menu trees.</li> <li>4. If clicked when the cursor is on "EXIT", upper menu will be activated or OSD menu mode will be finished.</li> </ol> <p>For more detailed information, refer to the product manual.</p> <p><b>If the product can't support the OSD menu, "Menu" button is disabled.</b></p>
		<p>Centering.</p> <p>Left : Deactivated.</p> <p>Right : Activated.</p> <p>After activating this mode, the camera will move so that the clicked point on the video is located at the center of the video.</p>
	Iris Control	

	Set Pattern <sup>1</sup>
	Set Tour <sup>2</sup>
	Set Preset <sup>3</sup>
	GOTO Preset
	Run Pattern
	Run Scan
	Stop any PTZ command

**1. Pattern Setting Procedure (Pattern is a recorded sequence of PTZ operation steps)**

- a. Choose Number to be assigned as Pattern ID
- b. Click "SET PTRN" button to start recording the pattern. The OSD menu will appear on the screen.
- c. Operate the camera using Pan/Tilt/Zoom Control
- d. Click "SET PTRN" again to save the pattern.

**2. Tour Setting Procedure : (Tour is a series of Preset)**

- a. Choose Number to be assigned as Tour ID
- b. Click "SET TOUR" button to start tour setting. The OSD menu will appear on the screen.
- c. Choose preset number and Click "GOTO PRST" .
- d. Repeat procedure "c" to assign a series of preset positions to the tour.
- d. Click "SET TOUR" again to save the tour.

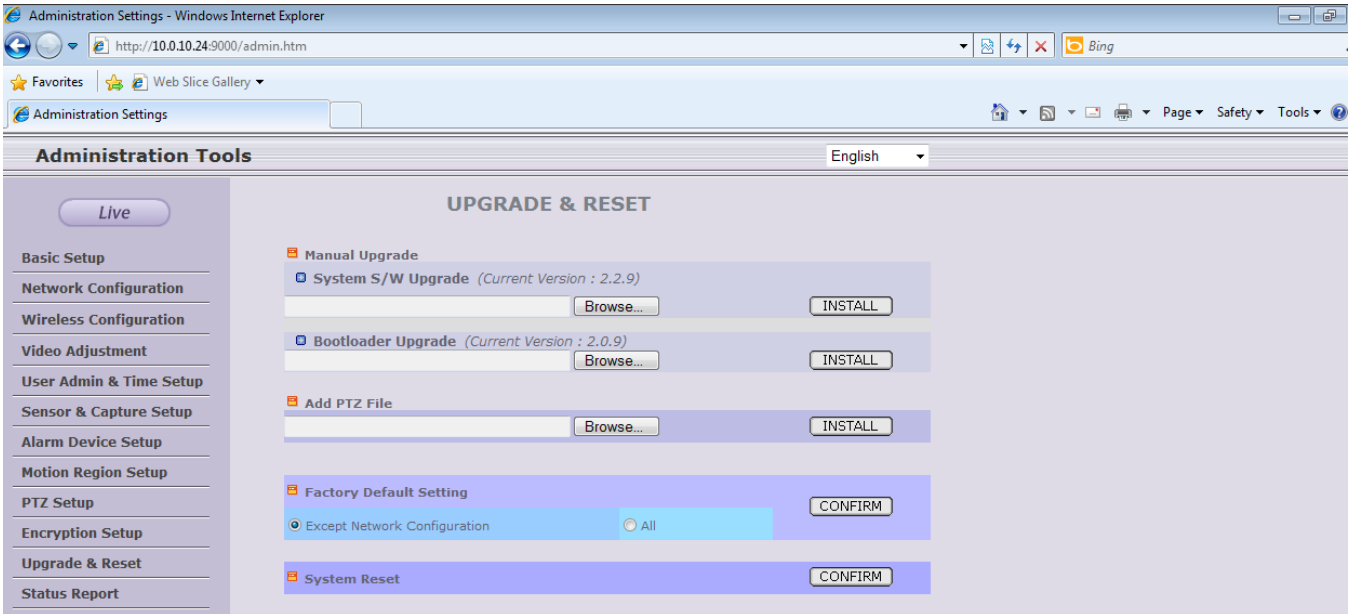
**3. Preset Setting Procedure**

- a. Choose Number to be assigned as Preset ID
- b. Pan/Tilt/Zoom Control
- c. Click "SET PRST" button to save the preset position.

### 2.11. Upgrade & Reset

You can upgrade the device via the IP network.

Upgrade is a process to renew the System Software stored in the non-volatile memory of the system. You must restart the system by "System Restart" to run the system with the upgraded system software.



**Fig. 2-12. Upgrade & Reset**

Contents of the upgradable system component should be downloaded from **Veilux’s** home page before the system upgrade is performed.

Field/Button	Sub Field /Button	Description
Manual Upgrade	Upgrade the system manually.	
	System S/W Upgrade	Upgrade the system software installed on the product via the network. System software needed for the upgrade can be downloaded from Veilux’s home page.
	Bootloader Upgrade	Upgrade the bootloader installed on the product via the network. Bootloader needed for the upgrade can be downloaded from Veilux’s home page.
	Camera Firmware Upgrade	Upgrade the analog camera module installed on the product via the network. Firmware needed for the upgrade can be downloaded from Veilux’s home page.

<p>Factory Default Setting</p>		<p>Re-initialize the network camera to factory default state. By checking on a Radio button "Except Network Configuration", you can preserve the parameters for the network. Checking on "All", will return all the parameters to factory default state.</p> <p><b>Once all the values are set to factory default state, the product should be set-up again using IP-Installer.</b></p>
<p>System Restart</p>		<p>Perform remote reset by clicking on the "CONFIRM" button. <i>[Important] To apply upgraded contents, you should perform System Restart.</i></p> <p><b>All previous connections will be disconnected upon reset. Device does not resume the connections and the users must re-connect to the product manually.</b></p>

**Upgrading the device.**

Unless otherwise instructed, the owners of the device are recommended to upgrade the system when upgraded firmware is released using manual upgrade procedure.

**Followings are the procedure to apply for the manual upgrade**

- 1) Save the upgrade system software to your PC. Upgrade software can be downloaded from Veilux home page or provided in CD.
- 2) Connect to the product in admin mode and select "Update & Reset" menu.
- 3) Click "Browse..." to find the files you want to use for upgrade. This will open a "Choose file" dialogue window. The file extension is ".ief" for the case of system firmware.
- 4) When you've found the file, click "Open." This will select the file and close the "Choose file" dialogue window.
- 5) Click the "INSTALL" button. An alert message box will pop up. Click "OK" button then it will start uploading the file. This may take some time.
- 6) Upgrade completion message will appear after the system upgrade has been completed.

- 7) Reboot device by performing "System Restart".
- 8) After rebooting, log on to the product in admin mode again and click the "Status Report".
- 9) Check the version number and release date of the firmware.



You can download system software of the device from Veilux's homepage.  
<http://www.Veilux.net>



Once the system is reset to the factory default state by system reset of the administrator, all the connection of the users might be disconnected. Since the connection is not recovered automatically, users should set up the connection manually with new connection information.

## 2.12. Status Report

It shows you system records since the system started.

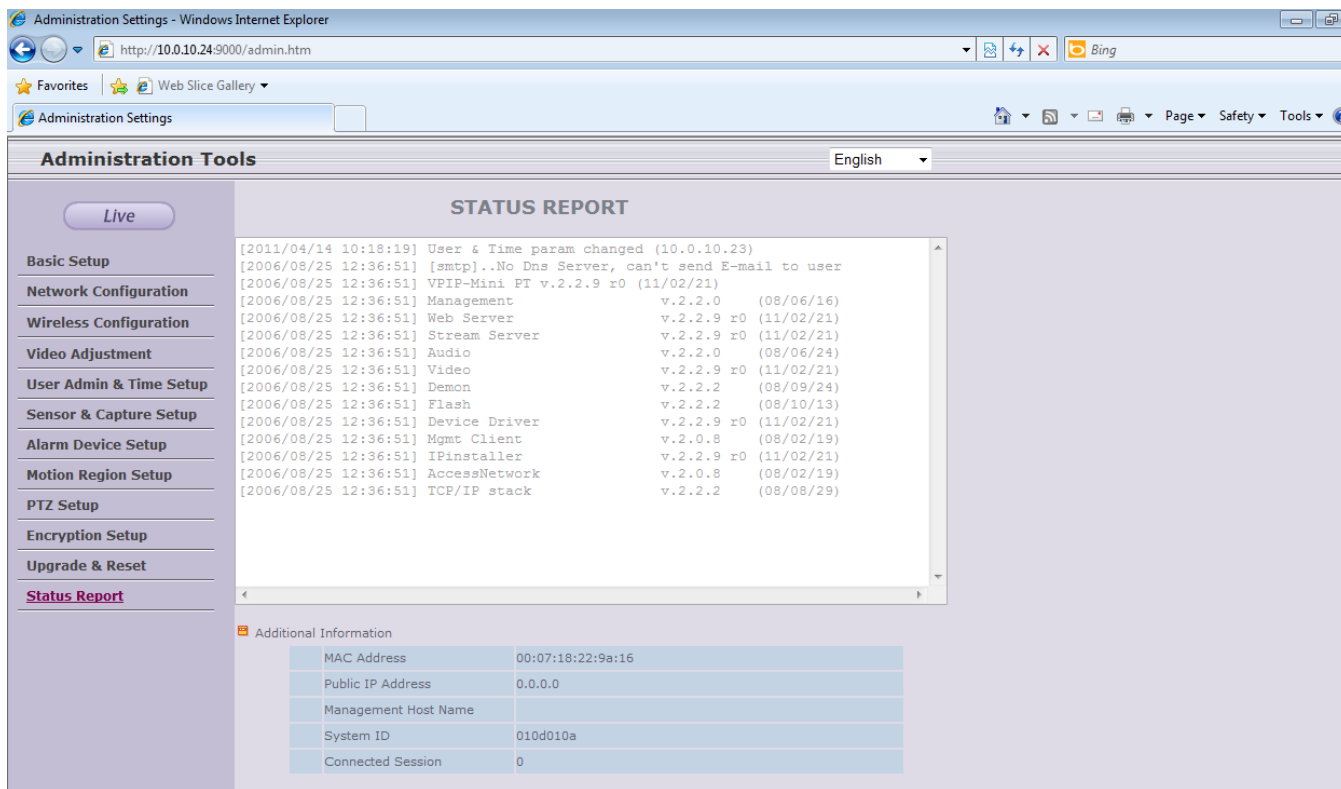


Fig. 2-12. Status Report

You can check the problems as well as the versions and event status of the whole system and modules.

### 3. Web Viewer

#### 3.1. Web Viewer.

IP camera and video server provide video connection over the internet explorer. The web viewer might be different on different product.

Video crop feature is available from the web viewer.

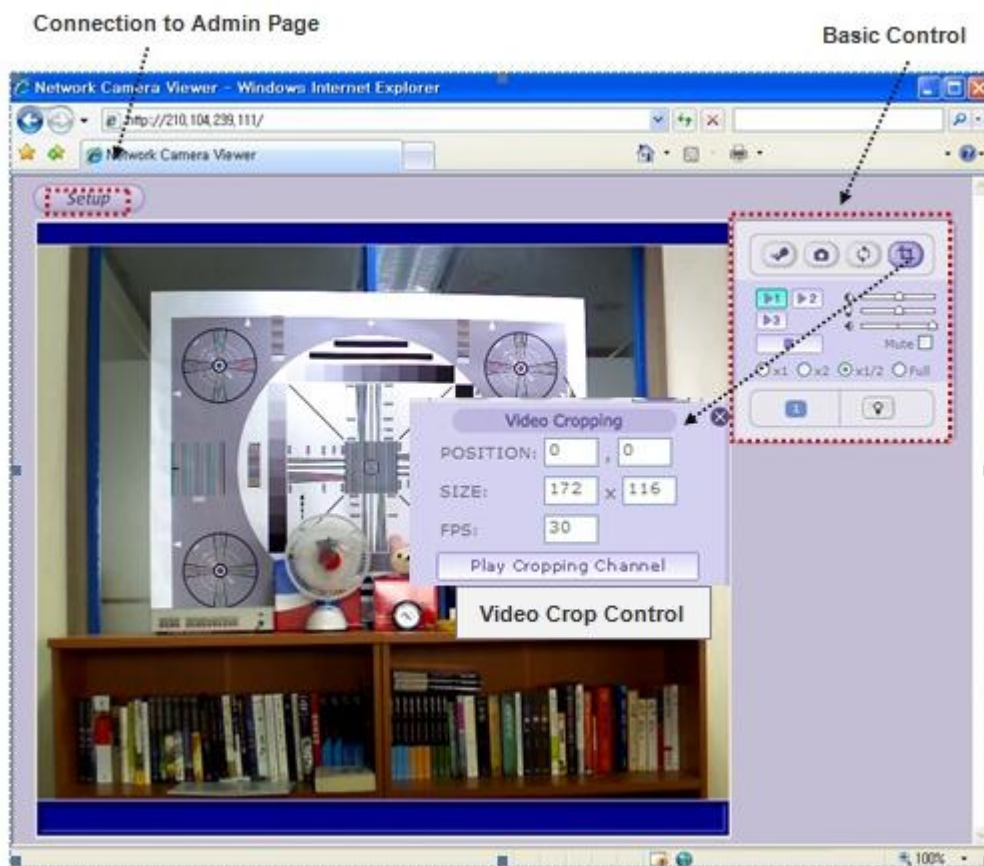


Fig. 3-1. Web Viewer-1

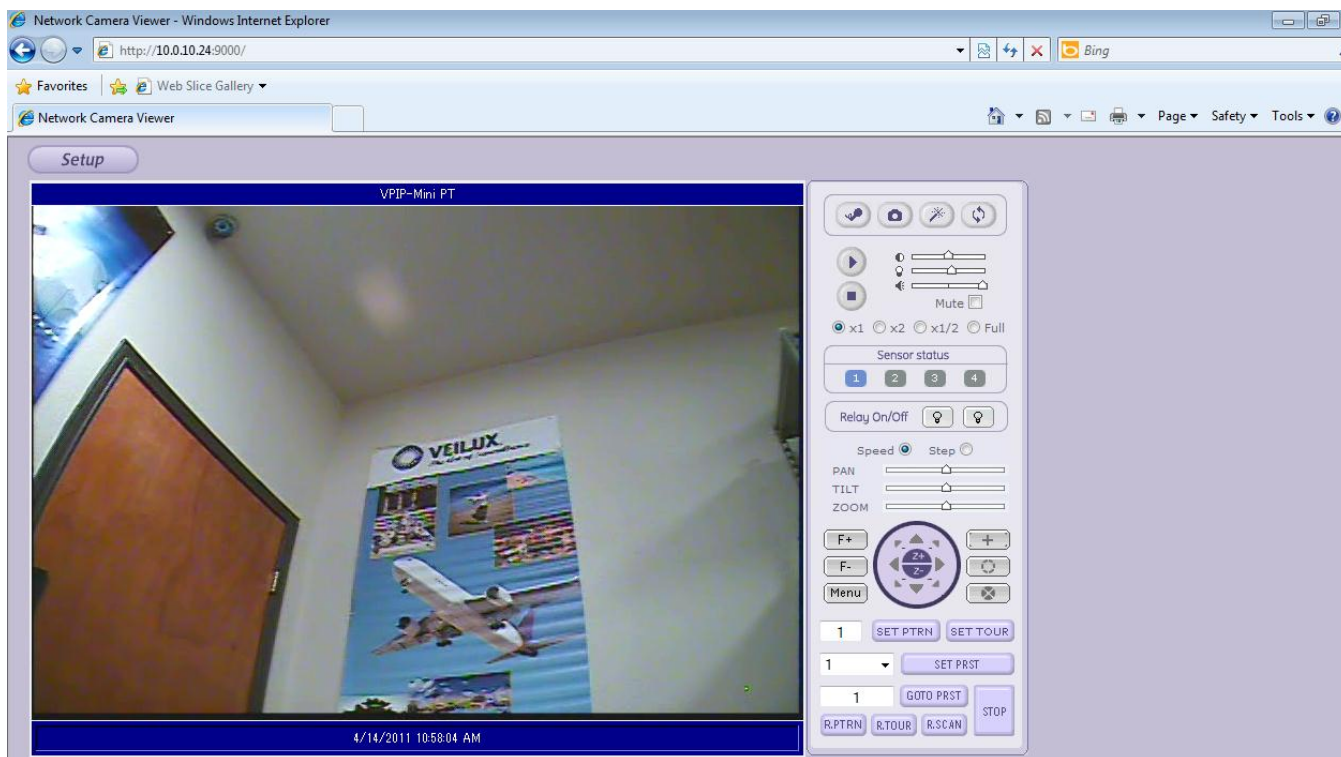
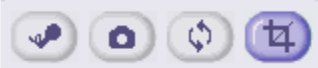

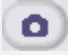


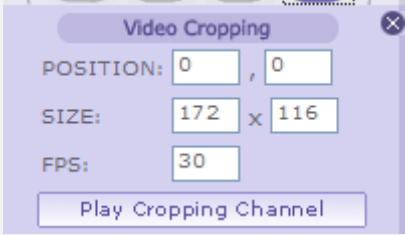


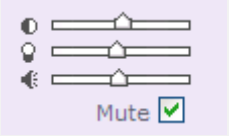








Fig. 3-2. Web Viewer-2



Please refer to the section [PTZ Setup] for the details on the PTZ menu.

**3.2. Buttons and Indicators of Web Viewer.**

		On/Off control of bidirectional audio communication. Bidirectional audio communication is enabled when highlighted.
		Capture a still video cut. Captured video is stored in the folder designated in [2.3].
		Rotate the video by 180o.
		Start Crop Video. Crop video is always transmitted through channel 3.
	POSITION: <input type="text" value="0"/> , <input type="text" value="0"/>	Set the coordinate of the top left corner of the crop video.
	SIZE: <input type="text" value="172"/> x <input type="text" value="116"/> FPS: <input type="text" value="30"/>	Set the size and frame rate (frames/sec) of the crop video. Maximum size is 800x600 and maximum frame rate is 30 frames/sec.
	<input type="button" value="Play Cropping Channel"/>	Click to start transmission of crop video on channel 3.
		Click on the button to connect to the channel. If crop video is enabled, it is available through channel 3.
	<input type="button" value="Disconnect"/>	Disconnect the video.
		Contrast and brightness adjustment. The adjustment value is stored on the PC.
		Volume control and audio mute control.
<input checked="" type="radio"/> x1 <input type="radio"/> x2 <input type="radio"/> x1/2 <input type="radio"/> Full		Adjust the size of the video.

		Shows the status of the sensor. Highlighted color indicates that the sensor is activated.
		On/Off control of the relay. Highlighted color indicates that the relay is "On".

### 3.3. Crop Video Setting

The position, size and the frame rate of the crop video can be set in the web viewer. The blue area in the figure below shows the crop window from a 1600x1200 image sensor. Set the position as (400, 300) and the size as the desired. After the setting, click on (  ) to start video transmission.

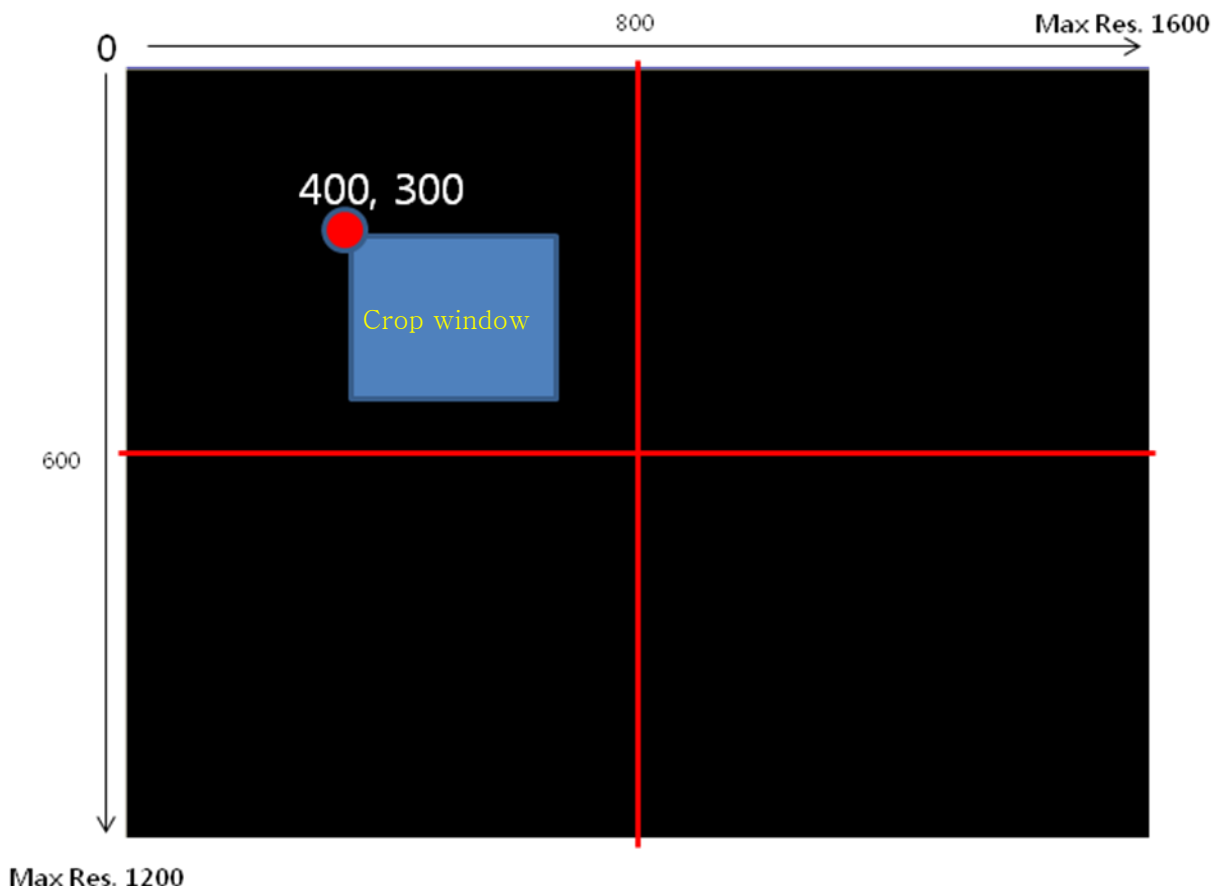


Fig. 3-2. Example of the crop window

NVXR-64 offers more advanced interface to the use of crop video. Please refer to the manual of NVXR-64 for the details.

## 4. Trouble Shooting and Tips

### 4.1. Trouble shooting after installation

- **Neither channel name nor video is shown up and eventually timeout message is shown up.**

Check the power and network connection of device.

To check if the network is properly operating, open the browser and try to connect to any server.

**Example) <http://www.yahoo.com>**

Or open the MS-DOS Prompt and type the following.

**ping [www.yahoo.com](http://www.yahoo.com)**

Then press Enter. If you see the "Reply from ..." message it means that the network is working properly. To check if the device is connected, open the MS-DOS Prompt and type the following.

**ping [the IP of the server]**

**Example) ping 192.168.1.112**

If you see the "Reply from ..." message, it means that the server is properly connected.

If you do not see a Reply message, check if the network cable and power cable are properly connected.

- **The name of the server is shown but no video is available.**

In this case, network connection is not a problem. Please do the followings:

- Check whether the video is properly applied into the product.
- Check whether there is firewall between the product and the client and check whether the network is NAT type.
- Connect to the product through TCP. (Actually only TCP is available presently)
- If the network type is NAT, "port mapping" should be done. The NAT server will send the packet through specific port to the product through "port mapping". IP sharing device has the "port mapping" feature in general. Details of the procedure can be found from the manual of the IP sharing device.

## 4.2. Trouble shooting after successful connection to the device

- **Video movement is slow.**

In Basic Setup of Admin Mode, lower the "Quality". High quality means more data. You can also set the "Max. upload rate" to higher value. But this value must be lower than the maximum upload speed of your network. For example, if the maximum uploading bandwidth of the network is 400Kbps, set the total "Max. upload rate" as 384Kbps. If you set it higher, the video image can be corrupted with artifacts.

Ask your network manager or ISP for maximum uploading bandwidth of the network.

- **The image is dull and I see green, pink dots.**

This could be caused by performance limitation of the PC. Do not run too many programs while running viewer program. The other reason could be missing data in the transmission from the device.

- **Mosaic phenomenon.**

Mosaic phenomenon occurs when not enough network bandwidth is available considering the resolution and frame rate of the video.

Example is 704x480 video with low Max. upload rate.

Users are recommended to adjust resolution and frame rates to lower values for lower bandwidth network.

### **4.3. Do you want to use DDNS Server?**

If you are using dynamic IP and you want convenient connection to your product through Internet, you are recommended to register the product to DDNS (Dynamic Domain Name Server). Follow the procedure below for the registration.

1. Run **IP installer** > select **network adaptor** > click **Refresh** > Double-Click **the product** on the list > select **Net. Mode** > typing **User Name** and **Password** if needed > check to use **Management Server** > type **mgmt.net-video.net** > click **Set** for save.
2. Open Internet **Explorer** > type in **http://www.net-video.net/** in address bar > **Enter**.
3. Click **Member Join** > type **the form** > click **OK** > click **Home**.
4. In initial page **Registration** > input **MAC Address** > input **Registration No.** > input **Hostname** > click **check** > check **pop-up message** > click **OK** > click **Home**.
5. **Reboot the product** > connect to the through **http://Hostname.net-video.net/** > video connection

For more details of the DDNS, go to **www.net-video.net** and refer to the guide available from the site.