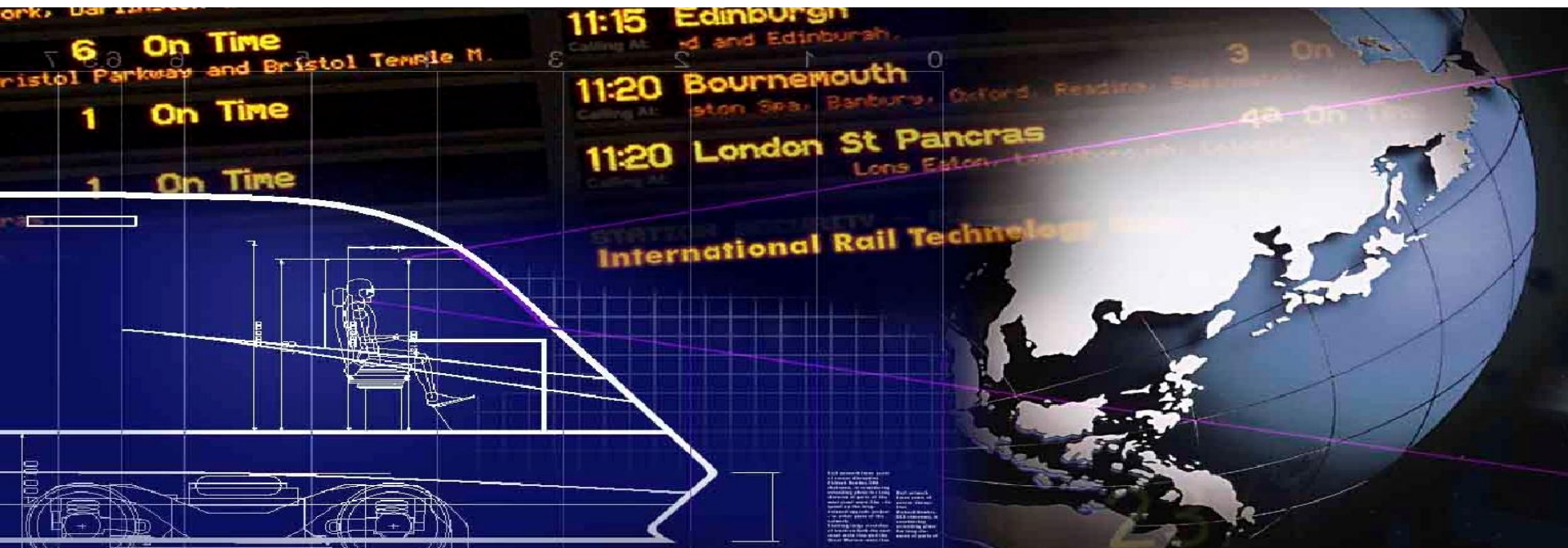




VEILUX

The Art of Surveillance

IP Surveillance



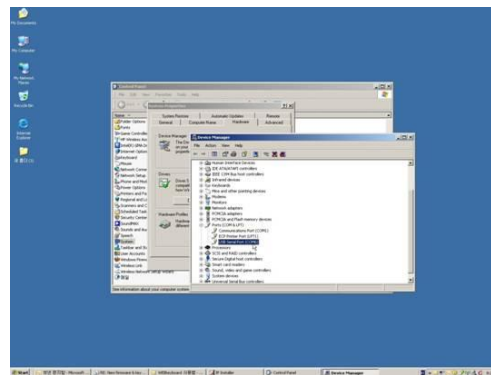


1. Connect power adaptor to web keyboard and USB cable to PC.

2. When windows detected USB device, device driver will be installed automatically.

If operating system don't install device driver, please download driver from Veilux Home page www.Veilux.net or the DVD that came with your VIK-USB.

3. Open Control Panel > System > Hardware > Device Manager

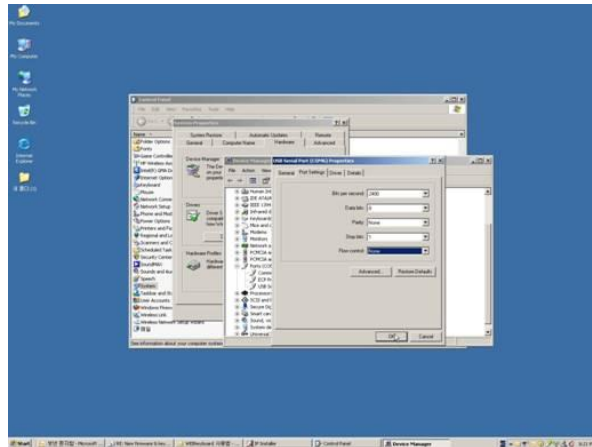




1. VIK-USB Installation & Connection with NVR-Pro

4. Open Ports item

5. Set properties as 2400bps, 8, none, 1, none

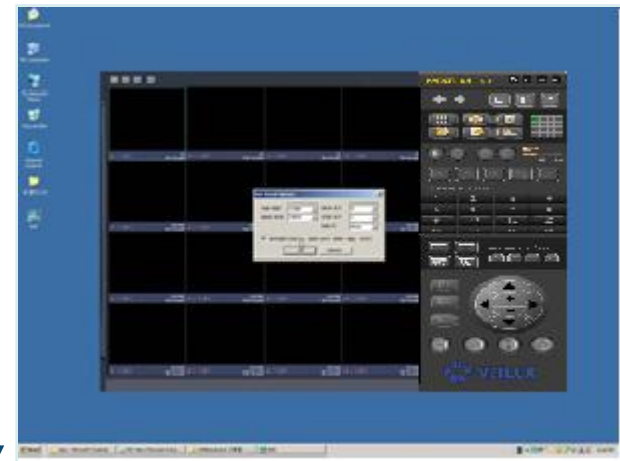
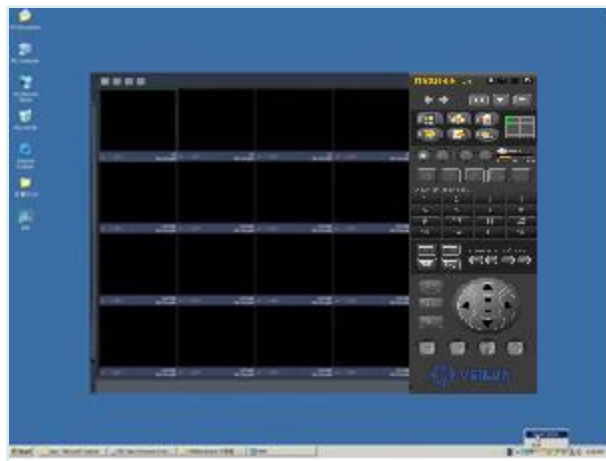


7. Do Port setting as information of Device Manager



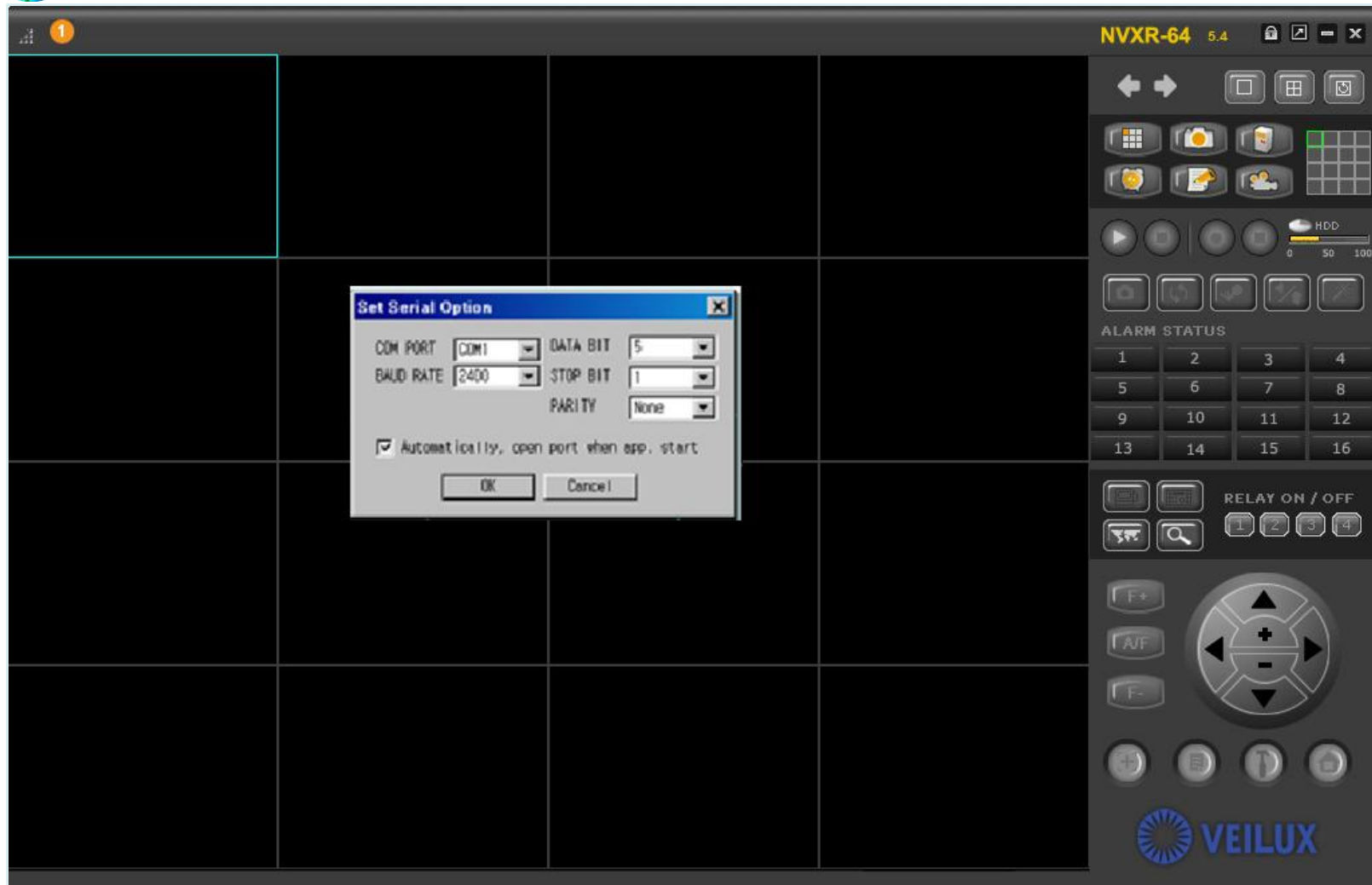
6. When NVR pro is running, do right click on NVR daemon icon of task bar.

8. Choose check box.





1. VIK-USB Installation & Connection with NVR-Pro



Click the Serial Option at the bottom, then the "Set Serial Option" window will Pop-Up.
Then Select COM Port and Baud Rate matching to the same value of Web Keyboard Controller.



Basic Info

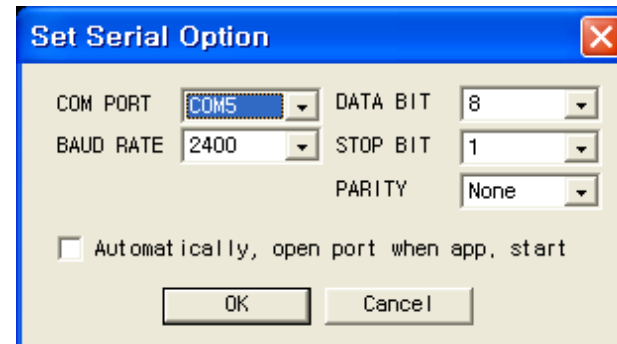
- Model : VIK-USB
- Refer to keyboard setup manual in box.
- It supports PNP(plug & play) feature

Procedure

1. Run NVR-Pro S/W.
2. Right click NVR-Pro tray icon on Windows tray.



3. Select Serial Option.
4. Pop up serial setup window



5. Check COM PORT keyboard connected and set parameters as
 - Baud rate : 2400
 - Data bit : 8
 - Stop bit : 1
 - Parity : none
6. Operate USB keyboard.

How to operate special keys. (for PTZ models)

Open OSD : hold a MENU button during 2 seconds.
SCAN : Click #1 button and then click SCAN button.

* Others keys are the same with normal keyboard



1. VIK-USB Installation & Connection with NVR-Pro



After running NVR-Pro, you can see the NVR DAEMON Icon at the bottom.
Then Click the right button of the mouse.