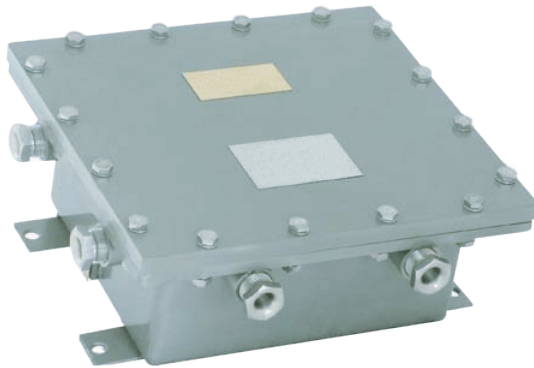




VEILUX®

EX-PROOF CONTROLLER

SVEX-2028E



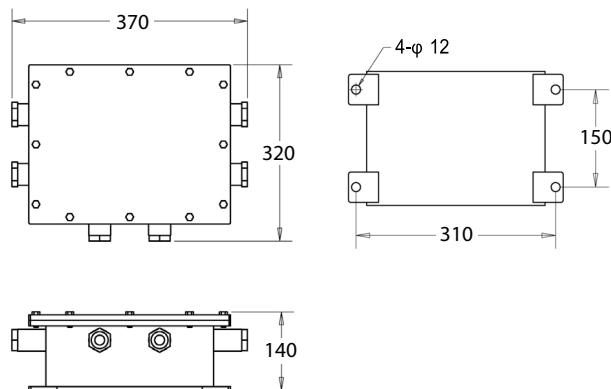
SVEX-2028E is a well-performance monitoring equipment; could be used in explosive and flammable atmospheres to receive orders from main machine and to control the ex-proof pan/tilt and camera.

SVEX-2028E with a multi-protocol decoder, could receive the order from matrix and DVR to realize the control for pan/tilt and lens, and offer control to other equipments such as light and wiper.

SVEX-2028E contain stainless steel material, working under -20°C to $+60^{\circ}\text{C}$ for a longtime stably. Capable of receiving order from public bus data, to connect max 64 decoders.

To set the decoder address, to choose the control protocol and communication speed with 6 cable outlets, connect by ex-proof flexible tube or armored cable. Power supply by 24VAC or 220VAC.

DIMENSION



FEATURES

- Stainless Steel Material
- With Multi-Protocol Decoder Inside
- Optional Address & Signal Speed
- Lens Voltage Optional
- Optional Other Electrical Equipments
- 6-Cable Outlets
- Indoor & Outdoor Installation For All-Weather Use
- IP68



VEILUX®

The Art of Surveillance



VEILUX®

EX-PROOF CONTROLLER

SVEX-2028E

CERTIFICATE

ITEM	SVEX-2028E
Ex-marking	Exd II CT6 (H ₂)
Certificate	CNEx05. 1078
License No.	XK06-123-00251

MECHANICAL

ITEM	SVEX-2028E
Material	Stainless Steel 1Cr18Ni9Ti or 316L
IP	IP68
Inner Size	250mm(L) X 220mm(W) X 110mm(H)
Weight	23Kg
Shipping Weight	26Kg
Outlet Qty	6
Outlet Size	G-3/4"
Installation	Wall Mount / Base / Bracket

ENVIRONMENTAL

ITEM	SVEX-2028E
Air Pressure	86~106KPa
Temperature	-20°C~+60°C
Humidity	≤95%RH (+25°C)

ELECTRICAL

ITEM	SVEX-2028E
Power Supply	220VAC / 24VAC, 50/60Hz
Voltage Range	±10%

PAN/TILT CONTROL OUT	
Qty	1
Switch	4, Control Up / Down / Left / Right
Control Voltage	220VAC / 0.5A or 24VAC / 1A
Power Consumption	30W

LENS CONTROL OUT	
Qty	1
Switch	3, Control Zoom / Focus / Iris
Control Voltage	6VDC~12VDC Adjustable
Aux Switch	2 Continuous Passive Touch Points 220VAC/1A
Preset Input	H/V Value of Pan/Tilt (0~5VDC) Zoom / Focus Value Of Lens (0~5VDC)
Preset Storage	64
Power Output	12VDC / 0.5A, 220VAC / 0.5A
Address Coding	1~128
Communication	RS-485
Communication Dis.	<1.3km
Connection	Connect Host With UTP
Connection Qty	64 Controllers Bus
Protocol	PELCO P/D

Electric Connection	
2-Pin Connector	220VAC Power Input
3-Pin Connector	RS-485 Control Signal Input
5-Pin Connector	Pan/Tilt Control Output
4-Pin Connector	Lens Control Output
6-Pin Connector	2-Pin Power of Preset / 4-Pin Voltage Input of Preset
4-Pin Connector	2 Relay Outputs



VEILUX®

The Art of Surveillance