



VEILUX®

The Art of Surveillance

PRODUCT CATALOG



TABLE OF CONTENT

Contents

Essential IP Series	5
HD Analog Cameras	22
HD Digital Video Recorders.....	28
Explosion-proof Cameras.....	31
Explosion-proof Thermal Cameras	38
Explosion-proof Housings.....	39
Explosion-proof Accessories	42
Explosion-proof Lighting	47
Face Recognition	51
Thermal Scanning.....	52
Thermal Scanning Metal Detector	56
Disinfection Channel	57
References	60

VEILUX

Dear customer,

Here at Veilux, we are grateful for your business and your continued confidence and support. We strive to be able to provide you with the best service and quality in the industry. We are proud to have our product line distributed and installed internationally and across the United States. We have spent time with both current and prospective customers learning their security needs and providing quality solutions for them. This has provided us with an invaluable source of information that we have used to help improve our processes and the level of service that we offer to all of our customers.

We will continue to work hard every day to provide you with the standards of excellence that you have come to rely on.

- Best in the Industry Customer Service
- Innovative and Quality Products
- Training and Support for all of our products
- Professional and Responsive Technical Support
- Dedicated and Knowledgeable Sales Professionals
- Competitive Pricing enabling you to win more business!

Thank you again for all of your continued support throughout the years.

Sincerely,
The Veilux Team

THE ART OF SURVEILLANCE



Security Cameras



ESSENTIAL IP SERIES

Bullet Camera with 2.8-12mm Motorized Varifocal Lens



FEATURES	MODEL NUMBER	VBIP-4-Z-UE	VBIP-5-Z-UE
	FEATURES	Resolution	4 Megapixels
2592 x 1520 @ 20fps			2592 x 1944 @ 20fps
Sensor		1/3" CMOS progressive scan	
IR Cut		ICR	
Compression		Ultra 265 / H.264 / MJPEG	
Number of Streams		Triple stream	
Dynamic Range		D-WDR	
Lens		2.8-12mm Motorized	
IR Range		Up to 30m (98ft) IR range	
Bracket		Built-in	
IP Rating	IP67		

Vandal Dome Camera with 2.8-12mm Motorized Varifocal Lens



FEATURES	MODEL NUMBER	VVIP-4-Z-UE	VVIP-5-Z-UE
	FEATURES	Resolution	4 Megapixels
2592 x 1520 @ 20fps			2592 x 1944 @ 20fps
Sensor		1/3" CMOS progressive scan	
IR Cut		ICR	
Compression		Ultra 265 / H.264 / MJPEG	
Number of Streams		Triple stream	
Dynamic Range		D-WDR	
Lens		2.8-12mm Motorized	
IR Range		Up to 30m (98ft) IR range	
Bracket		Built-in	
IP Rating	IP67		

2MP IR Network Indoor Mini PTZ Motorized Dome Camera



FEATURES	MODEL NUMBER	VPIP-2MIR33X-150-POE-U
	FEATURES	Resolution
1920x1080 @ 60fps		
Sensor		1/2.8" 2 megapixel, progressive scan, CMOS
Day/Night		IR-cut filter with auto switch (ICR)
Compression		Ultra 265 / H.264 / MJPEG
Number of Streams		Triple stream
Dynamic Range		120dB
Lens		4.5 ~ 148.5mm, AF automatic focusing and motorized zoom lens
IR Range		Up to 150m (492ft)
IP Rating		IP66

ESSENTIAL IP SERIES

2MP IR Network Indoor Mini PTZ Motorized Dome Camera



MODEL NUMBER		VPIP-2MIR5X-30-POE-U
FEATURES	Resolution	2 Megapixels
		1920x1080 @ 30fps
	Sensor	1/2.9" progressive scan, CMOS
	Day/Night	IR-cut filter with auto switch (ICR)
	Compression	Ultra 265, H.265, H.264, MJPEG
	Number of Streams	Triple stream
	Dynamic Range	D-WDR
	Lens	2.7~13.5mm, AF automatic focusing and motorized zoom lens
	IR Range	Up to 30m (98ft) IR range
	IP Rating	IP67

4K Mini Fixed Bullet Network Fixed Camera



MODEL NUMBER		VBIP-8-UE
FEATURES	Resolution	8MP
		3840x2160 20fps
	Sensor	1/3", 8 megapixel, progressive scan, CMOS
	Day/Night	IR-cut filter with auto switch (ICR)
	Compression	Ultra 265, H.265, H.264, MJPEG
	Number of Streams	3
	Dynamic Range	120dB
	Lens	2.8mm@F2.0
	IR Range	Up to 30m (98ft) IR range
	IP Rating	IP67

4K Vandal-resistant Network IR Fixed Dome Camera



MODEL NUMBER		VVIP-8-UE
FEATURES	Resolution	8MP
		3840x2160 @ 20fps
	Sensor	1/3", 8 megapixel, progressive scan, CMOS
	Day/Night	IR-cut filter with auto switch (ICR)
	Compression	Ultra 265, H.265, H.264, MJPEG
	Number of Streams	3
	Dynamic Range	120dB
	Lens	2.8mm@F2.0
	IR Range	Up to 30m (98ft) IR range
	IP Rating	IP67

ESSENTIAL IP SERIES



	VPIP-2MIR30X-200	VPIP-3MIR30X-200	VPIP-2MIR37X-200	VPIP-4MIR40X-200	VPIP-5MIR40X-200
Resolution	2MP 1920(H)×1080(V)	3MP 2048(H)×1536(V)	2MP 1920(H)×1080(V)	4MP 2592(H) x 1520(V)	5MP 2560 (H) x 1920(V)
Sensor	1/2.8" Progressive Scan CMOS		1/2" Progressive Scan CMOS	1/2.8" Progressive Scan CMOS	
Min. Illumination	Color: 0.01 Lux @ (F1.2, AGC ON), B/W: 0 Lux @ (IR LED ON)				
WDR	120 dB				
IR Range	Smart IR, Up to 200 m (656.2 ft)				
Focal Length	4.5 ~ 135 mm		6 ~ 222mm	4.98 ~ 199.2mm	
Max. Aperture	F1.6 ~ F4.4		F1.5 ~ F4.8	F1.2 ~ F3.5	
Angle of View	H: 59.8° ~ 2.3°		H: 60° ~ 2°	H: 59.1°~1.8°, V: 38.4°~1.1°	
Optical Zoom	30x		37x	40x	
Digital Zoom	16x				
Focus Control	Auto/Manual				
Pan/Tilt Range	Pan: 0° ~ 360° endless, Tilt: -10° ~ +90°				
Manual Control Speed	Pan: 0.1° ~ 180°/s, Tilt: 0.1° ~ 90°/s				
Preset Speed	Pan: 180°/s, Tilt: 90°/s				
Presets	400				
PTZ Mode	6 Track, 12 Tour, 12 Scan				
Speed Setup	Auto/Manual (0-8)				
Max. Video Resolution	1080P(1920×1080)	3MP (2048×1536)	1080P (1920×1080)	4MP (2592×1520)	5MP (2560×1920)
Streaming Capability	3				
Audio Compression	G.711, RAW_PCM				
Interoperability	ONVIF, SDK, CGI				
Edge Storage	Local PC for instant recording, Micro SD card 256GB				
Auto Tracking	Supported				
Ethernet	1 Ethernet (10/100 Base-T) RJ-45 Connector				
Audio	1ch Input, 1ch Output				
Alarm	7ch Input, 2ch Output				
RS485/ CVBS Output	Supported				
Power Supply	AC24V/Hi-POE (Adapter optional)				
Ingress Protection	IP66, TVS4000V				
Reset Button	Yes (Built-in)				

ESSENTIAL IP SERIES



	VPIP-4MINI-12X-H5	VPIP-5MINI-12X-H5
Resolution	4MP 2592(H) x 1520(V)	5MP 2560(H) x 1920(V)
Sensor	1/2.8" Progressive Scan CMOS	
Min. Illumination	Color: 0.01 Lux @ (F1.2, AGC ON), B/W: 0 Lux @ (IR LED ON)	
WDR	120 dB	
IR Range	Smart IR, Up to 80 m (262.5 ft)	
Focal Length	4.7 ~ 56.4 mm	
Max. Aperture	F1.6 ~ F3.0	
Angle of View	H: 60.9°~6.43°, V: 40.1°~4.1°	
Optical Zoom	12x	
Digital Zoom	16x	
Focus Control	Auto/Manual	
Pan/Tilt Range	Pan: 0° ~ 360° endless, Tilt: -10° ~ +90°	
Manual Control Speed	Pan: 0.1° ~ 180°/s, Tilt: 0.1° ~ 90°/s	
Preset Speed	Pan: 180°/s, Tilt: 90°/s	
Presets	300	
PTZ Mode	6 Track, 12 Tour, 12 Scan	
Speed Setup	Auto/Manual (0-8)	
Max. Video Resolution	4MP (2592×1520)	5MP (2560×1920)
Streaming Capability	3	
Audio Compression	G.711, RAW_PCM	
Interoperability	ONVIF, SDK, CGI	
Edge Storage	Local PC for instant recording, Micro SD card 256GB	
Auto Tracking	Supported	
Ethernet	1 Ethernet (10/100 Base-T) RJ-45 Connector	
Audio	1ch Input, 1ch Output	
Alarm	2ch Input, 1ch Output	
RS485/ CVBS Output	N/A	
Power Supply	DC12V/POE+ (IEEE 802.at)	
Ingress Protection	IP66, TVS4000V	
Reset Button	Yes (Built-in)	

ESSENTIAL IP SERIES



VBIP-2E-N

2MP IR Fixed Lens Bullet Network Camera

Resolution	2MP 1920x1080
Sensor	1/2.8" Progressive Scan CMOS
Lens	2.8mm
Min. Illumination	Color: 0.01 Lux @(F1.2, AGC ON), B/W: 0 Lux @(IR LED ON)
Day/Night	ICR
Storage	Built-in Micro SD slot, up to 256GB
Number of Streams	3
Dynamic Range	WDR
IR Range	Up to 30m (98.4ft)
IP Rating	IP67



VVIP-2E-N

2MP IR Fixed Lens Vandal-proof Dome Network Camera

Resolution	2MP 1920(H)×1080(V)
Sensor	1/2.8" Progressive Scan CMOS
Lens	3.6mm
Min. Illumination	Color: 0.01 Lux @(F1.2, AGC ON), B/W: 0 Lux @(IR LED ON)
Day/Night	ICR
Storage	Built-in Micro SD slot, up to 256GB
Number of Streams	3
Dynamic Range	WDR
IR Range	Up to 30m (98.4ft)
IP Rating	IP67



VVIP-2V-E-N

2MP Vandal-proof Eyeball Network Camera with Varifocal Lens and IR

Resolution	2MP 1920(H)×1080(V)
Sensor	1/2.9" Progressive Scan CMOS
Lens	2.8 ~ 12 mm
Min. Illumination	Color: 0.1 Lux @ (F1.2, AGC ON), B/W: 0 Lux @ (IR LED ON)
Day/Night	Auto(ICR)/Day/Night
Pan/Tilt/Rotation Range	Pan: 0° ~ 360°, Tilt: 0° ~ 90°, Rotation: 0° ~ 360°
Number of Streams	3
Dynamic Range	D-WDR
IR Range	Up to 35m (114.8ft)
IP Rating	IP66



VBIP-2V-E-N

2MP IR Varifocal Lens Bullet Network Camera

Resolution	2MP 1920x1080
Sensor	1/2.9" Progressive Scan CMOS
Lens	2.8 ~ 12 mm
Min. Illumination	Color: 0.1 Lux @ (F1.2, AGC ON), B/W: 0 Lux @ (IR LED ON)
Day/Night	Auto(ICR)/Day/Night
Iris	Fixed Iris
Number of Streams	3
Dynamic Range	D-WDR
IR Range	Up to 35m (114.8ft)
IP Rating	IP67

ESSENTIAL IP SERIES



VVIP-2V-E2-N

2MP Vandal-proof Network Dome Camera with Motorized Lens and IR

Resolution	2MP 1920x1080
Sensor	1/2.8" Progressive Scan CMOS
Lens	2.7~13.5mm
Min. Illumination	Color: 0.01 Lux @(F1.2, AGC ON), B/W: 0 Lux @(IR LED ON)
Day/Night	ICR
Storage	Built-in Micro SD slot, up to 256GB
Number of Streams	3
Dynamic Range	WDR
IR Range	Up to 30m (98.4ft)
IP Rating	IP66



VBIP-2V-E2-N

2MP IR Motorized Bullet Network Camera

Resolution	2MP 1920x1080
Sensor	1/2.8" Progressive Scan CMOS
Lens	2.7~13.5mm Motorized
Min. Illumination	Color: 0.01 Lux @(F1.2, AGC ON), B/W: 0 Lux @(IR LED ON)
S/N Ratio	55dB
Compression	H.264 High/Main/Baseline Profile, MJPEG
Number of Streams	3
Dynamic Range	WDR
IR Range	Up to 40m (66ft)
IP Rating	IP67



VBIP-2V-H5Z-N

2MP Starlight Motorized Network IR Bullet with Ultra H.265 Video Compression

Resolution	2MP 50fps/60fps@1080P(1920x1080)
Sensor	1/2.8" Progressive Scan CMOS
Lens	Motorized lens 2.7-12mm
Min. Illumination	Color: 0.001 Lux@(F1.2,AGC ON) B/W: 0 Lux@(IR LED ON)
Day/Night	ICR
Compression	H.265,H.264,MJPEG
Number of Streams	3
Dynamic Range	WDR>120dB
IR Range	Up to 60m (197ft)
IP Rating	IP67



Customizable Solutions

Find the Perfect System for Any Situation

ESSENTIAL IP SERIES



VVIP-4E-N

4MP Vandal-proof Dome Network Camera with Fixed Lens and IR

Resolution	4MP 2592(H)×1520(V)
Sensor	1/2.8" Progressive Scan CMOS
Lens	2.8mm (4mm optional)
Min. Illumination	Color: 0.05 Lux @ (F1.2, AGC ON), B/W: 0 Lux @ (IR LED ON)
Day/Night	Auto (ICR)
Storage	Built-in Micro SD slot, up to 256GB
Number of Streams	3
Dynamic Range	WDR
IR Range	Up to 30m (98.4ft)
IP Rating	IP67



VVIP-4V-E-N

4MP Vandal-proof Eyeball Network Camera with Varifocal Lens and IR

Resolution	4MP 2560(H)×1440(V)
Sensor	1/3" Progressive Scan CMOS
Lens	2.8 ~ 12 mm
Min. Illumination	Color: 0.1 Lux @ (F1.2, AGC ON), B/W: 0 Lux @ (IR LED ON)
Day/Night	Auto(ICR)/Day / Night
Pan/Tilt/Rotation Range	Pan: 0° ~ 360°, Tilt: 0° ~ 90°, Rotation: 0° ~ 360°
Number of Streams	3
Dynamic Range	D-WDR
IR Range	Up to 35m (114.8ft)
IP Rating	IP66



VBIP-4V-E-N

4MP IR Motorized Bullet Network Camera

Resolution	4MP 2592(H) x 1520(V)
Sensor	1/3" Progressive Scan CMOS
Lens	2.8-12 mm
Min. Illumination	Color: 0.01 Lux @(F1.2, AGC ON), B/W: 0 Lux @(IR LED ON)
Day/Night	Auto (ICR)
Storage	Built-in Micro SD slot, up to 256GB
Number of Streams	3
Dynamic Range	WDR
IR Range	Up to 40m (131ft)
IP Rating	IP67

ESSENTIAL IP SERIES



VBIP-4E2-N

4MP IR Fixed Lens Bullet Network Camera

Resolution	4MP 2592(H)×1520(V)
Sensor	1/2.8" Progressive Scan CMOS
Lens	2.8-12mm
Min. Illumination	Color: 0.05 Lux @ (F1.2, AGC ON), B/W: 0 Lux @ (IR LED ON)
Day/Night	Auto (ICR)
Storage	Built-in Micro SD slot, up to 256GB
Number of Streams	3
Dynamic Range	WDR
IR Range	Up to 30m (98.4ft)
IP Rating	IP67



Universities and Schools
CCTV Solutions for Campuses

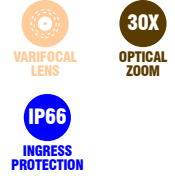
ESSENTIAL IP SERIES



VBIP-12V-H5Z

12MP H.265/H.264 Motorized Network Bullet Camera

Resolution	12MP 4000 x 3000@20fps
Sensor	1/1.7" Progressive Scan CMOS
Lens	4.1-12.8mm Motorized
Min. Illumination	Color :0.009Lux@(F1.2,AGC ON) B&W: 0Lux@(IR LED ON)
Day/Night	ICR
Compression	H.265,H.264,MJPEG
Number of Streams	3
Dynamic Range	D-WDR
IR Range	Up to 80m (262ft)
IP Rating	IP67



VPIP-3MIR30X-H5

3MP Network IR High Speed Pan/Tilt/Zoom Dome 30X

Resolution	4MP HD 3MP(2048x1536)
Sensor	1/2.8" Progressive Scan CMOS
Lens	4.5~135mm P-Iris 30X Optical Zoom, 16X Digital Zoom
Min. Illumination	Color: 0.01 Lux (F2.0, AGC ON) 0 Lux with IR on
Day/Night	IR-cut filter with auto switch (ICR)
Compression	Ultra 265, H.265,H.264,MJPEG
Number of Streams	3
Dynamic Range	120dB
IR Range	Smart IR up to 200m (656ft)
IP Rating	IP66



VPIP-4MINI-12X-H5

4MP Network Mini PTZ Camera

Resolution	4MP 2592x1520/20fps
Sensor	1/3" Progressive Scan CMOS
Lens	2.8-12 mm
Min. Illumination	Color :0.05Lux@ (F1.2,AGC ON); B/W: 0 Lux@ (IR LED ON)
PTZ	Pan: 0°~360° endless, Tilt: -10°~90°
Speed	Preset: Pan: 180°/s, Tilt: 90°/s Manual: Pan: 0.1°~180°/s, Tilt: 0.1°~90°/s
Compression	H.265,H.264,MJPEG
Dynamic Range	WDR >120dB
IR Range	Up to 35m (115ft)
IP Rating	IP66



VSIP-2-H5

2MP 1080P Starlight Network Box Camera

Resolution	2MP 50fps/60fps@1080P(1920 x 1080)
Sensor	1/2.8" Progressive Scan CMOS
Lens	Sold Separately
Min. Illumination	Color:0.001Lux@(F1.2,AGC ON) B/W:0.0001Lux@(F1.2,AGC ON)
Day/Night	ICR
Compression	H.265,H.264,MJPEG
Number of Streams	3
Dynamic Range	WDR>120dB
Auto Back Focus	Supported
Features	WDR, 3D DNR, ROI, Defog, HLC, EIS

ESSENTIAL IP SERIES



VVIP-2V-H5

2MP 1080P Starlight Vandal proof Network IR Dome Camera

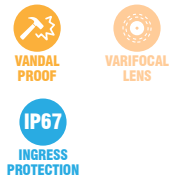
Resolution	2MP 1920 x 1080/60fps
Sensor	1/2.8" Progressive Scan CMOS
Lens	2.7-12mm VF Lens
Min. Illumination	Color: 0.001 Lux@(F1.2,AGC ON) B/W: 0 Lux@(IR LED ON)
Day/Night	ICR
Compression	H.265,H.264,MJPEG
Number of Streams	3
Dynamic Range	WDR>120dB
IR Range	Up to 30m (98ft)
IP Rating	IP67



VVIP-2V-H5Z

2MP Super WDR IR Vandal proof Dome Network Camera with H.265

Resolution	2MP 50/60fps@2MP (1920 x 1080)
Sensor	1/2.8" progressive scan CMOS
Lens	2.7~12mm Motorized Lens
Min. Illumination	Color: 0.001 Lux@(F1.2,AGC ON) B/W: 0 Lux@(IR LED ON)
Day/Night	ICR
Compression	H.265,H.264,MJPEG
Number of Streams	3
Dynamic Range	True WDR >120dB
IR Range	Up to 30m (98ft)
IP Rating	IP67



VVIP-4V-H5Z

4MP 1080P Starlight Vandal proof Network IR Dome Camera

Resolution	4MP 25fps/30fps@4MP (2592 x 1520)
Sensor	1/3" Progressive Scan CMOS
Lens	2.7~12mm Motorized Lens
Min. Illumination	Color: 0.05 Lux@(F1.2,AGC ON) B/W: 0 Lux@(IR LED ON)
Day/Night	ICR
Compression	H.265,H.264,MJPEG
Number of Streams	3
Dynamic Range	WDR>120dB
IR Range	Up to 30m (98ft)
IP Rating	IP67



VFIP-12M

12MP Network Fisheye Camera with IR

Resolution	12MP 4000 x 3000@20fps
Sensor	1/1.7" Progressive Scan CMOS
Lens	1.8mm
Min. Illumination	Color :0.009Lux@(F1.2,AGC ON) B/W: 0 Lux@(IR LED ON)
Day/Night	ICR
Compression	H.265,H.264,MJPEG
Number of Streams	2
Dynamic Range	D-DWR
IR Range	Smart IR Up to 10m (33ft)
IP Rating	IP67

PRO IP SERIES



VTIP-4-PRO-U

4MP Network IR Fixed Turret Camera

Resolution	4 Megapixels 2688 x 1520 @ 30fps
Sensor	1/3" 4MP, progressive scan, CMOS
Lens	2.8mm@F2.0
Min. Illumination	Color: 0.01Lux (F2.0, AGC ON) 0 Lux with IR on
Day/Night	IR-cut filter with auto switch (ICR)
Compression	Ultra 265, H.265, H.264, MJPEG
Number of Streams	3
Dynamic Range	120dB
IR Range	Up to 30m (98ft)
IP Rating	IP67



VDIP-4-PRO-U

4MP Cable-free WDR IR Fixed Dome Network Camera

Resolution	4 Megapixels 2688 x 1520 @ 30fps
Sensor	1/3" 4MP, progressive scan, CMOS
Lens	2.8mm@F2.0
Min. Illumination	Color: 0.01Lux (F2.0, AGC ON) 0 Lux with IR on
Day/Night	IR-cut filter with auto switch (ICR)
Compression	Ultra 265, H.265, H.264, MJPEG
Number of Streams	3
Dynamic Range	120dB
IR Range	Up to 30m (98ft)



VDIP-4-PRO-U

4MP Cable-free WDR IR Vandal Proof Network Camera

Resolution	4 Megapixels 2688 x 1520 @ 30fps
Sensor	1/3" 4MP, progressive scan, CMOS
Lens	2.8 ~ 12mm, AF automatic focusing and motorized zoom lens
Min. Illumination	Color: 0.003 Lux (F1.6, AGC ON) 0 Lux with IR
Day/Night	IR-cut filter with auto switch (ICR)
Compression	Ultra 265, H.265, H.264, MJPEG
Number of Streams	3
Dynamic Range	120dB
IR Range	Up to 30m (98ft)
IP Rating	IP66



VBIP-4-AI-PRO-U

4MP HD Illumination Tracker IR Fixed Bullet Network Camera

Resolution	4 Megapixels 2688 x 1520 @ 30fps
Sensor	1/3" 4MP, progressive scan, CMOS
Lens	2.8mm@F1.6
Min. Illumination	Color: 0.003 Lux (F1.6, AGC ON) 0 Lux with IR on
Day/Night	IR-cut filter with auto switch (ICR)
Compression	Ultra 265, H.265, H.264, MJPEG
Number of Streams	3
Dynamic Range	120dB
IR Range	Up to 40m (131 ft)
Ingress Protection	IP67

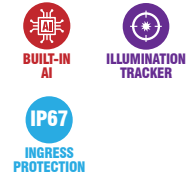
PRO IP SERIES



VVIP-4-AI-PRO-U

4MP HD Illumination Tracker IR Fixed Dome Network Camera

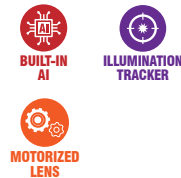
Resolution	4 Megapixels 2688 x 1520 @ 30fps
Sensor	1/3", 4MP, progressive scan, CMOS
Lens	2.8mm@F1.6
Min. Illumination	Color: 0.003 Lux (F1.6, AGC ON) 0 Lux with IR
Day/Night	IR-cut filter with auto switch (ICR)
Compression	Ultra 265, H.265, H.264, MJPEG
Number of Streams	3
Dynamic Range	120dB
IR Range	Up to 30m (98ft)
IP Rating	IP67



VTIP-4-AI-PRO-U

4MP HD Illumination Tracker IR Fixed Turret Network Camera

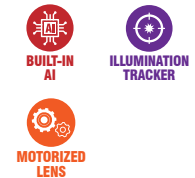
Resolution	4 Megapixels 2688 x 1520 @ 30fps
Sensor	1/3" 4MP, progressive scan, CMOS
Lens	2.8mm@F1.6
Min. Illumination	Color: 0.003Lux (F1.6, AGC ON) 0 Lux with IR on
Day/Night	IR-cut filter with auto switch (ICR)
Compression	Ultra 265, H.265, H.264, MJPEG
Number of Streams	3
Dynamic Range	120dB
IR Range	Up to 30m (98ft)
IP Rating	IP67



VBIP-4Z-AI-PRO-U

4MP HD Illumination Tracker IR Motorized Bullet Network Camera

Resolution	4 Megapixels 2688 x 1520 @ 30fps
Sensor	1/3" 4MP, progressive scan, CMOS
Lens	2.7 ~ 13.5mm, AF automatic focusing and motorized zoom lens
Min. Illumination	Color: 0.002 Lux (F1.2, AGC ON) 0 Lux with IR on
Day/Night	IR-cut filter with auto switch (ICR)
Compression	Ultra 265, H.265, H.264, MJPEG
Number of Streams	3
Dynamic Range	120dB
IR Range	Up to 50m (164ft)
IP Rating	IP67

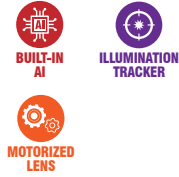


VDIP-4Z-AI-PRO-U

4MP HD Illumination Tracker IR Motorized Dome Network Camera

Resolution	4 Megapixels 2688 x 1520 @ 30fps
Sensor	1/3" 4MP, progressive scan, CMOS
Lens	2.7 ~ 13.5mm, AF automatic focusing and motorized zoom lens
Min. Illumination	Color: 0.002Lux (F1.2, AGC ON) 0Lux with IR on
Day/Night	IR-cut filter with auto switch (ICR)
Compression	Ultra 265, H.265, H.264, MJPEG
Number of Streams	3
Dynamic Range	120dB
IR Range	Up to 40m (131 ft)
Ingress Protection	IP67

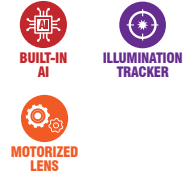
PRO IP SERIES



VDIP-4Z-AI-PRO-U

4MP HD Illumination Tracker IR Motorized Turret Network Camera

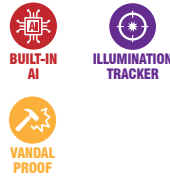
Resolution	4 Megapixels 2688 x 1520 @ 25fps
Sensor	1/3" 4MP, progressive scan, CMOS
Lens	2.7 ~ 13.5mm, AF automatic focusing and motorized zoom lens
Min. Illumination	Color: 0.002Lux (F1.2, AGC ON) 0Lux with IR on
Compression	Ultra 265, H.265, H.264, MJPEG
Number of Streams	3
Dynamic Range	120dB
IR Range	Up to 40m (131ft)
IP Rating	IP67



VBIP-8Z-AI-PRO-U

8MP HD Illumination Tracker IR Motorized Bullet Network Camera

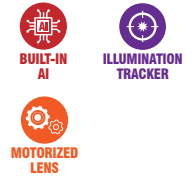
Resolution	8 Megapixels 3840 x 2160 @ 20fps
Sensor	1/2.8" 8MP progressive scan, CMOS
Lens	2.8 ~ 12mm, AF automatic focusing and motorized zoom lens
Min. Illumination	Color: 0.003 Lux (F1.6, AGC ON) 0 Lux with IR on
Compression	Ultra 265, H.265, H.264, MJPEG
Number of Streams	3
Dynamic Range	120dB
IR Range	Up to 50m (164ft)
IP Rating	IP67



VVIP-8Z-AI-PRO-U

8MP Intelligent Illumination Tracker IR Vandal Proof Motorized Dome Camera

Resolution	8 Megapixels 3840 x 2160 @ 20fps
Sensor	1/2.8" 8MP, progressive scan, CMOS
Lens	2.8 ~ 12mm, AF automatic focusing and motorized zoom lens
Min. Illumination	Color: 0.003 Lux (F1.6, AGC ON) 0 Lux with IR
Compression	Ultra 265, H.265, H.264, MJPEG
Number of Streams	3
Dynamic Range	120dB
IR Range	Up to 40m (131 ft)
IP Rating	IP67



VDIP-8Z-AI-PRO-U

8MP HD Illumination Tracker IR VF Motorized Turret Network Camera

Resolution	8 Megapixels 3840 x 2160 @ 20fps
Sensor	1/2.8" 8MP, progressive scan, CMOS
Lens	2.8 ~ 12mm, AF automatic focusing and motorized zoom lens
Min. Illumination	Color: 0.003 Lux (F1.6, AGC ON) 0 Lux with IR
Compression	Ultra 265, H.265, H.264, MJPEG
Number of Streams	3
Dynamic Range	120dB
IR Range	Up to 40m (131 ft)
Ingress Protection	IP67



VBIP-8-AI-PRO-U

8MP HD Fixed Active Deterrence Bullet Network Camera

Resolution	8 Megapixels 3840 x 2160 @ 20fps
Sensor	1/2.7" 8MP progressive scan, CMOS
Lens	2.8mm@F2.0
Min. Illumination	Color: 0.01 Lux (F2.0, AGC ON) 0 Lux with IR on
Compression	Ultra 265, H.265, H.264, MJPEG
Number of Streams	3
Dynamic Range	120dB
IR Range	Up to 30m (98ft)
IP Rating	IP67

NETWORK RECORDERS

Essential Series



FEATURES	MODEL NUMBER	VX-NVR16-16POE-4H-U	VX-NVR32-16POE-4H-U
	IP Video Input	16 ch	32 ch
	Two-way Audio Input	1 ch, RCA	
	Remote Users	128	
	Recording Resolution	8MP/6MP/5MP/4MP/3MP/1080p/960p/720p/D1/2CIF/CIF	
	Audio Output	1 ch, RCA	
	SATA	4 SATA interfaces	
	Capacity	Up to 14TB for each disk	
	Network Interface	1 RJ-45 10M/100M/1000M self-adaptive Ethernet Interface	
	USB Interface	Front panel: 1 x USB2.0, Rear panel: 1 x USB3.0	
	Serial Interface	1 x RS485	
	Alarm In	16 ch	
	Alarm Out	4 ch	
Max Power	Max 30W for single port Max 240W in total		



FEATURES	MODEL NUMBER	VX-NVR-8-POE-2H-H5
	IP Video Input	8ch
	Two-way Talk	1ch MIC in, 1ch Audio line out
	POE Ports	8ch
	Recording Resolution	8MP/6MP/5MP/4MP/3MP/1080P/720P/D1 & etc.
	Audio Input/Output	1ch MIC in, 1ch Audio line out
	SATA	2 SATA Ports
	Capacity	Up to 8TB for each HDD
	Network Interface	1 RJ45 10M/100M
	USB Interface	2 ports (USB 2.0 x2)
	Interoperability	ONVIF, SDK, CGI
	Alarm In	8ch
	Alarm Out	1ch
Network Function	HTTP, HTTPS, TCP/IP, IPv4, UPnP, UDP, RTSP, SMTP, NTP, DNS, DHCP, P2P, IP Filter, DDNS, 802.1X, SNMP	
Power	DC48V/2.5A Consumption: < 5W (without HDD)	

NETWORK RECORDERS

Essential Series



FEATURES	MODEL NUMBER	VX-NVR-16-2H-H5	VX-NVR-16-POE-2H-H5
	IP Video Input	16 ch	
	POE	-	16ch 100Mbps, IEEE802.3af Max Power: 120W
	Two-way Audio Input	1ch MIC in	
	Max. Users	9	
	Recording Resolution	8MP/6MP/5MP/4MP/3MP/1080P/720P/D1 & etc.	
	Audio Output	1ch Audio line out	
	SATA	2 SATA Ports	
	Capacity	up to 8TB for each HDD	
	Network Interface	2 RJ-45 port (10M/100Mbps)	
	USB Interface	2 ports (USB 2.0 x2)	
	Serial Interface	HTTP, HTTPS, TCP/IP, IPv4, UPnP, UDP, RTSP, SMTP, NTP, DNS, DHCP, P2P, IP Filter, DDNS, 802.1X, SNMP	
	Alarm In	8CH	
	Alarm Out	1	
Max Power	DC12V/3A Consumption: <5W (w/o HDD)	AC100-240V Consumption: <5W (w/o HDD)	



FEATURES	MODEL NUMBER	VX-NVR-32-H5
	IP Video Input	32 ch
	POE	-
	Audio Input	1ch
	In/Out Bandwidth	256Mbps
	Recording Resolution	8MP/6MP/5MP/4MP/3MP/1080P/720P
	Audio Output	1ch
	SATA	8 HDD Slots
	Capacity	Up to 6TB for each disk
	Network Interface	2 RJ-45 port (10M/100Mbps)
	USB Interface	2 ports (USB 2.0 x2)
	Network Interface	1 RJ45 10M/100M/1000M
	Alarm In	16ch
	Alarm Out	4ch
Mount	Standalone	
Power	AC110/220V	

NETWORK RECORDERS

Essential Series



FEATURES	MODEL NUMBER	VX-NVR-32-16POE-H5
	IP Video Input	32 ch
	POE	16ch 100Mbps, IEEE802.3af Max Power: 120W
	Audio Input	1ch
	In/Out Bandwidth	256Mbps
	Recording Resolution	8MP/6MP/5MP/4MP/3MP/1080P/720P
	Audio Output	1ch
	SATA	4 HDD Slots
	Capacity	Up to 10TB for each disk
	Network Interface	2 RJ-45 port (10M/100Mbps)
	USB Interface	2 ports (USB 2.0 x2)
	Network Interface	2 RJ45 10M/100M/1000M
	Alarm In	2ch
	Alarm Out	2ch
Mount	Rack Mount	
Power	AC110/220V	

Professional Series



FEATURES	MODEL NUMBER	VPRO-NVR-64RR-16H-U	VPRO-NVR-128RR-16H-U
	IP Video Input	64 ch	128 ch
	Two-way Audio Input	1 ch, BNC	
	Remote Users	128	
	Recording Resolution	12MP/8MP/6MP/5MP/4MP/3MP/1080p/960p/720p/D1/2CIF/CIF	
	Audio Output	1 ch, BNC	
	Decoding Format	Ultra 265, H.265, H.264	
	SATA	16 SATA interfaces	
	Capacity	Up to 10TB for each HDD	
	eSATA	1 eSATA interface	
	mini SAS	2 mini SAS ports	
	Network Interface	4 RJ-45 10M/100M/1000M adaptive Ethernet Interface 2 1000M SFP Ethernet Interface	
	USB Interface	Rear panel: 4 x USB3.0	
	Serial Interface	1 x RS232, 1 x RS485	
Alarm In	24 ch		
Alarm Out	8 ch		
Network Interface	4 RJ-45 10M/100M/1000M adaptive Ethernet Interface 2 1000M SFP Ethernet Interface		

HD Analog Cameras



HD ANALOG DOME CAMERAS



VV-2HDIR36V

2MP HD Vandal Proof IR Dome Camera with Varifocal Lens

Resolution	2 Megapixels Digital: 1920Hx1080P, Analog: 1300 TVL
Sensor	1/2.8" 2.4 Megapixel Sony CMOS Sensor
Lens	2.8-12mm Varifocal Lens
Min. Illumination	0.003 Lux (Color) (0 Lux IR LED ON)
Day/Night	Auto/Color/B&W/Ext
IR Range	40m Indoor/30m Outdoor
Video Out	AHD/TVI/CVI/CVBS
Output	TVI (Default)
IP Rating	IP68



VVT-2MIR25SL

2MP HD IR Metal Vandal Dome Camera with Starlight

Resolution	2 Megapixels 1920 x 1080
Sensor	1/2.8" IMX307 CMOS 2.0M+FH8550M
Lens	2.8mm Fixed
Min. Illumination	0.0001 Lux (F1.2)
Day/Night	Auto, Color, B/W, Ext
IR Range	15m
Video Out	AHD/TVI/CVI/CVBS
Default Output	TVI



VV-2HDIR36V-TVI

2MP High Resolution Vandal Proof Varifocal IR Dome Camera

Resolution	2 Megapixels 1984 x 1225
Sensor	1/2.8" 2.4MP Sony CMOS Sensor
Lens	2.8-12mm
Min. Illumination	Color: 1.0 lux, BW: 0.5 lux
Day/Night	Auto/Color/B&W/Ext
IR Range	40m Indoor/30m Outdoor
Video Out	TVI



VV-2HDIR24-TVI

2MP HD Vandal Proof IR Fixed Lens Turret Camera

Resolution	2 Megapixels 1984 x 1225
Sensor	1/2.8" 2.4 MP Sony CMOS Sensor
Lens	3.6mm Fixed Lens
Min. Illumination	0.5 Lux (Color) (0 Lux IR LED ON)
Day/Night	Auto/Color/B&W/Ext
IR Range	30m Indoor/20m Outdoor
Video Out	TVI

HD ANALOG BULLET CAMERAS



VBT-2MIR40ZSL

2MP Motorized Infrared Outdoor Bullet Camera With Starlight

Resolution	2MP 1920 x 1080
Sensor	1/2.8" IMX 307 CMOS 2.0M+FH8550M
Lens	2.8-12mm Motorized Lens
Min. Illumination	0.0001 Lux (F1.2)
Day/Night	Auto, Color, B/W, Ext
IR Range	Up to 40m (131ft)
Video Out	AHD/TVI/CVI/CVBS
Default Output	TVI
IP Rating	IP68



**MOTORIZED
LENS**



**STARLIGHT
ILLUMINATION**



**INGRESS
PROTECTION**



HD ANALOG BULLET CAMERAS



VBT-2MIR40ZSL

2MP HD Motorized Infrared Outdoor Bullet Camera with Starlight

Resolution	2 Megapixels 1920 x 1080
Sensor	1/2.8" IMX 307 CMOS 2.0M+FH8550M
Lens	2.8-12mm motorized lens
Min. Illumination	0.0001 Lux (F1.2)
Day/Night	Auto, Color, B/W, Ext
IR Range	40m (131ft)
Video Out	TVI
IP Rating	IP66



VB-2HDIR42V-TVI

2.4MP with IR Bullet Camera

Resolution	2 Megapixels 1920 x 1080
Sensor	1/2.8" 2.4 Mega Pixel Sony CMOS Sensor
Lens	2.8-12mm TDN DC Iris Varifocal Lens
Min. Illumination	0.5 Lux (Color) (0 Lux IR LED ON)
Day/Night	ICR
IR Range	115-131 feet (35-40 meters)
Video Out	TVI
IP Rating	IP66



VB-4HDIR42V-TVI

4MP HD TVI IR Bullet Camera

Resolution	4 Megapixels 2688(H) x 1520(V), 4.1MP
Sensor	1/2.8" 4 Mega Pixel Sony CMOS Sensor
Lens	2.8-12mm TDN DC Iris Varifocal Lens
Min. Illumination	0.5 Lux (Color) (0 Lux IR LED ON)
Day/Night	ICR
IR Range	115-131 feet (35-40 meters)
Video Out	TVI
IP Rating	IP66



VB-2HDIR72V-4N1

2.4MP 4-in-1 IR Bullet Camera

Resolution	2 Megapixels Digital: 1920Hx1080P, 25/30 FPS Analog: 1200 TVL
Sensor	1/2.9" 2.4 Mega Pixel Sony CMOS Sensor
Lens	2.8-12mm TDN Electric DC Iris Varifocal Lens
Min. Illumination	0.003 Lux (Color) (0 Lux IR LED ON)
Day/Night	ICR
IR Range	70-80 meters
Video Out	TVI/AHD/CVI (1080P) & CVBS 960H
IP Rating	IP66

HD ANALOG BULLET CAMERAS



VB-2HDIR42V-4N1

2.4MP 4-in-1 IR Bullet Camera

Resolution	2.4 Megapixels 1920Hx1080P, 25/30fps
Sensor	1/2.9" 2.4 Mega Pixel Sony CMOS Sensor
Lens	2.8-12mm TDN Electric DC Iris Varifocal Lens
Min. Illumination	0.003 Lux (Color) (0 Lux IR LED ON)
Day/Night	Auto/ Color/ (B&W)/ Ext (OSD switch)
IR Range	115-131 feet (35-40 meters)
Video Out	TVI/AHD/CVI (1080P) & CVBS 960H
IP Rating	IP66



VB-4HDIR30-TVI

4MP HD Bullet Camera with IR

Resolution	2.4 Megapixels 2688(H)×1520(V), 4.1MP
Sensor	1/2.8" 4 Mega Pixel Sony CMOS Sensor
Lens	3.6 mm Fixed Lens
Min. Illumination	0.5 Lux (Color) (0 Lux IR LED ON)
Day/Night	ICR
IR Range	Indoor 35m/Outdoor 25m
Video Out	TVI
IP Rating	IP66



VB-2HDIR72V-TVI

2.4MP HD TVI Bullet Camera with IR

Resolution	2.4 Megapixels 1920Hx1080P
Sensor	1/2.8" 2 Mega Pixel Sony CMOS Sensor
Lens	2.8-12mm Varifocal Lens (6-22 mm, optional)
Min. Illumination	0.5 Lux (Color) (0 Lux IR LED ON)
Day/Night	Auto/Color/B&W/Ext
IR Range	70-80 meters
Video Out	TVI
IP Rating	IP66



VB-4HDIR72V-TVI

4MP HD TVI Bullet Camera with IR

Resolution	4.1 Megapixels 2688(H)×1520(V), 4.1MP
Sensor	1/2.8" 4 Mega Pixel Sony CMOS Sensor
Lens	2.8-12mm TDN DC Iris Varifocal Lens
Min. Illumination	0.5 Lux (Color) (0 Lux IR LED ON)
Day/Night	Auto/Color/B&W/Ext
IR Range	70-80 meters
Video Out	TVI
IP Rating	IP66

HIGH DEFINITION ANALOG

HD ANALOG BULLET CAMERAS



VB-2HDIR30-TVI

2MP HD TVI Bullet Camera with Fixed Lens and IR

Resolution	2MP Digital: 1920Hx1080P, Analog: 1200 TVL
Sensor	1/2.8" 2.4MP Sony CMOS Sensor
Lens	3.6 mm Fixed Lens
Min. Illumination	0.5 Lux (Color) (0 Lux IR LED ON)
Day/Night	Auto/ Color/ B&W/ Ext
IR Range	Indoor 25m/ Outdoor 20m
Video Out	TVI
IP Rating	IP66



HD ANALOG BOX CAMERAS



VS-2HD-TVI

2.4 Megapixel TVI Box Camera

Resolution	2.4MP Digital : 1920Hx1080P, Analog : 1280H
Sensor	1/2.8" 2.4 MP SONY CMOS
Lens	Sold Separately
Min. Illumination	Color: 1.0 lux , BW: 0.5 lux
Day/Night	Auto/Color/B&W/Ext
IR Range	N/A
Video Out	TVI, CVBS
IP Rating	IP54



HIGH DEFINITION ANALOG

HD ANALOG PTZ CAMERAS



30X
OPTICAL
ZOOM

16X
DIGITAL
ZOOM

IP66
INGRESS
PROTECTION

VP-TVI-2MIR30X

2MP HD TVI Pan Tilt Zoom Dome Camera with 30x Optical Zoom and IR

Resolution	2MP 3270K (1920x1080)
Sensor	1/3" CMOS Sensor
Lens	4mm-120mm, 30x optical Zoom
Zoom Speed	Approx. 3.0s (Optical Wide-Tele)
Angle of View	58°-1.7° (Wide-Tele)
Min Working Distance	10mm-1500mm (Wide-Tele)
Optical Zoom	30X
Digital Zoom	16x
Pan Range	360° endless
Pan Speed	Manual Speed: 0.1°-250°/s, Preset Speed: 300°/s
Tilt Range	-5°-90° (Auto Flip)
Tilt Speed	Manual Speed: 0.1°-150°/s, Preset Speed: 200°/s
Min. Illumination	Color: 0.2 Lux@ F1.6, AGC On; B/W: 0.02 Lux@ F1.6, AGC On
IR Range	394 ft (120m)
Video Out	TVI
IP Rating	IP66



30X
OPTICAL
ZOOM

16X
DIGITAL
ZOOM

IP66
INGRESS
PROTECTION

VP-TVI-2M30X

2MP HD TVI Pan Tilt Zoom Dome Camera with 30x Optical Zoom

Resolution	2MP 3270K (1920x1080)
Sensor	1/3" CMOS Sensor
Lens	4mm-120mm, 30x
Zoom Speed	Approx. 3.0s (Optical Wide-Tele)
Angle of View	58°-1.7°(Wide-Tele)
Min Working Distance	10mm-1500mm (Wide-Tele)
Optical Zoom	30X
Digital Zoom	16x
Pan Range	360° endless
Pan Speed	Manual Speed: 0.1°-250°/s, Preset Speed: 300°/s
Tilt Range	-5°-90° (Auto Flip)
Tilt Speed	Manual Speed: 0.1°-150°/s, Preset Speed: 200°/s Proportional Zoom
Min. Illumination	Color: 0.2 Lux@ F1.6, AGC on; B/W: 0.02 Lux@ F1.6, AGC On
Video Out	TVI
IP Rating	IP66

HIGH DEFINITION ANALOG

HD DIGITAL VIDEO RECORDERS



- 16CH
**16 CHANNEL
RECORDER**
- 6HDD
**HARD DRIVE
CAPACITY**
- 2
eSATA
**eSATA
CAPACITY**

VR-5B-16H-4

Deluxe 16 Channel DVR

Video Input	16 BNC
Video Input Resolution	8MP, 4MP, 3MP, 2MP, 960H
Video Output Resolution	4K, FHD, SXGA, XGA
Recording Speed	15fps/ch (4MP), 30fps/ch (2MP)
Audio Input	16RCA
Audio Output	1 HDMI, 1 RCA
Network Interface	2 x Ethernet 10/100/1G
Interface Sensor I/O	16/4 - NC/NO
Compression	H.265, H.264, JPEG
Network Speed	10fps/ch (4MP), 20fps/ch (2MP)
Storage	6 HDD, 2 eSATA
OS	Embedded Linux (Built-in Flash Memory)
Pre/Post-Alarm	5sec/5sec~5min
Recording Mode	Continuous, Event, Schedule
Backup Type	Video (RMS, AVI), Capture (JPEG), Log List, Setup Data
User	15 Users (Admin, User1 ~User14)
ONVIF	ONVIF Profile S
Power	AC 100 ~ 250V, 50/60 Hz
Power Consumption	80 Watts
Weight	8kg

VR-5B-8S-4/VR-5B-16S-4

Professional Digital Video Recorders



- 8CH
**8 CHANNEL
RECORDER**
- 16CH
**16 CHANNEL
RECORDER**
- 3HDD
**HARD DRIVE
CAPACITY**
- 1
eSATA
**eSATA
CAPACITY**

	VR-5B-8S-4	VR-5B-16S-4
Video Input	8 BNC	16 BNC
Video Input Resolution	8MP, 4MP, 3MP, 2MP, 960H	
Video Output Resolution	4K, FHD, SXGA, XGA	
Recording Speed	15fps/ch(4MP), 30fps/ch(2MP)	
Audio Input	8RCA	16RCA
Audio Output	1 HDMI, 1 RCA	
Network Interface	2 x Ethernet 10/100/1G	
Interface Sensor I/O	8/2 - NC/NO	16/4 - NC/NO
Compression	H.265, H.264, JPEG	
Network Speed	10fps/ch (4MP), 20fps/ch (2MP)	
Storage	3 HDD, 1 eSATA	
OS	Embedded Linux (Built-in Flash Memory)	
Pre / Post-Alarm	5sec/5sec~5min	
Recording Mode	Continuous, Event, Schedule	
Backup Type	Video (RMS, AVI), Capture (JPEG), Log List, Setup Data	
User	15 Users (Admin, User1 ~User14)	
ONVIF	ONVIF Profile S	
Power	12V/5A	
Power Consumption	60 Watts	
Weight	4kg	

HD DIGITAL VIDEO RECORDERS

VR-5B-8E-4/VR-5B-16E-4

Professional Digital Video Recorders



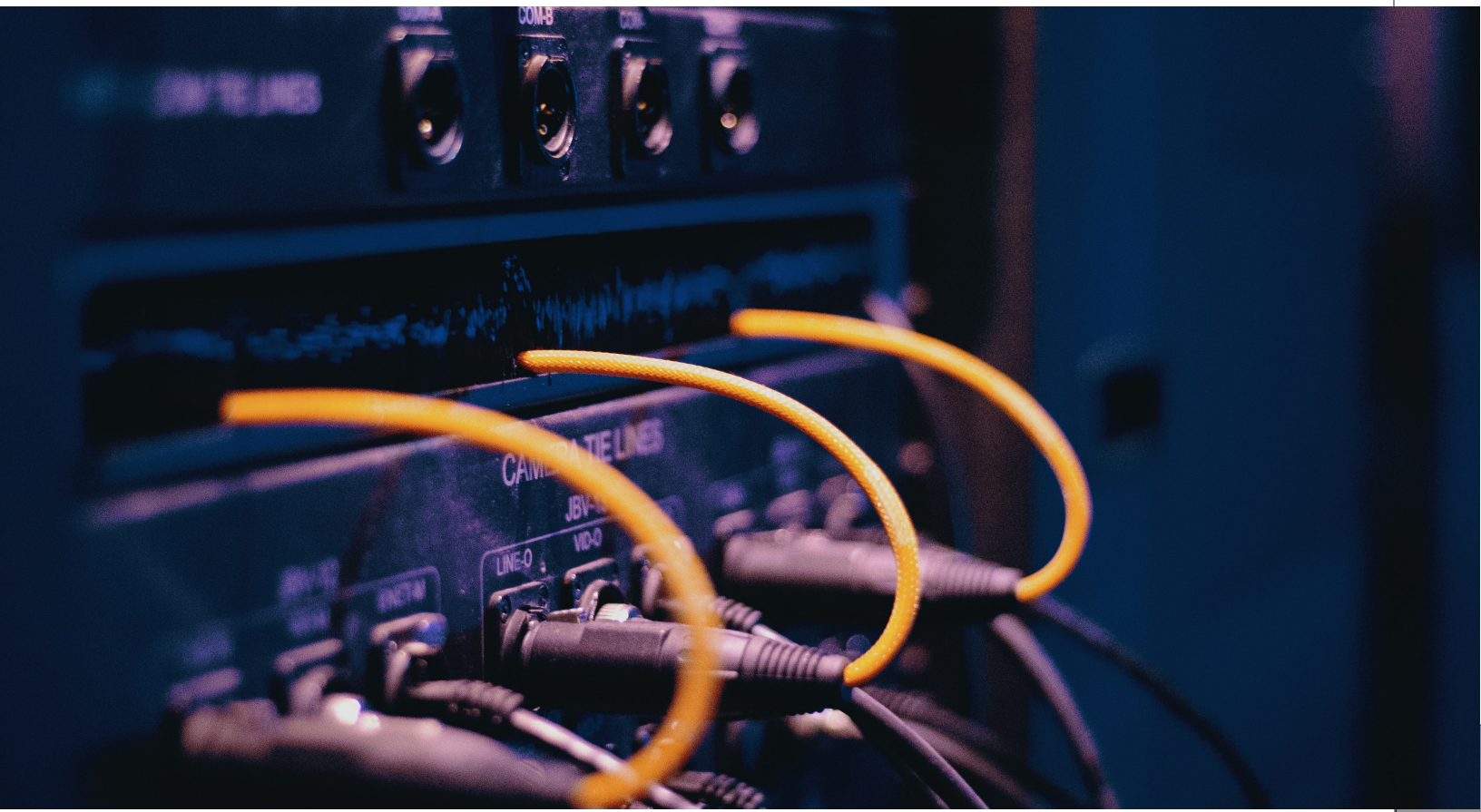
8CH
8 CHANNEL
RECORDER

16CH
16 CHANNEL
RECORDER

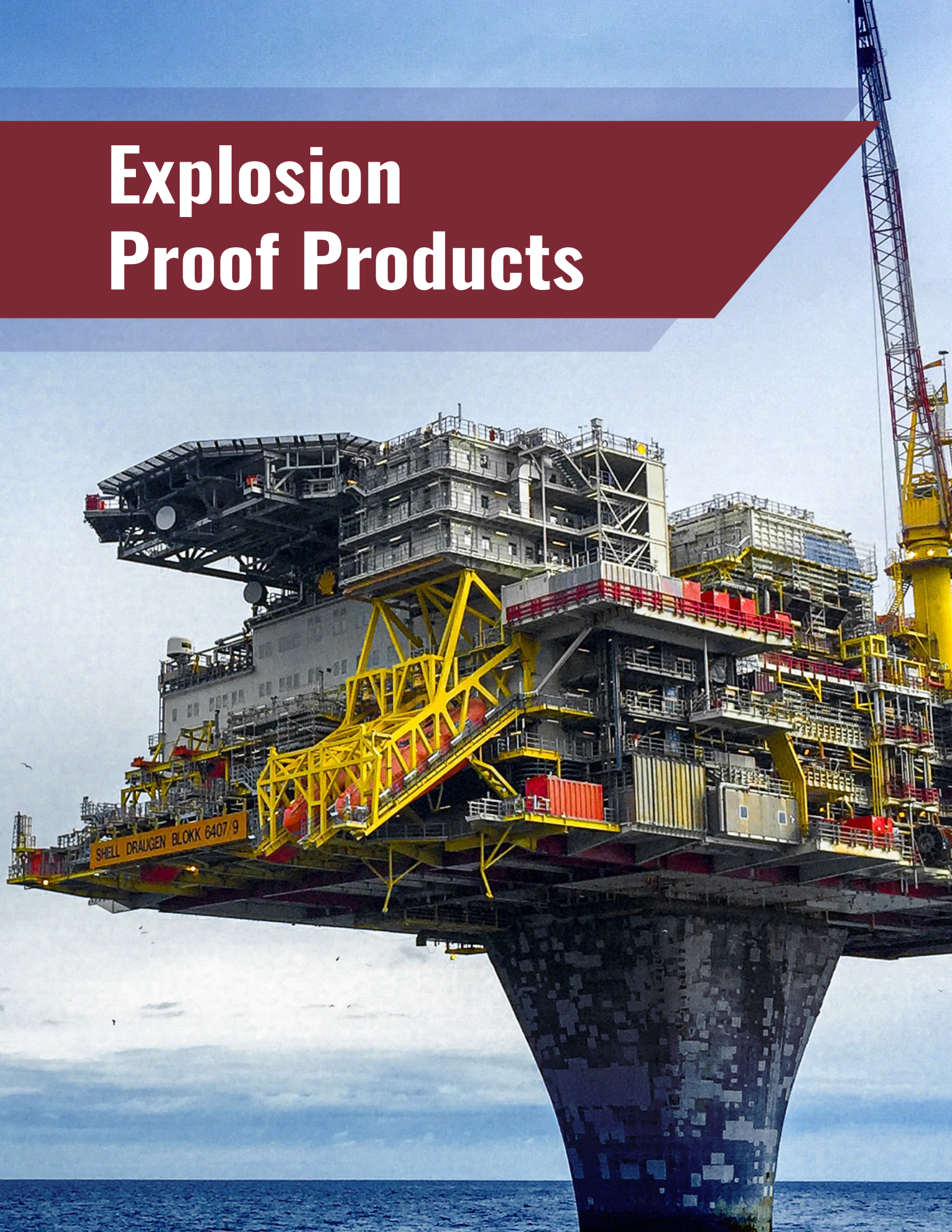
2HDD
HARD DRIVE
CAPACITY

1
eSATA
eSATA
CAPACITY

	VR-5B-8E-4	VR-5B-16E-4
Video Input	8 BNC	16 BNC
Video Input Resolution	8MP, 4MP, 3MP, 2MP, 960H	
Video Output Resolution	4K, FHD, SXGA, XGA	
Recording Speed	15fps/ch (4MP), 30fps/ch (2MP)	
Audio Input	4RCA	
Audio Output	1 HDMI, 1 RCA	
Network Interface	2 x Ethernet 10/100/1G	
Interface Sensor I/O	4/1 - NC/NO	
Compression	H.265, H.264, JPEG	
Network Speed	10fps/ch (4MP), 20fps/ch (2MP)	
Storage	2 HDD or (1 HDD + 1 eSATA)	
OS	Embedded Linux (Built-in Flash Memory)	
Pre/Post-Alarm	5sec/5sec~5min	
Recording Mode	Continuous, Event, Schedule	
Backup Type	Video (RMS, AVI), Capture (JPEG), Log List, Setup Data	
User	15 Users (Admin, User1 ~User14)	
ONVIF	ONVIF Profile S	
Power	12V/3.3A	
Power Consumption	40 Watts	
Weight	3kg	



Explosion Proof Products



EXPLOSION-PROOF CAMERAS

SVEX-Q25-K

ATEX Certificated Stainless Steel Explosion-proof Camera



Features

- Adopt SONY 1/3" CMOS Sensor CCD, resolution up to 1280x960 px
- High quality IR lamp, long service life, low power consumption, lights up to 30 meters
- Window glass surface is treated with a nano-technology process which strengthens the atomic structure of the glass
- Efficient light transmittance and a oil/dust/water repellent surface
- Engineered to dissipate heat this camera can work continuously for an extended period
- Designed with Anti-shock technology to withstand minor bumps and falls
- Small size and light weight, this camera is specifically designed for the vehicles that transport dangerous goods or small areas.
- Made of 304 or 316L stainless steel it is made to withstand highly corrosive or highly explosive environments

Dimensions



CERTIFICATE	
Ex-Marking	ATEX II 2G Ex d IIC T6 Gb II 2D Ex tb IIIC IP68 T80 Db
CAMERA	
Imaging Sensor	1/3 Sony Super HAD CCD II
Signal System	PAL
Resolution Ratio	700TVL
Minimal Illumination	0.01Lux@F1.4, IR lamp Auto-open when <0 Lux
Lens Specifications	4mm, 6mm (optional)
Day/Night	Auto switch (ICR)
BLC Backlight Compensation Method	On/off
Video Output	CVBS/1.0Vp-p/75Ω
Electronic Shutter	AUTO/ 1/50 (1/60) -1/100,000sec
SNR	> 50db
The White Balance	AUTO
IR LAMP	
IR Distance	10-30M (optional)
IR Switch	Auto open <0Lux
Wavelength	850nm
GENERAL	
Working Temperature	-40°C ~ 60°C
Relative Humidity	≤95% (+25°C)
Atmospheric Pressure	80kpa~106 kpa
Supply Voltage	DC12V
Suitable Environment	Explosive gas, highly combustible dust and highly corrosive environments
Material	304 or 316L stainless steel
Inlet Hole Specifications	14 x 1.5 x 1 (mm)
External Dimensions	140 x 92 x 104 (mm)
Installation Method	Fixed Bracket, Pillar Base

EXPLOSION-PROOF CAMERAS

SVEX-B25Z-Z

Explosion and Corrosion Proof 2MP or 4MP Bullet Camera with Infrared Light



Ex-proof Mark	Exd II CT6 Gb/ Ex tD A21 IP68 T80°C
Hazardous Location Classification	Class I Div I
Application	Gas zone 1, 2; dust zone 21, 22
Ingress Protection	IP68
Housing Material	Stainless Steel 304 or 316L
Image Sensor	1/2.7" Progressive Scan CMOS
Max. Image Resolution	2.0 megapixel
Min. Illumination	0.01Lux @(F1.6,AGC ON), 0 Lux with IR
Shutter	Auto/ Manual, 1/100,000 sec
Lens	2.8 - 12 mm, motorized lens

SVEX-Q25-Z

Explosion-proof Smart CCTV Camera with Light



Ex-proof mark	Exd II CT6 Gb/ Ex tD A21 IP68 T80°C
Hazardous Location Classification	Class I Div I
Application	Oil tank, dangerous goods vehicle, marine vessel
Ingress Protection	IP68
Housing Material	Stainless Steel 304 or 316L
Image Sensor	1/3" Progressive Scan CMOS
Horizontal Resolution	1920x 1080
Min. Illumination	0.01Lux @ (F1.2, AGC ON), 0 Lux with IR
Shutter	1/3 sec to 1/100,000 sec
Lens	4mm (6mm optional)
Light Night Vision	0-30m

SVEX-T400B-18Z

ATEX Certified Explosion-proof Motorized Bullet Camera



Ex-proof Mark	ATEX II 2G Ex d IIC T6 Gb II 2D Ex tb IIIC IP68 T80°C Db
Hazardous Location Classification	
Lens	4mm (6mm optional)
Horizontal Resolution	1920x 1080
Min. Illumination	0.01Lux @ (F1.2, AGC ON), 0 Lux with IR
Horizontal Resolution	1920x 1080
Min. Illumination	0.01Lux @ (F1.2, AGC ON), 0 Lux with IR
Housing Material	Stainless Steel 304 or 316L
Ingress Protection	IP68

EXPLOSION-PROOF CAMERAS

SVEX-Q70-ZN

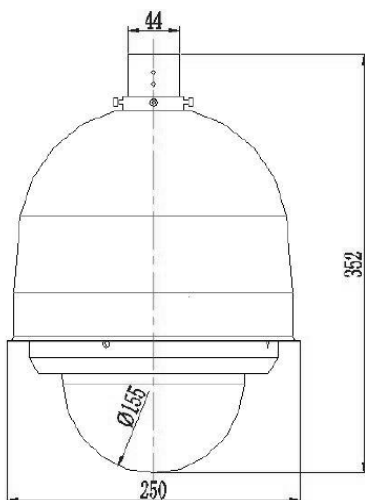
2MP Explosion-proof Camera w/33x



Features

- Highest protection: IP68
- Class 1 Div 2
- Double ex-proof marking: EX d & Ex tD
- Wide voltage: AC24V, AC100-240V
- Stainless steel 304/ 316L housing
- Intelligent telephoto speed limits
- 360° endless Auto tracking
- 300 points patrol preset
- Wall/ ceiling mounted version
- Holds up to a 5inch - 6inch brand dome camera

Dimensions



CERTIFICATIONS	Explosive Marking	Ex d II CT6 Gb/ Ex tD A21 IP68 T80° C
CAMERA	Hazardous Location Classification	Class 1 Div 2
	Certificate	CNEx15.2504X
	Sensor	1/2.8" Progressive Scan CMOS
	Resolution	1920(H) x 1080(V)
	Minimum Illumination	Color: 0.05Lux@(F1.6, AGC on), B/W: 0.01Lux@(F1.6, AGC on)
	White Balance	Auto/Manual/ATW/Indoor/Outdoor/Daylight lamp/Sodium lamp
	AGC	Auto/Manual
	Shutter	1-1s to 1/30,000s
	Day & Night	IR Cut Filter
	Digital Zoom	16x
	Privacy Masking	8 privacy masks programmable
	Auto Focus	Auto/Semi-automatic/Manual
	Features Supported	3D DNR, BLC, D-WDR, HLC, Defog
	Focal Length	4.7-129mm, 30x Optical
	Zoom Speed	Approx.2.7s(Optical Wide-Tele)
	Angle of View	65.2-2.11degree (Wide-Tele)
	Min. Working Distance	0-1500mm(Wide-Tele)
	Aperture Range	F1.6-F5.0
	HOUSING	Pan
Pan Speed		Configurable, from 0.1°/s to 250°/s, preset speed:300°/s
Tilt		From -5° to 90°
Tilt Speed		Configurable, from 0.1°/s to 150°/s, preset speed:200°/s
Presets		300
Patrol Scan		8 patrols, up to 32 presets per patrol
Max Resolution		1920 x 1080
Threaded Hole		1 set of G3/4 Gland through the bracket
Working Voltage		AC24V, AC100-240V
Communication Protocol		TCP/IP/PELCO-D/PELCO-P, other
Output Mode		RJ45
Cable Connection		Network cable +3-core power
Power		25W /35W (with thermostat)
Electric Current		2800mA
Enclosure Material		Stainless steel304 or 316L
Operating Temperature		-25°C~+60°C
Air Pressure		80KPa~106KPa
Relative Humidity		≤95% (+25°C)
Dimensions		Ø 570 x 213 (mm)
Mount	Wall or pole or ceiling, Indoor/ outdoor	
Net Weight	12Kg	
Ingress Protection	IP68	
Optional Choice	Heater, cooling, thermostat for below-10°C	

Note: This product is also available as a housing only in 304 or 316L

EXPLOSION-PROOF CAMERAS



SVEX-Q70-AHD

SVEX-HQ30-Z

Description	Explosion-proof 2MP 32X AHD Camera	Explosion-proof high speed dome Housing
CERTIFICATIONS		
Explosive Marking	Exd II C T6 Gb/Ext DA21 IP68 T80°C	Ex d IIC T6 Gb/Ext DA21 IP68 T80°C
Certificate	CNEx 15.2504X	CNEx15.2504X
MECHANICAL		
Material	Stainless 304 or 316L	Stainless 304 or 316L
IP Rating	IP68	IP68
Resolution	2MP	N/A
Pan	360°	360°
Pan Speed	Manual: 0.1° to 250°/s	0.1-300°/s
Tilt Range	-5°~90° (Auto Flip)	-90° to 0°
Tilt Speed	Manual: 0.1° to 150°/s Tilt preset speed:150°/s	0.1-250°/s
Digital Zoom	16x	N/A
Focal Length	4.8 to 153mm 32x Optical Zoom	N/A
Zoom Speed	Approx. 5.6 s (optical, wide to tele)	N/A
Aperture Range	F1.2 to F 4.4	N/A
Angle Field of View	Horizontal: 55.6° to 2.04° (wide to tele) Vertical: 32 4° to 1 14° (wide to tele)	N/A
Min. Working Distance	10mm-1500mm (Wide-Tele)	N/A
Alarm I/O	2/1	N/A
Optional	Surge Protector, Sun Shade	N/A
ELECTRICAL		
Power Consumption	25W/35W (with thermostat)	25W/35W (with thermostat)
Input Voltage	AC24V (or AC85V~AC265V)	AC85V~AC265V or DC24V or AC24V
Cable Entries	1	1
Air pressure	80Kpa to 106Kpa	80Kpa to 106Kpa
GENERAL		
Temperature	-25°C ~ 60°C	-25°C to 60°C
Humidity	<95% (no condensation)	≤95% (no condensation)
Cable Outlet Thread Spec	G3/4 or NPT3/4	1pcs M28 x 1.5 to G3/4
Dimensions (L x H x W)	∅ 250 x 352 (mm)	250 x 250 x 352 (mm)
Weight	15kg	11.5kg

EXPLOSION-PROOF CAMERAS

SVEX-CD-Z

Explosion-proof Fixed Dome Camera Housing

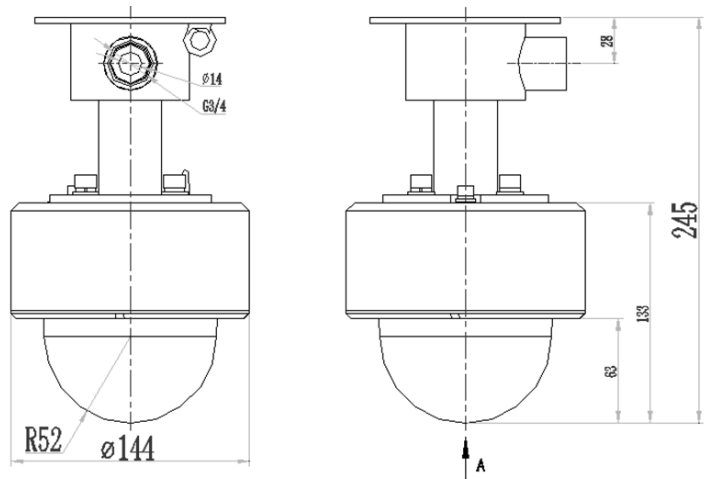


CERTIFICATIONS	Explosive Marking	CNEX, Exd II CT6 Gb/ Ex tD A21 IP68 T80°C
	Operating Conditions	-20°C ~ 60°C, Humidity: ≤95% RH
ENVIRONMENTAL	Ingress Protection	IP68
	Vandal Resistance	IK10
CONSTRUCTION	Casing	Stainless steel 304, 316L Optional with corrosion proof painting
	Dimensions	Ø 122 (mm) x 89 (mm)
	Net Weight	0.66kg(1.46lb)
	Gross Weight	0.71kg(1.57lb)

Features

- Stainless steel 304 or 316L
- Optional electro-polished or corrosion resistant paint finish
- Enclosure Protection: IP68
- Exd II CT6 Gb/ Ex tD A21 IP68 T80°C

Dimensions



EXPLOSION-PROOF

EXPLOSION-PROOF CAMERAS

SVEX-HIR1-S

2MP Anti-corrosion and Weatherproof PTZ IR Camera



Pan/Tilt	360°, 01°-45°/s / -90° to 90°
Ingress Protection	IP68
Housing Material	Stainless Steel 304 or 316L
Image Sensor	1/2.8" interline-transfer CCD
Max. Image Resolution	2.0 megapixel
Min. Illumination	Color 0.05Lux B/W: 0.01Lux
Optical Zoom	20X/30X
Lens	4.7 - 94mm (20X), 4.5 - 135mm (30X)

Note: This product available as a housing only in 304 or 316L SS

SVEX-610-2M20X-ZN

Explosion-proof Integrated PTZ Camera



Ex-proof mark	2G Ex db IIC T6 Gb / 2D Ex tb IIC T80°C Db
Hazardous Location Classification	Gas zone 1, 2; dust zone 21, 22
Ingress Protection	IP68
Housing Material	Stainless Steel 304 or 316L
Pan/Tilt	Continuous 360°, 0.1~45°/s / -90°~90°
Sensor	1/2.8" Progressive Scan CMOS
Cruise Scan	Supported
Presets	64/128/255/300
Alarm Input/Output	2-channel or 7-channel / 1-channel action with alarm
Audio Input/Output	1/1
Resolution	2MP
Cable	1pcs M25×1.5

Note: This product available as a housing only in 304 or 316L SS

EXPLOSION-PROOF CAMERAS

SVEX-1301-2M30X-ZN



Features

- ATEX, IECEx, CNEx, CE, Approved;
- Applicable for Gas Zone 1, Zone 2, Class II A, IIB, IIC, T1-T6 group)
- Dust Zone 21, 22.
- Certified for the latest standards IEC/EN60079 (2014)
- Cable glands: M27x1.25
- Cable entry: 2pcs
- Available in stainless steel 304 or 316L enclosure
- Surface optional electro-polished or painting
- Weather Proof IP68 (1.2m/45min)
- Wide voltage input: AC100-240V or AC24V
- Strong tempered glass, fit for hydrofluoric acid area
- Intelligent window defroster design
- Auto temperature adjust kit for aggressive area
- High precision wiper, support user-defined
- Fit for various brand cameras
- Can be wall, pole or ceiling mounted
- Optional: Available with Germanium Glass. Model: SVEX-1301-THZ

Note: This product available as a housing only in 304 or 316L SS

Description	Anti-corrosion Proof PTZ with 30X IP Camera Housing
CERTIFICATIONS	
Explosive Marking	Exd II C T6 GB/DIP A20 TA T6
Certificate	CNEx13 3114
MECHANICAL	
Material	Stainless 304 or 316L
IP Rating	IP68
Resolution	2MP
Pan	360°
Pan Speed	01° - 45°/s
Tilt Range	-90° to +90°
Tilt Speed	-
Digital Zoom	12x
Focal Length	4.5~135mm 30x optical zoom
Zoom Speed	Approx. 5.6 s (optical, wide to tele)
Aperture Range	F1.6 - F4.4
Angle Field of View	-
Min. Working Distance	-
Alarm	2ch, 7ch/ 1ch
Optional	Surge Protector, Optical Fiber Output, Audio, Alarm
ELECTRICAL	
Power Consumption	50W /70W (with thermostat)
Input Voltage	100~240 VAC
Cable Entries	1pcs G3/4 or NPT3/4
Air pressure	80Kpa to 106Kpa
GENERAL	
Temperature	-25°C ~ 60°C
Humidity	≤95% No Condensation
Cable Outlet Thread Spec	G-3/4"
Dimensions (L x H x W)	316 x 285 x 358 (mm)
Weight	23kg

EXPLOSION-PROOF THERMAL CAMERAS



SVEX-HIR7-THERMAL-2M30X-XXXXX-ZN

Explosion-proof Positioning Unit W/ Built-In Thermal Camera

Ex-proof Mark	Exd IIC T6 Gb/Ex tD A21 IP68 T80°C
Application	Gas zone 1, 2 (mixture of group IIA, IIB, IIC, T1~T6 gases, vapors and air may exist); dust zone 21, 22
Ingress Protection	IP68
Housing Material	Stainless Steel 304 or 316L
Image Sensor	1/2.8" Progressive Scan CMOS
Max. Image Resolution	2 megapixels
Min. Illumination	Color: 0.05Lux @ (F1.6, AGC ON) B/W: 0.01Lux @ (F1.6, AGC ON)
Digital Zoom	12x
Optical Zoom	30X, 4.5-135mm
Lens	Distance: 10mm-1500mm(Wide-Tele) Angle: 58.3-3.2 degree (Wide-Tele)
Alarm	Motion detection, tampering alarm, storage full, storage exception

Note: This product available as a housing only in 304 or 316L SS



SVEX-PTZ-D1-ZN

ATEX Certificated Stainless Steel Explosion-proof Camera Housing

Ex-proof Mark	Exd II C T6 GB/DIP A20 TA, T6 CNEx13 3114
Hazardous Location Classification	Class 1 Div 1; Class 2 Div 2
Application	Gas zone 1, 2
Ingress Protection	IP68
Housing Material	Stainless Steel 304 or 316L
Horizontal	360°
Horizontal Speed	0.1° - 45°/s
Vertical	-90° to +90°
Cruise Scan	Supported
Preset	64/128/255/300
Auto Cruise	Supported
Auto Scan	Supported
Dimensions (LxWxH)	312 x 238 x 350 (mm)/12.3" x 9.4" x 13.8" (in.)
Weight	23kg/50.7lbs

Note: This product available as a housing only in 304 or 316L SS

EXPLOSION-PROOF HOUSINGS



SVEX-T100



SVEX-T300

Description	Explosion-proof Camera Housing	Explosion-proof Camera Housing with IR
CERTIFICATIONS		
Explosive Marking	II 2G Ex db II C T6 Gb, II 2D Ex tb III C T80 °C Db	
Certificate	ATEX, IECEx, CE	
MECHANICAL		
Material	Available in 304 or 316L Stainless Steel	
IP Rating	IP68	
Window Thickness	-	
Window Area	-	
ELECTRICAL		
Power Consumption	15W/25W (with thermostat) ≤36W (without heat, fan)	
Input Voltage	AC100-240V or AC24V 50-60Hz	AC100-240V or AC24V
Voltage Scope	-	
Working Current	15W/25W (with thermostat) ≤36W (without heat, fan)	
Cable Entries	2	
Connection	Optical Video signal: 1-way video output Optical Audio: 1-way input, 1-way output Optical Alarm: 2-way alarm input, 1-way alarm output 2m integrated cable	
Air pressure	80KPa~110KPa	
GENERAL		
Temperature	-25°C ~ 60°C/-40°C ~ 60°C	
Humidity	≤95% (25°C)	
Cable Outlet Thread Spec	M27×1.25, G3/4, NPT3/4	
Wiper	No	Yes
Sunshield	Optional	Yes
Mounting	Wall, pole, ceiling mounted way	Wall Mount, Pole Mount
Dimensions (L x H x W)	Inner: 250 x 78 x 75 (mm) Outer: 524 x 179 x 208 {mm}	Inner: 250 x 78 x 75 (mm) Outer: 524 x 179 x 215 {mm}
Weight/Ship Weight	15kg	16kg
Optional	TVS6000V surge protect, multi mode or single mode, Sun shield, Auto-cooling, Auto-heating, RJ45 network signal	

EXPLOSION-PROOF

EXPLOSION-PROOF HOUSINGS



SVEX-T400



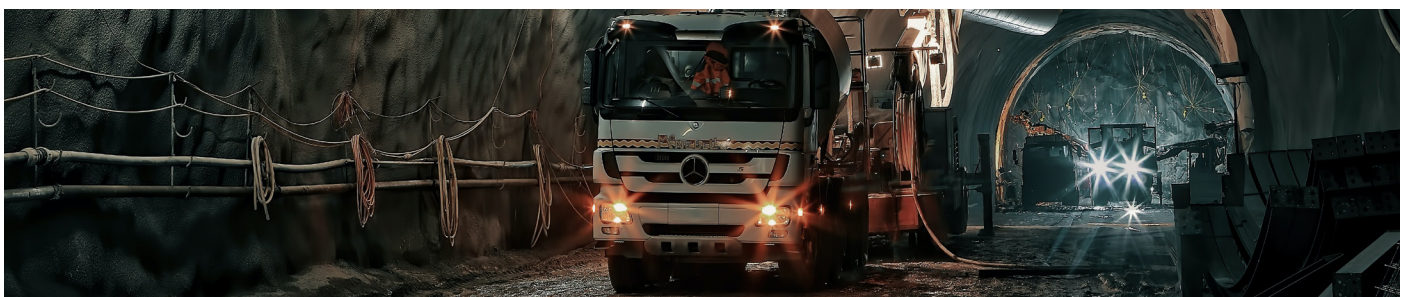
SVEX-T500A



SVEX-TH100

Description	Explosion-proof Camera Housing with IR	Explosion-proof All-Weather Camera Housing	Explosion-proof Thermal Camera Housing
CERTIFICATIONS			
Explosive Marking	Exd II C T6 GB/DIP A20 TA, T6 Gas Zone 1,2; Dust Zone 21, 22	Ex II 2 GD Ex d II C T6 Gb Ext III C T80°C Db	Exd II CT6 Gb/ Ex tD A21 IP68 T80°C
Certificate	IECEX, CNEx	Nemko 13ATEX 1525	CNEx 17.1573
MECHANICAL			
Material	Stainless steel 304 or 316L		
IP Rating	IP68	IP66	IP68
Window Thickness	10mm	15mm	8mm thickness tempered glass or Germanium glass for thermal camera
Window Area	Ø 66mm	80mm	Ø 70mm
IR Distance	up to 50m	-	
ELECTRICAL			
Input Voltage	12VDC or 220VAC / 50Hz	AC110-220/24VAC, 50/60Hz	Optional: AC24V, AC100~240V, DC12V, POE Power Supply
Voltage Scope	±10%	±10%	
Working Current	0.5A	2A	
Power Consumption	20W (Heater Included)	30W	
Cable Entries	3	3	
Connection	4-Core Cable for Lens Control 2-Core Cable for Camera Power Video Cable for Video Signal Output	2-core for power; 4-core for lens control; Coaxial cable for video signal out	
Air Pressure	80KPa ~106KPa	80KPa~110KPa	80KPa~110Kpa
GENERAL			
Temperature	-25°C ~ 60°C	-40°C to 60°C	-20°C~+60°C
Humidity	95% RH (+25°C)	Up to 95% RH (24°C)	≤95% RH (25°C)
Cable Outlet Thread Spec	G-3/4"	G-3/4" or M25 x 1.5	G-3/4"
Mounting	Fixed Bracket	Wall Mount	Fixed Bracket
Dimensions (L x H x W)	Inner: 257.7 x 116 x 116 (mm) Outer: 343 x 192 x 195 (mm)	Inner: 260 x 115.5 x 98 (mm) Outer: Ø188 x 657 (mm)	Inner: 379 x 85 x 85 (mm)
Weight/Ship Weight	13.2kg	16kg	7.5kg
Optional	Heater	Washer System can be Integrated	Sunshade, Voltage Input

EXPLOSION-PROOF



DUST/CORROSION PROOF HOUSINGS



SVEX-6004-Z



SVEX-HSF-Z

Description	Dust/Corrosion Proof Camera Housing	Air or Water Cooling Explosion-proof Camera Housing
MECHANICAL		
Material	Stainless 304 or 316L	Stainless 304 or 316L
IP Rating	IP68	IP68
Window Thickness	-	8mm
Window Area	Ø 75mm	Ø 80mm
Cooling Water Joint	N/A	G1/2
Cooling Water Temperature	N/A	≤35°C
Cooling Water Pressure	N/A	0.1 - 0.2 MPa
Cooling Water Flow	N/A	0.3 m³/h
Air Input Size	N/A	G1/2
Air Input Pressure	N/A	0.3-0.6 m³/min
ELECTRICAL		
Power Consumption	30W (Heater Included)	15W
Input Voltage	AC100-240V,OR AC24V, 50/60HZ	AC85V ~ AC265V or DC24V or AC24V
Input Voltage	-	AC100V ~ AC240V
Working Current	-	3A
Cable Entries	2	2
Connection	2-Core Cable for Camera Power 4-Core Cable for Lens Control 4-Core Cable for Wiper Power and Control	2pcs G3/4 or NPT3/4
Air pressure	86 ~ -106KPa	0.1-0.2 MPa
GENERAL		
Temperature	-40°C ~ 60°C	≤250°C
Humidity	≤95% RH (25°C)	<95% RH [77°F (25°C)]
Cable Outlet Thread	-	G-3/4"
Mounting	Wall, Corner, and Pole Mount	Fixed Bracket
Dimensions (L x H x W)	Inner: 210 x 80 x 80 (mm) Overall: 509 x 186 x 209 (mm)	Inner: 260 x 80 x 80 (mm)
Weight/Ship Weight	12.5kg	9.1kg
Optional	Wiper system, Surface treatment: paint coating, electroplated finish, Sun-shield, Heater, Cooling kit	-

EXPLOSION-PROOF

EXPLOSION-PROOF ACCESSORIES

SVEX-JXD

Explosion-proof Junction Box \varnothing 200 mm



Features

- Stainless steel material
- With multi-protocol decoder inside
- Optional address and signal speed
- Lens voltage optional
- Optional other electrical equipments
- 6 cable outlets
- Indoor and outdoor installation for all-weather use
- IP68

SPECIFICATIONS	
Ex-Marking	Exd II CT6
Certificate	CNEx05.0534
License No.	XK06-123-00251
ENVIRONMENTAL	
Air Pressure	86~106KPa
Temperature	-49°F ~ 140°F (-45°C ~ +60°C)
Humidity	≤95%RH [77°F (+25°C)]
ELECTRICAL	
Connection	8 Pin Terminal
Rated Value	250V/20A
Cable Type	22~14AWG
MECHANICAL	
Material	1Cr18Ni9Ti or 316L
IP Rating	IP68
Dimensions (HxWxD)	200 x 200 x 80 (mm)
Weight	7.7 lb (3.5Kg)
Shipping Weight	28.6 lb (13Kg)
Cable Ports	4
Cable Entry Size	G-3/4"
Mount	Indoor and outdoors for wall mount

SVEX-JXD2

Explosion-proof Junction Box \varnothing 187 mm



Features

- IP68, dust tight, protect against continuous immersion in water
- 4pcs G3/4 cable entries
- Rated for outdoors, petrochemical, high corrosive environments, and more.
- CNEX certificate no.: CNEx 16.1481

SPECIFICATIONS	
Ex-Marking	ExdIICT6, Gb/ Ex t D A21 IP68 T80°C
ENVIRONMENTAL	
Air Pressure	80KPa~106KPa
Temperature	-25°C to +60°C
Humidity	≤95% (25°C)
ELECTRICAL	
Rated Value	AC220V to 21A
MECHANICAL	
Material	304 or 316L Stainless Steel
IP Rating	IP68
Dimensions (WxHxD)	187 x 84 x 187 (mm)
Weight	7.7 lb (3.5kg)
Cable Ports	4x
Cable Entry Size	G-3/4"
Mount	Indoor and outdoors for wall mount

EXPLOSION-PROOF ACCESSORIES

SVEX-JXD3

Explosion-proof Junction Box \varnothing 413 mm



Features

- Stainless steel 304 or 316L
- Indoor and outdoor
- ATEX & IECEx dual explosion-proof certification
- For Gas Zone 1, Zone 2, Class II A, IIB, IIC, T1-T6 group)
- Dust Zone 21, 22

SPECIFICATIONS	
Ex-Marking	II 2G Ex db II C T6 Gb, II 2D Ex tb IIIC T80 °C Db
Certificate	Presafe 17 ATEX 11327X, IECEx PRE 18.0010X
ENVIRONMENTAL	
Air Pressure	80KPa ~ 110Kpa
Temperature	-40°C ~ 60°C
Humidity	<95% (25°C)
ELECTRICAL	
Power	AC100-240V, or AC24V
MECHANICAL	
Material	Stainless Steel 304 or 316L
IP Rating	IP68
Dimensions (HxWxD)	413 x 397 x 183 (mm)
Weight	13.2kg
Cable Ports	4pcs M25 x 1.5, M27 x 1.25

SVEX-JXD4

Explosion-proof Junction Box \varnothing 187 mm



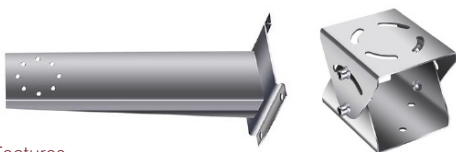
Features

- 316L stainless steel construction
- Four (4) cable ports, G-3/4-in. Cable entry standard
- IP68 ingress protection
- Designed for extreme temperature environments
- For use with explosion-protected cameras

SPECIFICATIONS	
Ex-Marking	Exd II CT6 Gb DIP A21 IP68 T80°C
Certificate	CNEx 16.1481
ENVIRONMENTAL	
Air Pressure	80KPa ~ 106Kpa
Temperature	-40°C ~ 60°C
Humidity	Less than 95% RH
ELECTRICAL	
Power	AC220V, AC24V
Max Current	21A
MECHANICAL	
Material	Stainless Steel 304 or 316L
IP Rating	IP68
Dimensions (Diam.xH)	\varnothing 187 x 84 x 253 (mm)
Weight	3.20 kg (7.05 lb)
Cable Ports	4x cable ports, G-3/4-in.

SVEX-M1

Explosion-proof Mount



Features

- Stainless Steel Material
- Indoor & Outdoor User
- Easy Installation & Maintenance

SPECIFICATIONS	
Material	Stainless Steel
Weight	3.5Kg (Stainless Steel) 2.7Kg (Iron Painting)
Load	50Kg
Mounting Type	Wall Mount

EXPLOSION-PROOF ACCESSORIES



SVEX-171-Z



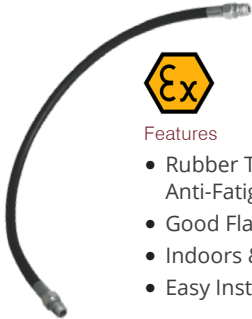
SVEX-151-Z

Description	Explosion-proof Monitor with GVA & BNC Connectors				15" Explosion-proof Monitor			
CERTIFICATIONS								
Explosive Marking	Exd II BT6 / DIP A21 TA, T6				Ex II 2G Ex dII T6 (Tamb=50°C)			
Certificate	CNEx06.1580				Sira 07ATEX1124X			
License Number	XK06-123-00251				-			
MECHANICAL								
Material	Stainless Steel 304 or 316L				1Cr18Ni9Ti or 316L			
IP Rating	IP65				IP65			
Window Thickness	12 mm				12 mm			
Window Area	306 x 230 (mm)				306 x 230 (mm)			
Cable Outlets	2				2			
Mounting	Vertical placement or special bracket				Stand or By Suspending Bracket			
ENVIRONMENTAL								
Air Pressure	88~108KPa				86~106KPa			
Temperature	0°C ~ +50°C				0°C~+50°C			
Humidity	≤ 95%RH(+25°C)				≤ 95%RH (+25°C)			
ELECTRICAL								
Input Voltage	100VAC~240VAC				100VAC~220VAC			
Signal	1Vp-p Composite Video				1 Vp-p Composite Video			
Working Current	≤ 300 mA				≤300mA			
Power Consumption	24W				24W			
Resistance	75Ω				75Ω			
Joint	Video Cable and Power Cable Out				Video Cable & Power Cable Out			
RGB Input	15-Pin D-SUB				15pin D-SUB			
S-VGS Input	4-Pin Mini DIN				4-pin Mini DIN			
Panel	1 for On / Off Power				1 For On/Off Power			
Connection	2-Core Power Cable; 1-Core Video Cable				2-Core Power Cable; 1-Core Video Cable			
LCD SPECIFICATIONS								
Panel	17.1 Inch (38.1cm), TFT	Horizontal Angle	140°(CR>5)	Panel	15inch (38cm), TFT	Horizontal Angle	140° (CR>5)	
Color	16,770,000	Response Time	16 ms	Color	16,770,000	Response Time	8 ms	
Pixel Distance	0.297 mm	Horizontal Refresh	38 ~ 60Khz	Pixel Distance	0.297 mm	Horizontal Refresh	38~60KHz	
View Area	304.1mm(W) x 228.0mm(H)	Pitching Refresh	56 ~ 75Hz	View Area	304.1mm(W) X 228.1mm(H)	Pitching Refresh	56~75Hz	
Contrast	500:1	Bandwidth	80MHz	Contrast	550: 1	Bandwidth	80MHz	
Brightness	300cd/m2	Resolution	1024 x 768	Brightness	300cd/m2	Resolution	1024x768 @ 60Hz	
GENERAL								
Cable Outlet Thread Spec	G-3/4" or M25X1.5				G-3/4 "or M25X1.5			
Dimensions (L x H x W)	480 x 338 x 220 (W x H x D) (mm)				468 x 336 x 220 (W x H x D) (mm)			
Weight/Ship Weight	28 kg/ 31 kg				24 kg/28 kg			

EXPLOSION-PROOF ACCESSORIES

SVEX-FLEXTUBE

Explosion-proof Flexibility Tube



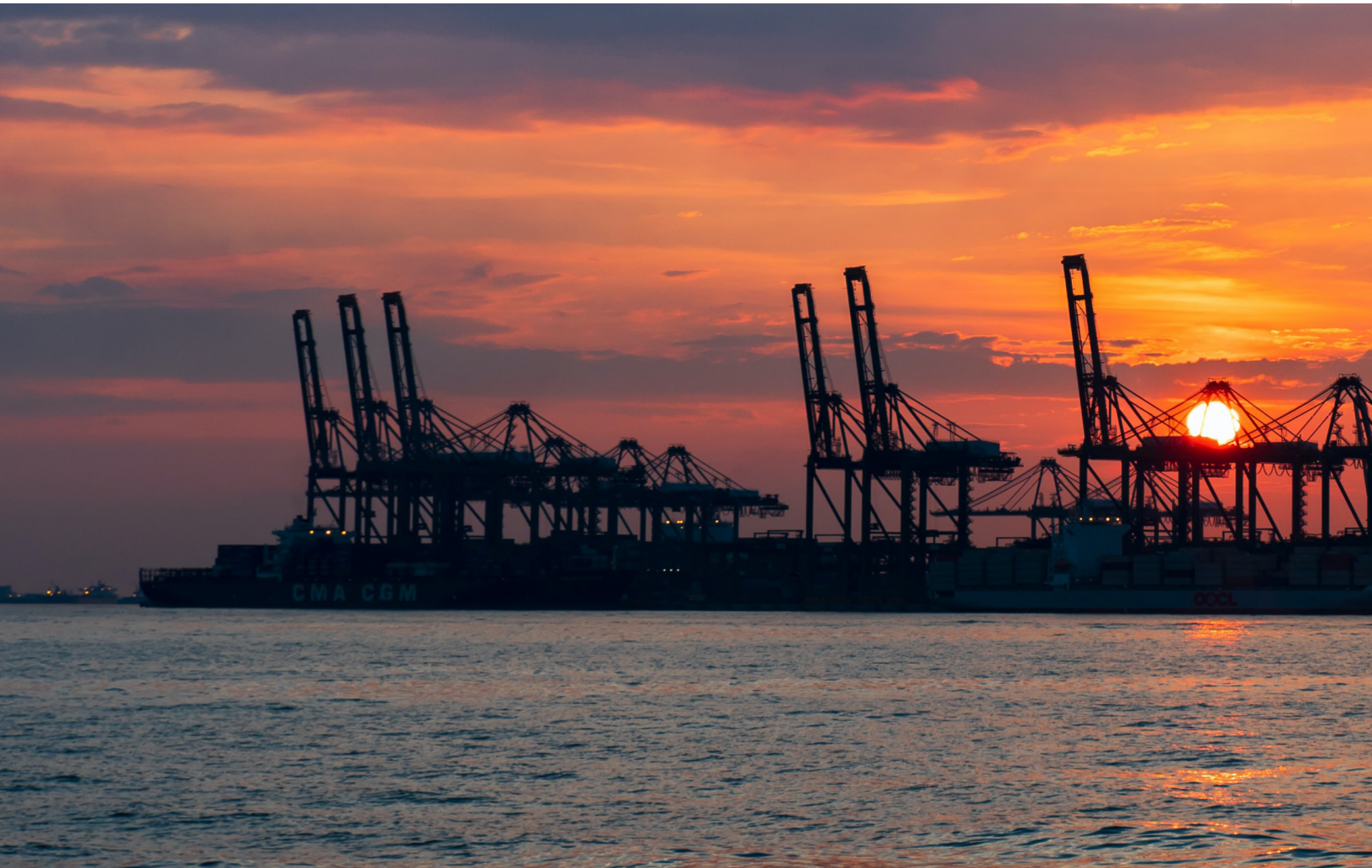
Features

- Rubber Tube Good Pressure Stand, Excellent Bend & Anti-Fatigue Feature
- Good Flammation, Oil & Corrosion Function
- Indoors & Outdoors Use
- Easy Installation & Maintenance

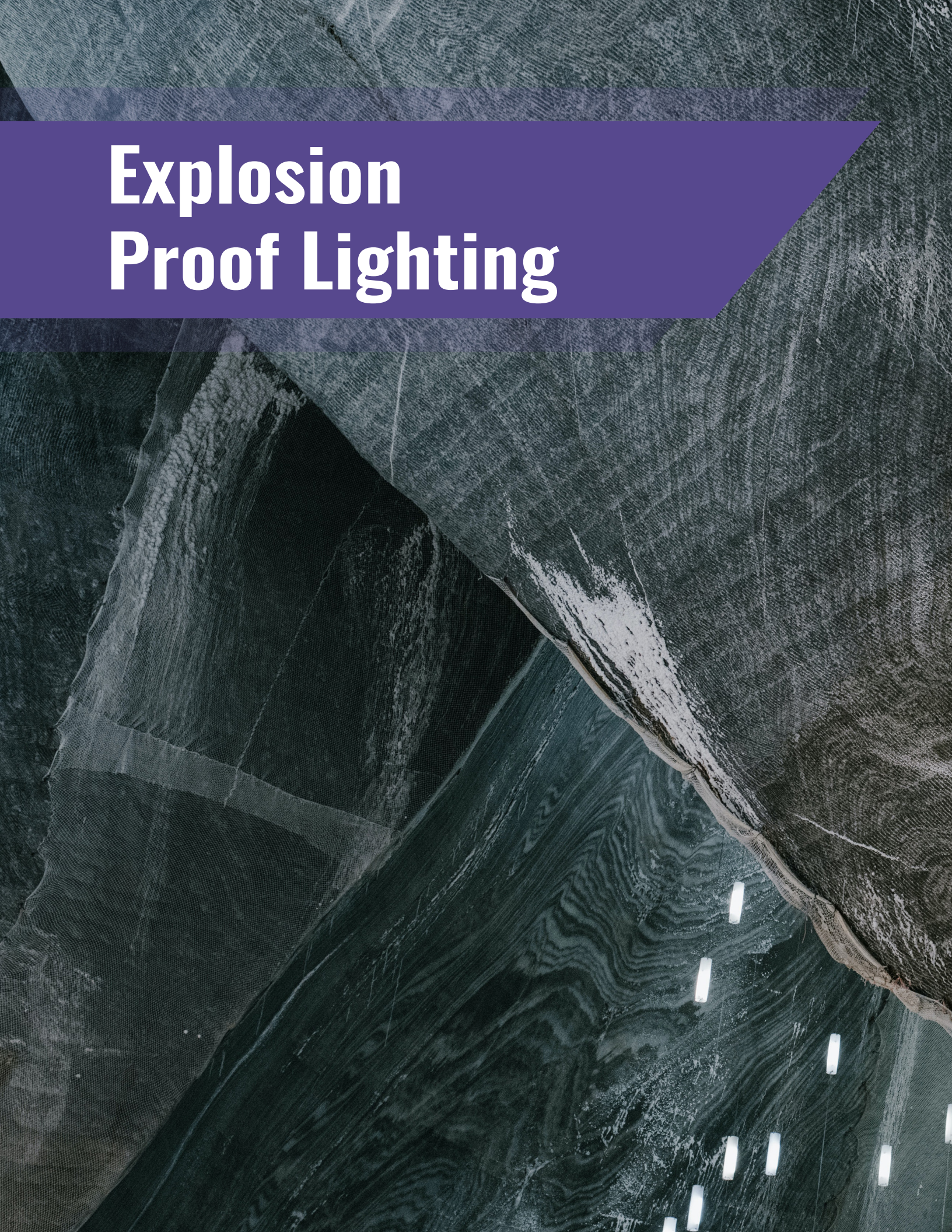
SPECIFICATIONS

Ex-Marking	Exd I / II
Certificate	CNEx04.1307
License No.	XK06-123-00251
MECHANICAL	
Material	Rubber Tube Inside w/ Steel Knit, Two Heads w/ Galvanized Screw Joints
IP Rating	IP-54

Type	Inner Diameter	Outer Diameter	Rubber Thickness (mm)		Steel Net. Diameter (mm)		Min Bend Diameter (mm)	Screw Joint Type	Total Length (m)
			Inner	Outer	Size	Accuracy			
SVEX-FLEXTUBE-1	13	23	>1.5	>1.0	20.0	±0.8	190	G-3/4"	1.0
SVEX-FLEXTUBE-1.5	13	23	>1.5	>1.0	20.0	±0.8	190	G-3/4"	1.5
SVEX-FLEXTUBE-2	13	23	>1.5	>1.0	20.0	±0.8	190	G-3/4"	2.0
SVEX-FLEXTUBE-5	13	23	>1.5	>1.0	20.0	±0.8	190	G-3/4"	1.0
SVEX-FLEXTUBE-15	13	23	>1.5	>1.0	20.0	±0.8	190	G-3/4"	1.5
SVEX-FLEXTUBE-20	13	23	>1.5	>1.0	20.0	±0.8	190	G-3/4"	2.0



Explosion Proof Lighting



EXPLOSION-PROOF LIGHTING

SHORT GLASS SERIES



VL-EXS8230-XX
10/20W-45W Ex-proof
Short Emergency Light

- Power: AC100-270V
- Size (Dia. x H): Ø 180 x 148 (mm)
- Luminous Efficiency 120 lm/W
- Protection Grade: IP66
- Available: 10/20W, 30W, 40W, 45W

SHORT GLASS SERIES



VL-EXS8231-XX
50W-90W Ex-proof
Short Hanging Light

- Power: AC100-270V
- Size (Dia. x H): Ø 230 x 211 (mm)
- Luminous Efficiency 120 lm/W
- Protection Grade: IP66
- Available: 50W, 60W, 80W, 90W

SHORT GLASS SERIES



VL-EXS8232-XXX
100W-150W Ex-proof
Short Street Light

- Power: AC100-270V
- Size (Dia. x H): Ø 300 x 275 (mm)
- Luminous Efficiency 120 lm/W
- Protection Grade: IP66
- Available: Empty Fixture, 100W, 120W, 150W

SHORT GLASS SERIES



VL-EX8233H-XXX
50W-90W Ex-proof Short
High Bay Light

- Power: AC100-270V
- Size (Dia. x H): Ø 267x296 (mm)
- Luminous Efficiency 120 lm/W
- Protection Grade: IP66
- Available: 50W, 60W, 80W, 90W

SHORT GLASS SERIES



VL-EX8235S-XXX
100W-150W Ex-proof
Short High Bay Light

- Power: AC100-270V
- Size (Dia. x H): Ø 356 x 232 (mm)
- Beam angle: 94.1°
- Available: 100W, 120W, 150W

SHORT GLASS SERIES



VL-EXL8235-XXX
150W-240W Ex-proof
Long High Bay Light

- Power: AC100-270V
- Size (Dia. x H): Ø 415 x 245 (mm)
- Beam angle: 89.4°
- Available: 150W, 200W, 240W

SHORT GLASS SERIES



VL-EXT8231-XXX
50W-90W Ex-proof
Spot Light w/Lens

- Power: AC100-270V
- Size (Dia. x H): Ø 415 x 245 (mm)
- Beam angle: 14°
- Available: 50W, 60W, 80W, 90W

SHORT GLASS SERIES



VL-EXT8232-XXX
50W-90W Ex-proof
Spot Light w/Lens

- Power: AC100-270V
- Size (Dia. x H): Ø 300 x 236 (mm)
- Beam angle: 14°
- Available: 50W, 60W, 80W, 90W

LONG GLASS SERIES



VL-EXL8230-XX
20W-45W Ex-proof
Long Hanging Light

- Power: AC100-270V
- Size (Dia. x H): Ø 180 x 200 (mm)
- Beam angle: 146.4°
- Available: 20W, 30W, 40W, 45W

LONG GLASS SERIES



VL-EXLG-8231-XX
50W-90W Ex-proof
Long Hanging Light

- Power: AC100-270V
- Size (Dia. x H): Ø 230 x 307 (mm)
- Beam angle: 141.9°
- Available: 50W, 60W, 80W, 90W

LONG GLASS SERIES



VL-EXLG-8232-XXX
100W-150W Ex-proof
Long Hanging Light

- Power: AC100-270V
- Size (Dia. x H): Ø 325 x 354 (mm)
- Beam angle: 141.9°
- Available: 100W, 120W, 150W

LONG GLASS SERIES



VL-EXLG-8233-XX
50W-90W Ex-proof
Long Platform Light

- Power: AC100-270V
- Size (Dia. x H): Ø 273 x 389 (mm)
- Beam angle: 141.9°
- Available: 50W, 60W, 80W, 90W

EXPLOSION-PROOF LIGHTING

FLOOD LIGHT SERIES



VL-EX8199-XXX
80W-100W Ex-proof
Flood Light

- Power: AC100-270V
- Size (LxWxH): 383 x 228 x 77 (mm)
- Beam Angle: 106.5°
- Protection Grade: IP66
- Available: 80W, 100W

FLOOD LIGHT SERIES



VL-EXSP-8260-XXX
70W-120W EX-proof
Small Split Flood Light

- Power: AC100-270V
- Size (LxWxH): 300 x 186 x 174 (mm)
- Beam Angle: 106.5°
- Protection Grade: IP66
- Available: 70W, 75W, 100W, 120W

FLOOD LIGHT SERIES



VL-EXMP-8260-XXX
80W-190W Ex-proof
Medium Split Flood Light

- Power: AC100-270V
- Size (LxWxH): 383 x 228 x 77 (mm)
- Beam Angle: 106.5°
- Protection Grade: IP66
- Available: 80-100W, 120W, 150W, 190W

FLOOD LIGHT SERIES



VL-EXLP-8260-XXX
150W-250W Ex-proof Short
Large Split Flood Light

- Power: AC100-270V
- Size (LxWxH): 383 x 228 x 77 (mm)
- Beam Angle: 106.5°
- Protection Grade: IP66
- Available: Empty fixture, 150W, 200W, 220W, 250W

FLOOD LIGHT SERIES



VL-EXS8266-XXX
100W-270W Ex-proof
Small Flood Light

- Power: AC100-270V
- Size (LxWxH): 552 x 323 x 190 (mm)
- Beam angle: 106.5°
- Available: Empty fixture, 240W, 300W, 380W

FLOOD LIGHT SERIES



VL-EXL8266-XXX
100W-270W Ex-proof
Large Flood Light

- Power: AC100-270V
- Size (LxWxH): 630 x 425 x 195 (mm)
- Beam angle: 89.4°
- Available: Empty fixture, 350W, 400W, 440W, 480W

FLOOD LIGHT SERIES



VL-EXI8189-XX
40W-70W Ex-proof
Integral Flood Light

- Power: AC100-270V
- Size (LxWxH): 300 x 186 x 137 (mm)
- Beam angle: 106°
- Available: Empty fixture, 40W, 60W, 70W

FLOOD LIGHT SERIES



VL-EXI8189B-XX
40W-70W Ex-proof
Small Portable Flood Light

- Power: AC100-240V
- Size (LxWxH): 367 x 242 x 374 (mm)
- Beam angle: 15° to 120°
- Available: Empty fixture, 40W, 60W, 70W

LINEAR LIGHT SERIES



VL-EX8197S
100W-270W EX-proof
Single Linear Light

- Power: AC110V - 270V
- Size (LxWxH): 1280 x 123 x 146 (mm)
- Explosion-proof fluorescent lamp
- Ex-proof Grade: ExdIICT6

LINEAR LIGHT SERIES



VL-EX8197D
100W-270W EX-proof
Double Linear Light

- Power: AC110V - 270V
- Size (LxWxH): 1280 x 202 x 146 (mm)
- 2x Explosion-proof fluorescent lamp
- Ex-proof Grade: ExdIICT6

EMERGENCY LIGHT



VL-EX8190-2
100W-270W EX-proof
Emergency LED Light

- Power: AC110V - 270V
- Size (LxWxH): 230x260x85 (mm)
- Charging Time: 48h
- Working Time: 120 min

EMERGENCY SIGN



VL-EX8191
100W-270W EX-proof
Emergency Sign Light

- Power: AC110V - 270V
- Size (LxWxH): 350 x 193 x 79 (mm)
- Weight: 2.8 kg
- Ex-proof Grade: ExdIICT6

EXPLOSION-PROOF LIGHTING

STREET LIGHT



VL-EXO-8231-XX
50W-90W Ex-proof
Street Light

- Power: AC100-270V
- Size (Dia. x H): Ø 230 x 265 (mm)
- Beam angle: 122.4°
- Available: 50W, 60W, 80W, 90W

STREET LIGHT



VL-EXO-8232-XXX
100W-150W Ex-proof
Street Light

- Power: AC100-270V
- Size (Dia. x H): Ø 325 x 305 (mm)
- Beam angle: 122.4°
- Available: 100W, 120W, 150W

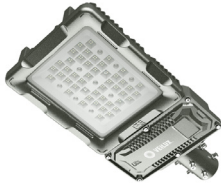
STREET LIGHT



VL-EXLM9223-XXX
120W-180W Ex Tri-Proof
Large Street Light

- Power: AC 220V 50/60HZ
- Size (Dia. x H): 713.4 x 318.3 x 98.1 (mm)
- Light Efficiency > 120 Lm/w
- Available: 120W, 180W

STREET LIGHT



VL-EXOM8260-XXX
100W-200W Ex-proof
Medium Street Light

- Power: AC100-270V
- Size (LxWxH): 315 x 690 x 95 (mm)
- Luminous Efficiency 120 lm/W
- Beam angle: 106.5°
- Available: Empty Fixture, 100W, 120W, 160W, 200W

STREET LIGHT



VL-EXLM8260-XXX
160W-250W Ex-proof
Large Street Light

- Power: 100W - 270W
- Size (LxWxH): 315 x 690 x 95 (mm)
- Luminous Efficiency 120 lm/W
- Beam angle: 89.4°
- Available: 160W, 200W, 220W, 250W



Thermal Sensors and Access Control



FACE RECOGNITION



VTHFR-2M

Face Recognition Access Control Terminal with Digital Temperature Measurement Module

Face Recognition Accuracy Rate	>99%
Face Recognition Time	200ms
Face Capacity	10,000
Card Capacity	100,000
Storage Capacity	4GB
Event Capacity	30,000 (with images)
Measurement Range	30°C - 45°C
Measurement Accuracy	0.1°C
Measurement Deviation	≤±0.3°C
Measurement Distance	1m
Authentication Mode	Face Whitelist: (1:N)
	Card:(1:N)
	Face +Body temperature
Card Type	Mifare 1 Card
User Management	Support user library addition, deletion, update
Screen	Touch Screen, Size:7 inch, Resolution: 600×1024
Camera	Dual Lens, 2MP, 1080P



VTHFR-2MSA

Face Recognition Terminal with Digital Temperature Measurement Module

Face Recognition Accuracy Rate	>99%
Face Recognition Time	200ms
Face Capacity	10,000
Card Capacity	100,000
Storage Capacity	4GB
Event Capacity	30,000 (with images)
Measurement Range	30°C - 45°C
Measurement Accuracy	0.1°C
Measurement Deviation	≤±0.3°C
Measurement Distance	1m
Authentication Mode	Face Whitelist: (1:N)
	Card:(1:N)
	Face +Body temperature
Door Opening Method	Face, Password, QR code, Card
Communication Mode	10/100Mbps adaptive network port
User Management	Supports user library addition, deletion, update
Record Management	Supports local recording and real-time upload

THERMAL SCANNING



VTH2-3828

Precise Temperature Measurement
Thermal Imager

Detector	VOx uncooled thermal FPA
Resolution	384×288
Measurement Range	0°C~60°C
Accuracy	±0.3°C@ 33°C~42°C of target temperature
Flux	>100 people/minute
Measurement Mode	Intelligent human face tracking and measuring
High Temperature Alarm	Pop out window, audible alarm, capture alarm
Focal Length	7.8mm
Focus	Auto focus/manual focus
SDK	Supported
Professional Analysis Software	Supported
Power Voltage	10~36V DC
@25°C Typical Consumption	≤3W
Power Protection	Support over-voltage, under-voltage, reverse connection protection
POE	Support



VHPTM-BB

High Precision Human Body Temperature
Measurement Black Body

Working Voltage	AC180~240V
Power Consumption (Highest)	260W
Power Consumption (Highest)	0°C~ 40.0°C
Working Temperature	Indoor 5°C~ 100°C
Calibration Temperature	35°C~ 37°C
Emissivity	0.97±0.02
Temperature Resolution	0.1°C
Settle Time	≤5min
Temperature Measurement Accuracy	±0.2°C@36°C
Temperature Stability	±(0.1~0.3)°C/h
Effective Emissivity Surface	100mm x 80mm
Size (LxWxH)	195 x 150 x 110 (mm)

THERMAL SCANNING

V-BLACKBODY

Portable Blackbody



Temperature Range	40.0°C (Ambient temp. +5.0°C to 50.0°C)
Emissive Area	70mm×70mm
Temperature Resolution	0.1°C
Accuracy	±0.2°C (@40°C)
Stability	±(0.1~0.2)°C/30min
Emissivity	0.97±0.02
Power Supply	220VAC 50Hz 50W
Operating Ambient Temp.	0°C~40°C / ≤80%RH
Dimension	110mm(W)×120mm(H)×180mm(D)
Weight	1.8kg
Option	RS485 communication



VTHPH-1612

Portable Contactless Thermal Imager

Sensor	Uncooled focal plane
Temperature Range	30°C- 45°C
Accuracy	±0.5°C@1M
Minimum Measuring Distance	15cm
Temperature Measurement Response Time	≤500ms (95% of reading)
Thermal Imaging Pixel	19200 (160 x 120)
Swatch	Black white, red white, blue white, iron red, rainbow
Field Of View (FOV)	56°(H) x 42°(V)
Instantaneous FOV (IFOV)	6mrad
Thermal Imaging Sensitivity	< 50mk
Temperature Display	Center temperature measurement and high temperature tracking (default)
Temperature Measuring Point	Central point, 3 temperature measuring points can be added
Service Time	≥6 hours
Charging Time	4 hours
Image Storage	Micro SD card
Display	2.8" TFT LCD

THERMAL SCANNING

VX-TH9266

Thermal & Optical Bi-spectrum Network Camera



Features

- High sensitivity thermal module with 256 x 192 resolution
- NETD is less than 60mk (@25°C)
- Supports contrast adjustment
- Leading thermal image processing technology: Adaptive AGC, DDE, 3D DNR
- Up to 15 palettes available to adjustable color spectrum
- Reliable temperature-anomaly alarm
- Temperature range from -15°C to 150°C
- High quality optical module with 2MP resolution
- Bi-spectrum image fusion, picture-in-picture preview
- Supports capture and save in PC of personnel in and out

Some Application Examples



Airports



Metro



Commercial Buildings



Schools

THERMAL	Image Sensor	Vox Uncooled Focal Plane Arrays
	Resolution	256 x 192
	Pixel Interval	12pm
	Aperture	F1.0
	Field Of View	35° x 27° (HxV)
OPTICAL	Image Sensor	1/2.8" 2.0M Pixel CMOS
	Resolution	1920 x 1080P
	Min. Illumination	Color: 0.005Lux @ (F1.2, AGC ON), B/W 0.001 (F1.2, AGC ON)
	Field of View	84° x 45° (HxV)
	Focal Length	4mm
	Shutter Speed	1s to 1/100,000s
	White Balance	Auto/Manual/ATW Lamp/Sodium Lamp / Auto-tracking / White Balance / Indoor/Outdoor/Daylight
FEATURE	Day & Night	Mode IR cut filter with auto switch
	WDR	80dB
	Bi-spectrum Image Fusion	Fusion view of thermal view and overlaid details of the optical channel
	Picture in Picture	Combines details of thermal and optical image PIP, overlay thermal image on optical image
SMART FUNCTION	Face Capture	Built-in learning A.I. algorithm, Supports simultaneous detection of 20-30 faces
	Temperature Measurement	Supports global and local temperature
	Temperature Range	From -15°C to +150°C
	Temperature Accuracy	Target temperature 35°C~38°C ±0.3°C Target temperature 20°C~33°C ±0.6°C Target temperature 38°C~50°C ±0.6°C
NETWORK	Main Stream	Thermal: 25fps (1920 x 1080, 1280 x 720)
	Sub-Stream	Thermal: 25fps (704 x 576, 352 x 288)
	Video Compression	H.264 (Baseline/Main/High Profile)/ MJPEG/H265
	Audio Compression	G711u/ G711a/ G.7221 / MP2L2 /G.726/PCM
	Protocols	TCP/IP, ONVIF, GB/T 28181, DHCP, RTP, RTSP, PPPoE UPnP, UDP
	API	ONVIF (Profile S, Profile G, Profile T), SDK
	Languages	English, Chinese

THERMAL SCANNING

VBIP-8HT2712

Body Temperature Detection Network Camera



Detector	VOx uncooled thermal FPA
Resolution	384×288
Measurement Range	0°C~60°C
Accuracy	±0.3°C@ 33°C~42°C of target temperature
Flux	>100 people/minute
Measurement Mode	Intelligent human face tracking and measuring
High Temperature Alarm	Pop out window, audible alarm, capture alarm
Focal Length	7.8mm
Focus	Auto focus/manual focus
SDK	Supported
Professional Analysis Software	Supported
Power Voltage	10~36V DC
@25°C Typical Consumption	≤3W
Power Protection	Support over-voltage, under-voltage, reverse connection protection
POE	Support

VBIP-8TH2712-B

Body Temperature Measurement Camera

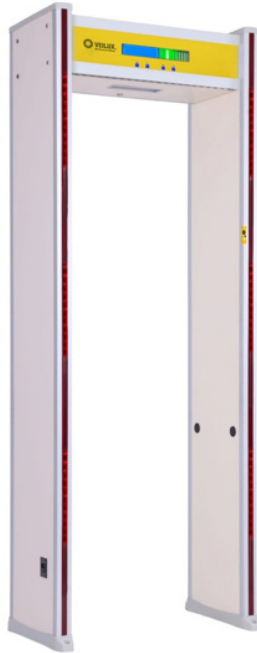


Detector Type	Uncooled IRFPA Microbolometer
Effective Pixels	320(H) ×240(V)
Thermal Sensitivity (NETD)	≤50mK @F1.0, 300K
Spectral Range	8~14um
Lens Type	Fixed/ Manual Focus
Focal Length	8mm
Image Sensor	1/2.8" Sony CMOS
Effective Resolution	1920(H)×1080(V)
Focus Control	Motorized
Compression	H.265, H.264, MJPEG
Digital Zoom	16x
Supported	Mirror, Defog, Motion Detection
Detection Mode	Body temperature monitoring
Temperature Alarm	Over temperature alarm
Interoperability	ONVIF, CGI, SDK
Alarm	2ch Alarm In, 2ch Alarm Out
Audio Interface	1ch Audio In, 1ch Audio Out
Power Supply	DC12V/POE (IEEE 802.3af)

THERMAL SCANNING METAL DETECTOR

VTHWT-HMD-1

Human Body Temperature Measurement Metal Security Gate



Features

- Multi-function, support human body temperature measurement and metal detection
- Rapid deployment and easy to use, the temperature can be measured on the wrist or forehead
- Different height temperature detection sensors are deployed on both sides, it is convenient for people of different heights
- Temperature measurement distance: 4-8cm, error <math><0.5^{\circ}\text{C}</math>
- Non-contact detection to avoid cross infection
- Avoid the leakage of manual temperature measurement when the flow is large
- Editable temperature alarm: the alarm will be triggered when the detected human temperature is above the set value
- Compensates for environmental temperature
- Flexible adjustment to improve the accuracy of detection
- 18 different metal detection areas that can pinpoint metal contraband
- Engineered with PVC synthetic material, making this a stable product, resistant to environmental factors, ensuring a long service life

Display Content	The display will show the current temperature of the human body and the number of alarm people. When no one passes, the display will show the temperature of the working environment. The green light will indicate it is ready to operate. The red light indicates the temperature exceeds the set threshold or metal objects are detected. The signal interference indicator will show the presence or absence of interference in zones 1-18 from top to bottom.
Temperature Detection Range	0°C~45°C
Temperature Error	±0.5°C
Accuracy	0.02°C
Metal Detection Zone Mode	18 metal detection areas
Metal Detection Accuracy	With the function of adjusting sensitivity, each location can set the sensitivity of 300 levels (0~299), the minimum can identify a coin
Password Protection	Only authorized personnel can operate
Security	Can exclude belt buckle, jewelry, keys and other items. It's no damage to pacemakers, hearing AIDS, pregnant women, CDS, etc.
Power Supply	AC220V/60HZ
Power Consumption	<math><20\text{W}</math>
Operating Temperature	-10°C~45°C
Operating Humidity	<math><80\%</math>
Weight	50KG
Overall Dimension	2270 x 830 x 500 (mm)
Channel Dimension	2000 x 700 x 500 (mm)
Notes	The installation environment should be rainproof, moisture-proof and dry, and the environment temperature balance should be kept as far as possible. High temperature objects should be kept away from the surrounding environment. Chemical agents such as 84 disinfectant and 75% ethanol disinfectant should be avoided from corroding the outer membrane of the temperature control probe.

DISINFECTION CHANNEL



VX-DIC-ZN

Mobile Temperature Measurement and Disinfection Channel with Face Recognition

AI Face Recognition	Face recognition even when wearing a mask
Face Identifier	8-inch LCD and capacitive touch screen Vertical screen Resolution ratio: 800x1280
Measurement	Temperature Testing distance: <50cm Temperature measurement error: $\pm 0.5^{\circ}\text{C}$ Accuracy: 99.7%
Measurement	Temperature Testing distance: <50cm Temperature measurement error: $\pm 0.5^{\circ}\text{C}$ Accuracy: 99.7%
Disinfectant Tank	Capacity: 25L
Control System	Automatic 30 seconds for disinfection.
Operating System	Android 7.1 or above Linux
Camera	Monocular camera: RGB 2 million pixels, HDR support (optional binocular camera); RGB 2 million pixels, IR 1.3 megapixel, HDR supported
Card Reader	Support NFC tag, RF Card, NFC (ISO 144443b) 13.56MHz Control interface in SDK
ID Card Reader (Optional)	Supports the identification function for second generation ID cards. Control interface in SDK
Proximity Sensor	Control interface in SDK



VX-DIC-2-ZN

Mobile Temperature Measurement and Disinfection Channel

Tank Volume - Disinfectant	18L
Temperature Reading Time	~2 seconds
Temperature Capturing Area	Forehead, inside of wrist (non-contact)
Temperature Reading Distance	15-20cm
Temperature Accuracy	$\pm 0.5^{\circ}\text{C}$ at room temperature
Temperature Collection Range	$34^{\circ}\text{C} - 45^{\circ}\text{C}$
Disinfectant Type	Food Grade
Channel Size (HxWxL)	1950 x 1100mm x 2000 (mm)
External Dimension (HxWxL)	2400 x 1200 x 2100 (mm)
Operating Noise	Less than 36dB
Working Environment	0°C to 35°C (disinfectant can't be used when it's frozen below 0°C)
Power	450W
Power Supply	220V/AC
Weight	~260kg

Note: This item is also available with a Face Recognition module. Model VX-DIC-3A

VK-IP-S-N

Network Control Keyboard



System	Linux
Max Device	999
Decoding	H.265, H.264
Resolution	Max 1080P for 1 channel: 1920 x 1080
Protocol	Onvif
Joystick	4D
Output	RS422 (Reserved), RS232 (Development port), RJ45
Beep	On/Off
Screen	TFT LCD 800 x 480
Power Supply	DC12V/2A, ≤5W
Operating Humidity	20%~80% RH
Operating Temperature	-10°C ~ 55°C (14°F ~ 131°F)
Dimensions (LxWxH)	297 x 210 x 118.8 (mm)
Net Weight	890g



REFERENCES

Veilux provides security and surveillance solutions to all types of establishments. We enable integration of all Security and Safety Systems. These selected examples represent only part of Veilux references in the MEA region.

IRAQ

- Minister of electricity office
- Alrasikh Corporation
- Tigris & sureties Bank.
- North Bank (Karradah Branch).
- Albelad Aleslami Bank (Mansoor Branch).
- English Village of Kurdistan (Erbil).
- Naz City Flats in Erbil Kurdistan.
- Khan Zadh in Kurdistan Erbil.
- Baghdad Bank – Bakubah Branch.
- Baghdad Bank – Mansur Branch.
- International Center of Agriculture.
- Al-Alamyah Groups
- Asia Cell Company
- Central Hospital in Al-Faluja

KSA

- Specialized Penal Court
- Military Factory Expansion
- Hail Governor Building
- Prince Sultan Specialized Hospital
- Saudi Port Authority
- Abdul Samad Al Qurashi Companies Group
- Fawaz Al Hokair Group
- Olaya Towers
- Arig Hq Complex
- Criminal Court
- El Swailem Tower Project
- Saudi Electricity Company
- Al-Muheissen & Al-Belyawee Tower
- Moi Information Center Project
- Saudi Hollandi Bank
- BMW Showrooms
- King Salman Science fiction
- Arab National Bank (ANB)
- Saudi Hollandi Bank (SHB)
- AlSaudi Alfransi Bank (SFB)
- AlRajhi Bank (ARB)
- Alinma Bank

JORDAN

- Raghadan Palace

- Armed Forces
- Intermediate Petrochemical Industries
- Marka Prison
- Manaseer Crushers
- Manaseer Oil and Gas Stations
- Zain Retail Stores Security System
- Soufan Group Warehouse
- Irbid Prison
- Endoomy
- Total Oil and Gas Stations
- Ghera's Group Building
- Ugarit Juice Factory and Warehouses
- IPI Intermediate Petrochemical Company
- Jordan Central Bank
- Amman Cham Palace Hotel
- Suhail Sabbagh Villa – Al Ghour
- Majed Elayyan Villa
- Majd Al Masri Villa
- Maher Al Masri Villa
- A. Majeed Zahran Villa
- Rainbow Café
- Raed Shreim Villa
- Issam Kalouti - Abdoun Villa
- Dr. Bayan Abdlehaq Family Residence
- Naser Lami Villa
- Two branches for Toyota (Lexus) branch for maintenance in Al-Bayader
- Jordan Atomic Energy Commission

KUWAIT

- ANAF Technology
- Womens College of Engineering
- Mens College of Engineering
- Kuwait Shuwaikh Power Point
- ACK university
- Al Ghunaim Trading Company
- Gulf Security Company
- Chilis® Restaurants
- The Coffee Bean and Tea Leaf Restaurants
- Ocean Basket Restaurant
- Boston Market Restaurant
- Carino's® Restaurant
- Which Wich® Restaurant
- Private Villas

- NATO
- Al Kout Mall
- Sama Educational Company

BAHRAIN

- Gulf Petrochemical Industries (GPIC)

LEBANON

- Federal Bank of Lebanon
- Schneller School
- Dar Al Aytam School - Qoubbeh
- Ukrainian Embassy
- Makassed School
- Municipality City Surveillance
- Ministry of Health
- KMC Hospital
- Abou Rejeily Residential Bldg.
- One to one hotel Dhour Choueir
- IC Elementary School
- Adidas®
- Second Cup
- GS Grand Stores
- Ibrahim Zein Jewelry
- Villagio
- Central Station - Restaurant
- Villa Hojeij
- Magic Planet - BCC
- Hôtel Dieu De France Hospital
- Villa Nader
- Residence Moukheiber
- Residence Dr. Khoury
- Azadea HQ
- Residence Sakr
- Villa Abou Mhaya
- Villa Christian Nader
- Trillium Development HQ
- Horizon Tower
- Fitness Zone Gym
- Pizza Co. Restaurant
- Living 442 Tower
- Emkan Finance Company
- Printech
- Sama Beirut Tower
- Municipality City Surveillance



Veilux Inc.

802 Greenview Dr., Suite 200
Grand Prairie, TX 75050

Tel: 800-510-6528

Fax: 214-988-2858

E-mail: sales@Veilux.com

Copyright © Veilux Inc. 2021. All rights reserved.

The specifications and descriptions of products and services contained in this catalog were correct at the time of publishing. Veilux.net reserves the right to change specifications or withdraw products without notice.